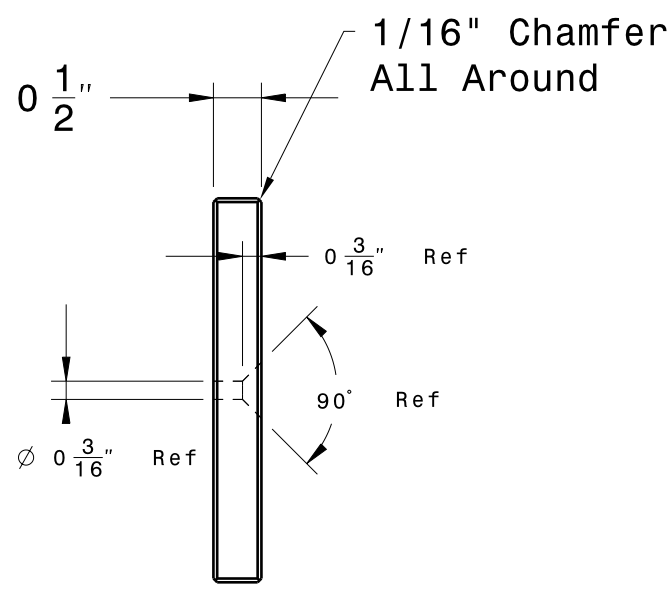
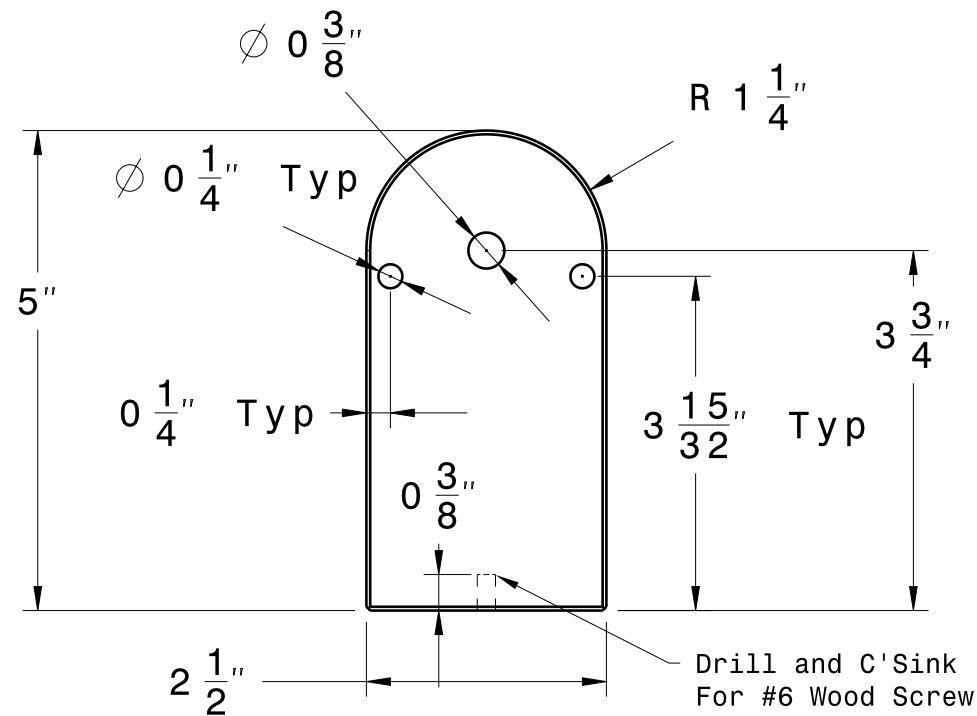


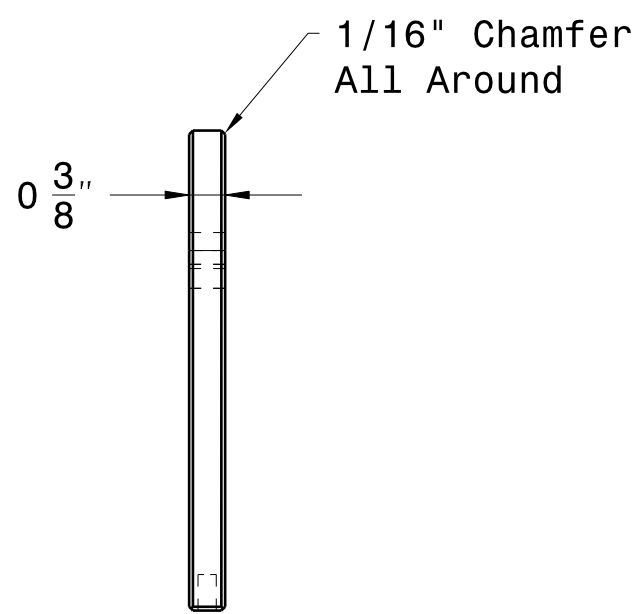
Base Front view
Scale: 1:2



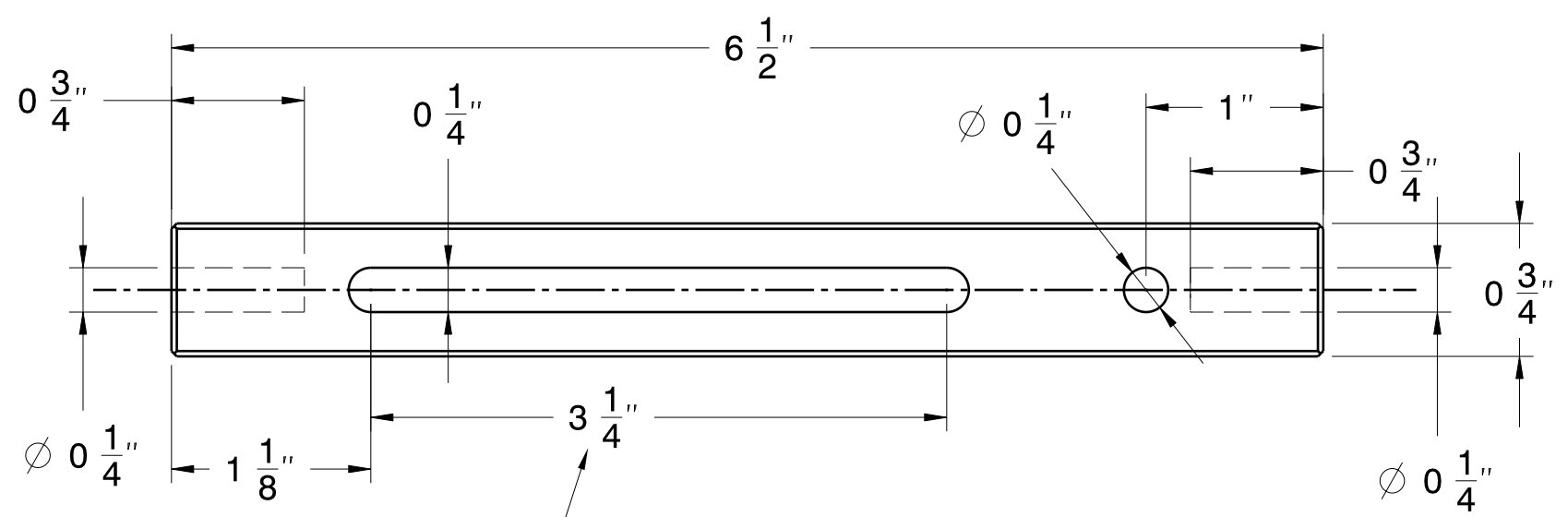
Base Right view
Scale: 1:2



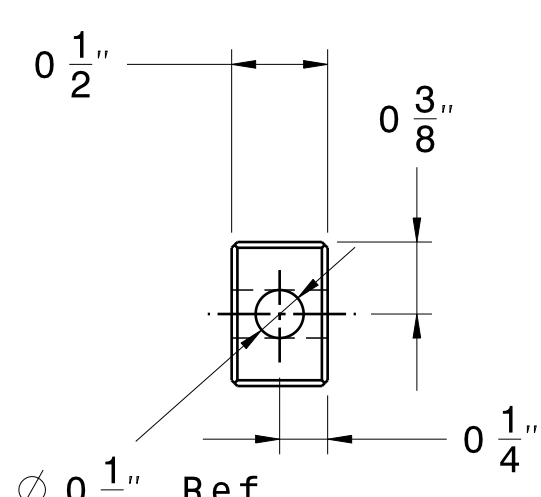
Upright Front view
Scale: 1:2



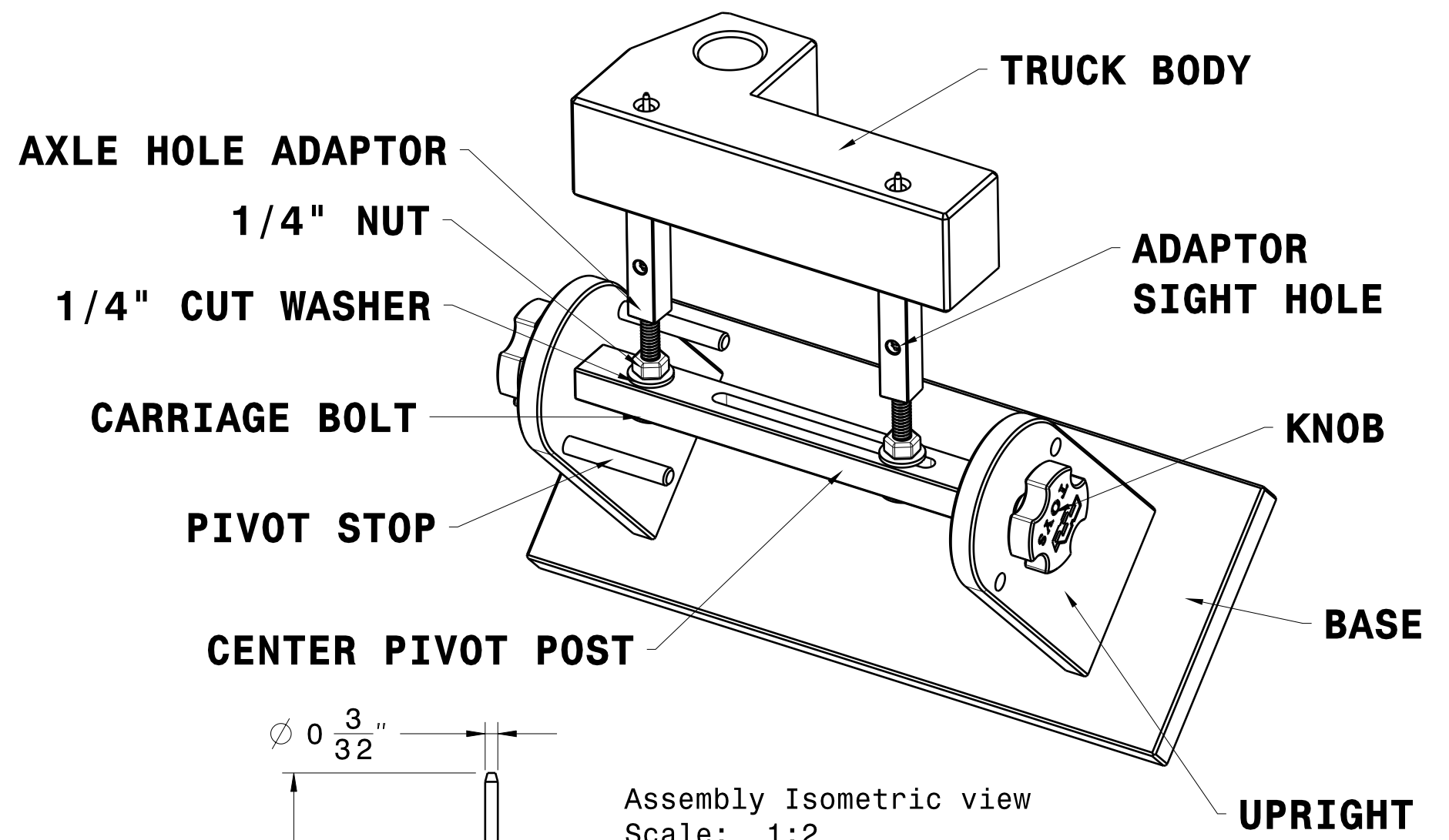
Upright Right view
Scale: 1:2



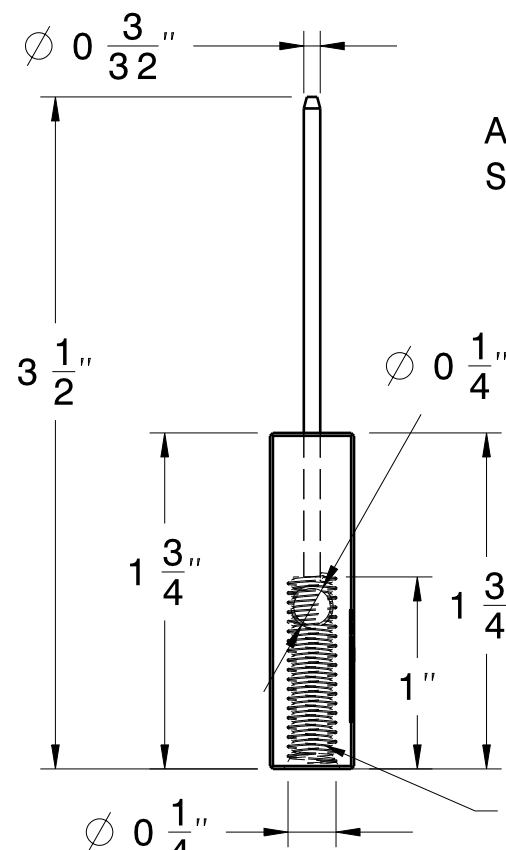
Center Pivot Post Front view
Scale: 1:1



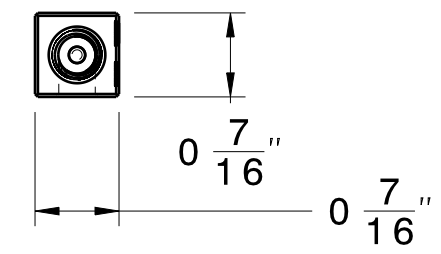
Center Pivot Post Right view
Scale: 1:1



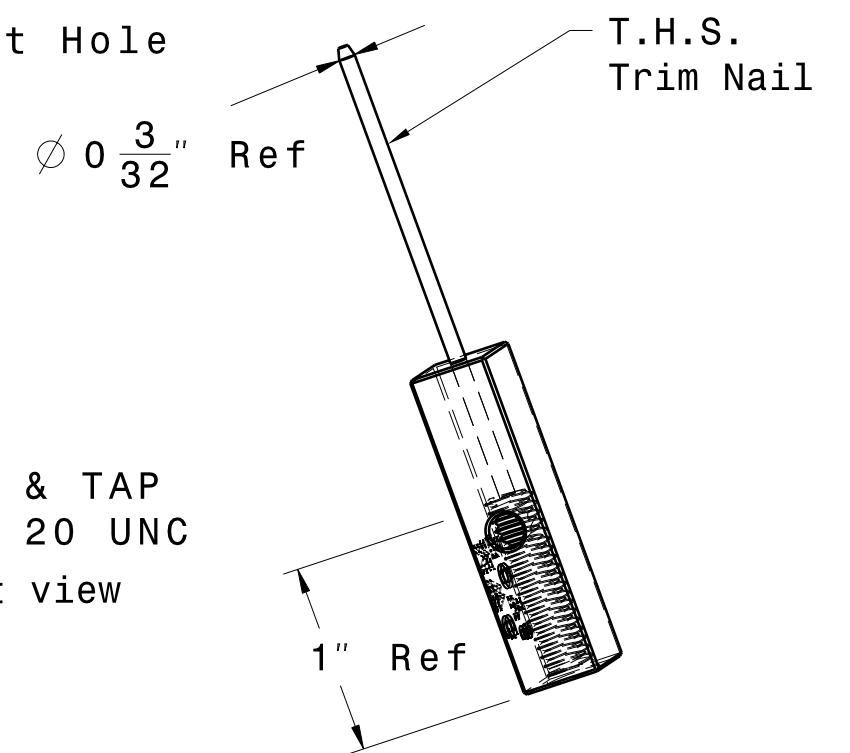
Assembly Isometric view
Scale: 1:2



Axle Hole Adaptor Front view
Scale: 1:1

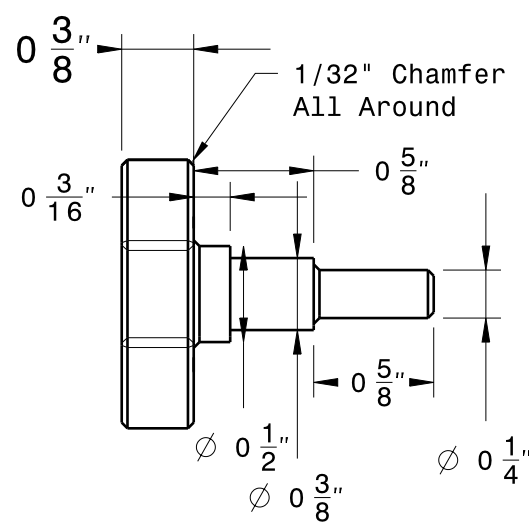


Axle Hole Adaptor Bottom view
Scale: 1:1

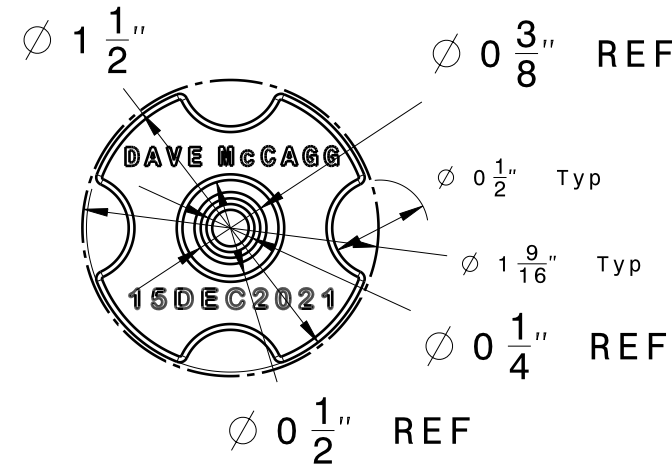


Axle Hole Adaptor Isometric view
Scale: 1:1

Designed for MWG Toy Program
This dimension may need to increase
for longer wheel base toys



Knob Front view
Scale: 1:1



Knob Right view
Scale: 1:1

MATERIAL LIST			
Component Description	Number Req'd	Size	Material
Base	1	10" x 4" x 1/2"	Birch Ply
Upright	2	5" x 2-1/2" x 3/8"	Birch Ply
Center Pivot Post	1	6-1/2" x 3/4" x 1/2"	Pine
Pivot Stop	2	1/4" Dia. x 2" Long	Birch Dowel
Axle Hole Adaptor	2	2-7/8" x 7/16" Square	Plastic
Knob	2	1-1/2" Dia x 1-3/8"	Plastic
Carriage Bolt	2	1/4" Dia. x 1-1/2" Long	Steel
Cut Washer	2	1/4"	Steel
1/4 x 20 Nut	2	1/4" x 20	Steel
T. H. S. Trim Nail	2	2-1/2" Long	Steel

Should the user wish to increase throughput,
Multiple fixtures may be constructed
Opt: increase length of Center Pivot Post and Base

This drawing is our property.
It can't be reproduced
or communicated without
our written agreement.

Ken Wolf Design

DRAWN BY
D R McCagg
DATE
1MAR2021
CHECKED BY
Chuck Andrews
DATE
21MAY2021
DESIGNED BY
D R McCagg
DATE
1MAR2021

DRAWING TITLE
Toy Body Painting Fixture
SIZE
C
DRAWING NUMBER
Toy_Body_Painting_Fixture_2-17-21
REV
B
SCALE: As Shown
WEIGHT (kg), 243.08
SHEET 1/1