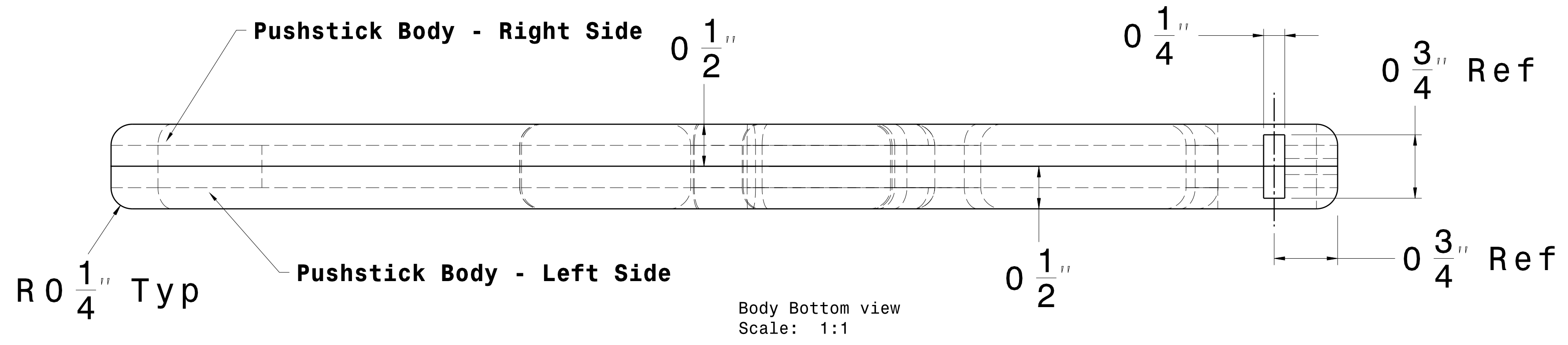
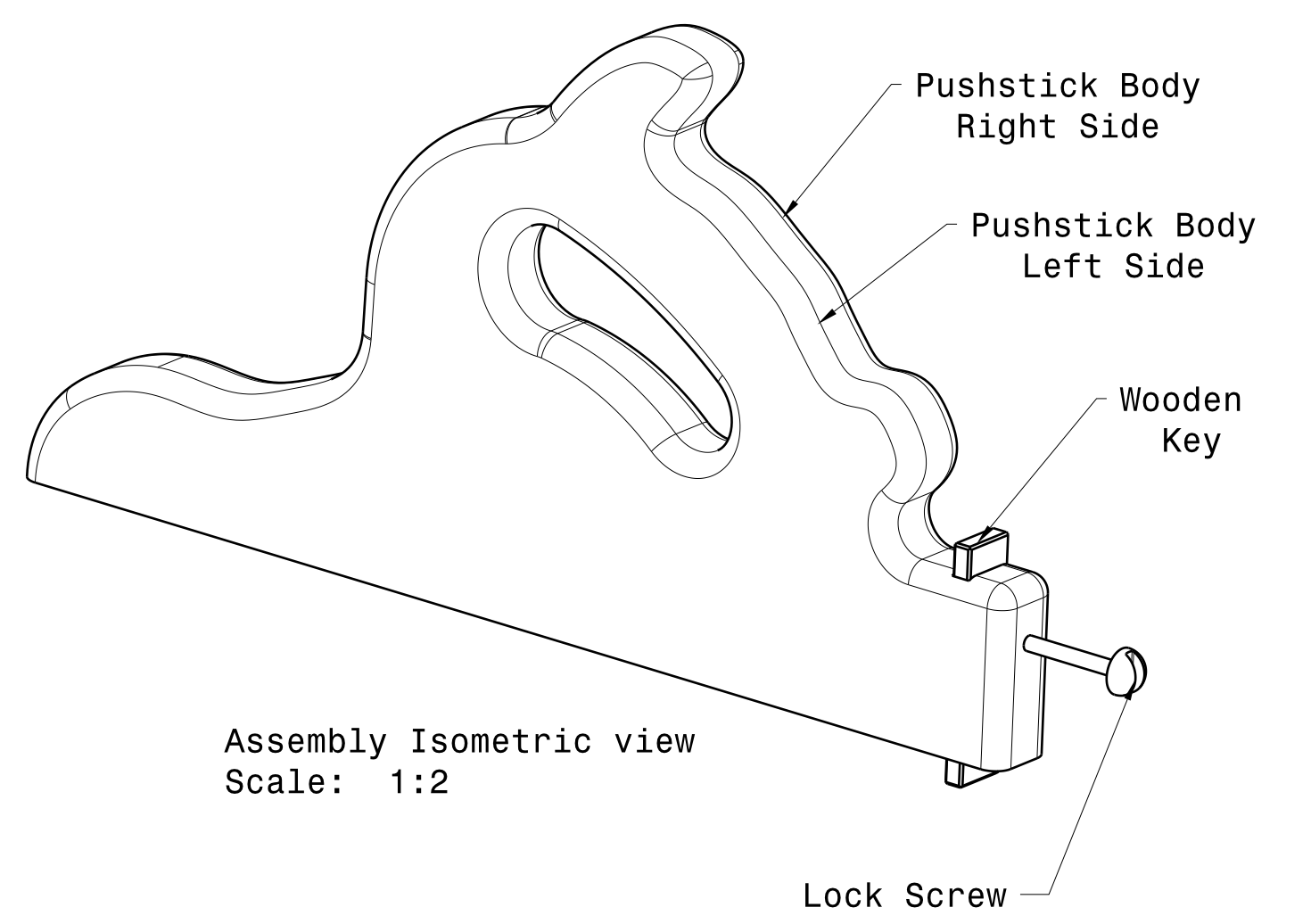


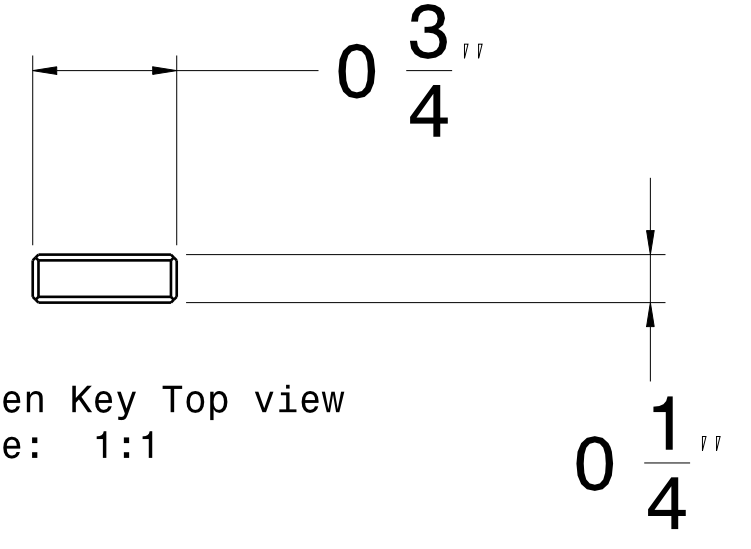
Body Front view
Scale: 1:1



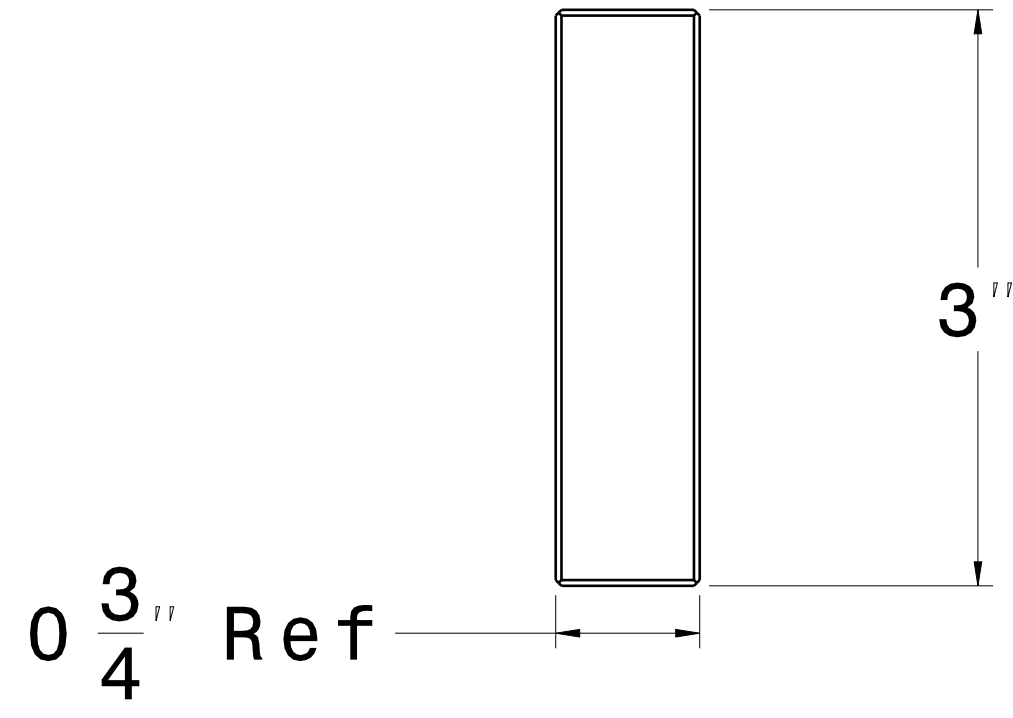
Body Bottom view
Scale: 1:1



Assembly Isometric view
Scale: 1:2



Wooden Key Top view
Scale: 1:1



Wooden Key Front view
Scale: 1:1

Push Stick Pattern

Make from 2 pieces of 1/2" plywood cut in the shape of pattern shown in Body Front View above
 Cut grooves 1/4" wide and 3/8" deep on both inner faces in location shown
 Insert 1/4" x 3/4" waxed wooden key in grooves before gluing together to assure alignment
 Glue the two inner faces together (with waxed key in place) and clamp
 Drill and thread locking screw in center of piece in location shown after pieces are glue / dried
 Round over all corners except bottom with 1/4" roundover bit in router or by sanding
 Non-skid pad on bottom can be purchased from Lee Valley (Part Number 88K95.05 or 88K96.06)

MATERIAL LIST			
Component Description	Number Req'd	Size	Material
Pushstick Body - Right	1	7-3/4" x 14-1/2" x 1/2"	Baltic Birch Plywood
Pushstick Body - Left	1	7-3/4" x 14-1/2" x 1/2"	Baltic Birch Plywood
Wooden Key	1	3" X 1/4" X 3/4"	Pine
Lock Screw	1	10 - 24 DIA X 2"	CRS

This drawing is our property. It can't be reproduced or communicated without our written agreement.		KEN WOLF DESIGN		
DRAWN BY D.R. McCagg		DRAWING TITLE MWG PUSHSTICK		
CHECKED BY XXX	DATE 1NOV2021	SIZE D	DRAWING NUMBER Tablesaw_Pushstick_11-1-21	REV X
DESIGNED BY D.R. McCagg	DATE 1NOV2021	SCALE As Shown	WEIGHT (kg) 7.02	SHEET 1/1