



# MICHIGAN WOODWORKER

michiganwoodworkersguild.com



Michigan Woodworkers' Guild (est. 1981) April 2024 Vol. 45 No. 4

When / Where:

**SUNDAY, APRIL 14, 2024**

(Socializing Starts at 1:00 PM, Business Meeting Starts at 2:00 PM)

**In-Person Meeting:**

**Tool Design**

by **Jammie from Rockler**

Meeting Coordinated by: Ron Ross



**IN-PERSON MEETING AT:**  
**Livonia Senior Center**

**APRIL:**

Member Meeting – April 14<sup>th</sup> 1:00 - 4:00 PM  
**Jammie** from Rockler, Novi will discuss “Tool Design”. Coordinated by **Ron Ross**.

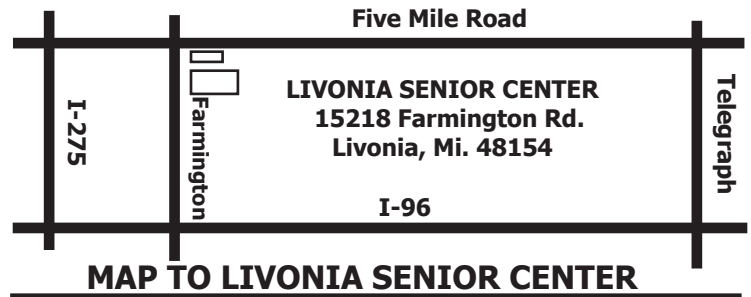
2024 MWG Seminar – April 27<sup>th</sup> 8:30 AM – 4:00 PM - Woodworking professional **Tom McLaughlin** will present “The Art of Chairmaking”. Coordinated by **Ragnar Bergethon**

**MAY:**

Coordinated by MWG President **Jerry Romito**, phenomenal woodworker **Gary Rogowski** will demonstrate many inspiring techniques to “Fix Mistakes” which we all encounter. Join us Sunday, May 19<sup>th</sup> at 1:00 PM at the Livonia Senior Center.

**JUNE:**

Join your fellow MWG members in a one of a kind tour of the exclusive Ford Fairlane estate. Coordinate by **Dan Holowicki**, our June 15<sup>th</sup> Field trip will start at 10:00 AM. Due to logistics, the tour is restricted to 30 people so sign up early with Dan at the April meeting.



**MAP TO LIVONIA SENIOR CENTER**  
**April MWG Member Meeting**

**Tool Design**  
by **Jammie from Rockler**

**April 14<sup>th</sup>**

**Jammie**, from Rockler in Novi, will demonstrate two of their tools to flatten wood slabs or cutting boards as well as other apparatus to enhance your next project. See above for meeting time coordinated by **Ron Ross**.

**2024 MWG Seminar**

**The Art of Chairmaking**  
by **Tom McLaughlin**

**April 27<sup>th</sup>**

Renowned woodworking professional, **Tom McLaughlin** will give a live demonstration of chair construction in the MWG 2024 daylong seminar. Starts at 8:30 AM at Livonia Senior Center. See flier on Page 8 and sign up early with **Jerry Romito**.



## President's Corner

By Jerry Romito



April 2024

### Something Different to Show You

One of our observant members, **Kevin Goulet**, was browsing on Facebook and ran across the following post, which he then shared with me. It is a short article written by **Jay Penfil**, the President of the Detroit Area Woodturners (DAW). He describes a program whereby yet another turning guild turns bowls and then donates them to a charity organization. This type of program is of course familiar to all of our toy

builders, so I thought that you might be interested in reading it. See the article next page.

Some of you may know **Jay Penfil**, since a few of our members are also members of the DAW, and vice versa. I have had several conversations with him recently, and find that he is quite interested in forming collaborations with all types of woodworking guilds in the state. He is a past member of MWG, and says that plans to rejoin us soon.

### Sign Up for Tom McLaughlin on April 27

You still have time to sign up for the Tom McLaughlin April 27 seminar on "The Art of Chairmaking". If you have not done so yet, please see the end of this newsletter for a mail-in registration form.

### Jerry Romito

**GLENN WING  
POWER TOOLS**

33656 Woodward Ave.  
Birmingham, MI 48009  
(248) 644-0444  
(248) 644-5790 Fax  
(800) 821-5177 (US)  
(800) 448-1572 (MI)

Jeff Wilmot

**TREE-PURPOSED**  
DETROIT

**CUSTOM WOODWORK & MILLING**  
Live Edge Slabs & Urban Lumber  
Barn Wood & Salvaged Wood  
Firewood

**JASON COVIAN**  
Office (734) 751-6746  
Cell (734) 658-2840  
[TREEPURPOSED.COM](http://TREEPURPOSED.COM)

**MARSH POWER TOOLS**  
SALES AND AUTHORIZED FACTORY SERVICE

**20579 Middlebelt  
Livonia, MI 48152  
(248) 476-7744**

**7187 Grand River Ave.  
Brighton, MI 48114  
(810) 220-1122**

**Fax: (248) 476-1090**



**ODETTE FERGUSON**  
SALES REPRESENTATIVE  
E-mail: [odette@sawspec.com](mailto:odette@sawspec.com)



10555 Shook Rd. P.O. Box 74438  
Romulus, Michigan 48174-0438  
[www.sawspec.com](http://www.sawspec.com)

Your single source for all  
your sawing needs...from  
coolants to machinery

Voice  
800-SAW-SPEC  
800-729-7732  
734-941-2824  
Cell  
734-740-1691  
Fax  
734-941-2883

Member of  
Industrial Distributors Association  
International Saw & Knife Association



## Detroit Area Woodturners

Jay S. Penfil · 2h · 🌐



Our friends at Northwestern Michigan Woodturners participate each year in a non-profit program called, "Empty Bowls". You make utilitarian bowls, they are donated to an organization that then sells them and the proceeds are used to feed those who can't feed themselves.

Last year they donated approximately 550 bowls. They are striving to donate more this year.

If anyone seeing this post would like to donate to this awesome program, please reach out to me, or directly to [Gary Perkins](#) (President of Northwestern Michigan Woodturners). Just click on his name to connect with him.

Thank you,

Jay





MWG Meeting Review  
Nesting Chair  
Livonia MI, 10 March 2024

Our 14 March 2024 Livonia meeting featured Ragnar Bergethon instructing on building the Nesting Chair, a design with comfortable curved seat and back assemblies, which when separated can nest inside one another for easy transportation and storage. Berg reported that this clever yet simple design has shown up in several versions over the years. It is fun to build, light weight, compact and very comfortable. Popular



**Berg's Nesting Chair**

designs and building approaches include:

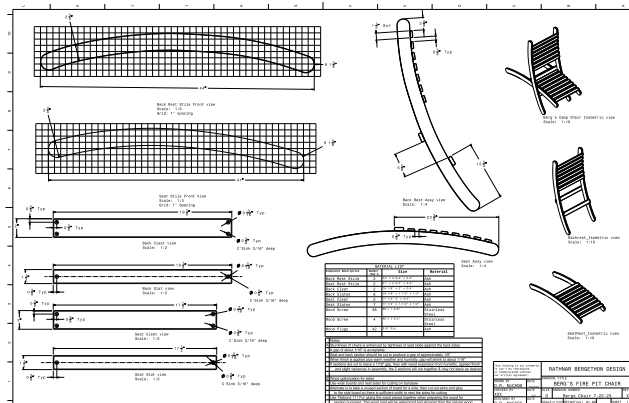
- Woodcraft.com – Cross-Brace Chair by Scott Phillips (<https://www.woodcraft.com/blogs/cabinetry-furniture-making/cross-brace-chair>)
- YouTube's Jay Bates - Portable Nesting Chair with Full Size Template – 327 (<https://www.youtube.com/watch?v=EuT-X18gX-4>)
- YouTube's Brett's Basement Workshop (Brett Miller) - Glamorous Camping Chairs, a modified Jay Bates design. This video shows an approach to adding arms to the chair. (<https://www.youtube.com/watch?v=sTQf1uoPCHE>), and
- Rockler.com – Portable Outdoor Chair Plan January 2021 (<https://www.rockler.com/rockler-portable-outdoor-chair-plan-with-templates>)

Berg's design is primarily adapted from the Rockler Portable Outdoor Chair.

You can find Berg's Camp Chair drawings on the MWG website with the following link:

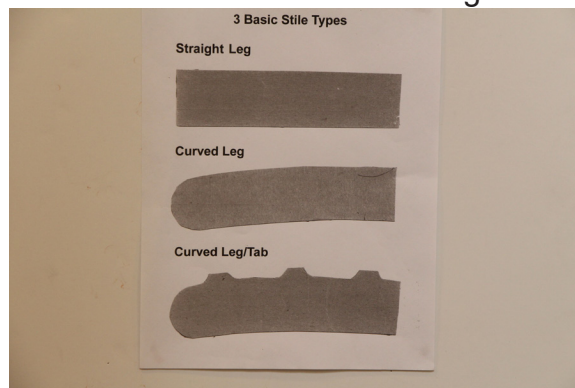
[https://michiganwoodworkersguild.com/wp-content/uploads/designs/Bergs\\_Camp\\_Chair\\_2-16-24.pdf](https://michiganwoodworkersguild.com/wp-content/uploads/designs/Bergs_Camp_Chair_2-16-24.pdf)

He shared how he builds the chair, including the use of jigs and other aids he devised to make the building more efficient. He gave his recommendations on best choice of wood, and reviewed the availability of alternative plans and design features for our use (above). Our hardworking design staff used their CAD skills to make a great blue print of Berg's plan, which he has posted on our website. (See Link below).

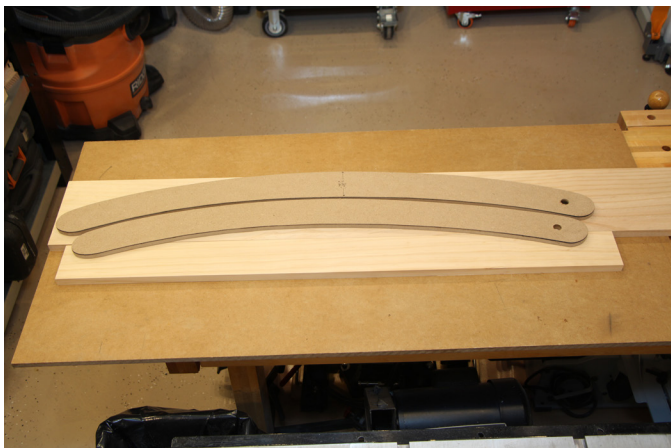


**Berg's Camp Chair Drawing**

The blue print shows a scaled drawing of the stiles. For those of us who cannot print large drawings, Berg provides a segmented full-size plan of the two types of stiles. Each segment uses standard paper (8 1/2" x 11") with overlapping views which after printing can be taped together to make the full-sized templates. He has included reference marks on each segment to enable correct overlapping during the taping process. These segmented full-size drawings will be available as pdf files on the website. Anyone wishing to build this chair should download the drawing file which in-



**Slat Design Alternatives**



**Berg's Stiles layout**

cludes the two stile pdfs and print full-size sheets to make templates for making the actual stiles.

The chair itself is composed of two assemblies, one named "backrest" and the other "seat." The backrest assembly is composed of two parallel curved backrest stiles joined by seven perpendicular back slats in its "upper half" (where the users back will reside) and by two back cleats in the lower half which serve to align and secure the seat assembly when joined with the back assembly to make the assembled chair. The seat assembly is similarly composed of two shorter curved stiles, joined by eight perpendicular slats (the actual "seat" of the chair), along with a seat cleat and a lower seat stretcher, the latter to give the seat assembly rigidity in its lower half. In actual use, the narrower and shorter seat assembly slides through the back assembly between the two back cleats. It is held in place by the seat cleat under the weight of the seat assembly and the user. The positioning of the



**Berg Flush Trimming Stiles at Router Table**

backrest cleats determines the angle between the seat and the backrest, and so the height of the seat above the ground. The design allows for adjustment of the angle and height to meet the comfort preferences of the user. This all becomes clearer when one views the nearby photo of an assembled chair.

For storage and transport the seat assembly is withdrawn from the backrest assembly, rotated, and "nested" in the back assembly, hence the name of the chair. This makes for compact storage and easy transportation handling.



**Berg Marking for Cleat Locations**

Berg's Presentation Outline document contains detailed instructions for making the parts, including selecting screws, positioning, drilling and counter-sinking the installation holes, and making the associated wood plugs. It also reviews the sequence of construction steps. Those members who desire to build the chair can email Berg and request a copy of this document. His email address can be found in the Membership Roster after logging in as a guild member. <https://michiganwoodworkersguild.com/roster/>

He shapes each pair of stiles as a single operation, (the stiles double sided taped or otherwise attached together with their respective template) using a suitably long flush trim bearing bit. He appears to use an Infinity Mega Flush Trim Compression Router Bit, but any solid carbide spiral flush trim compression bit would suffice.

<https://infinitytools.com/collections/mega-flush-trim-router-bits>



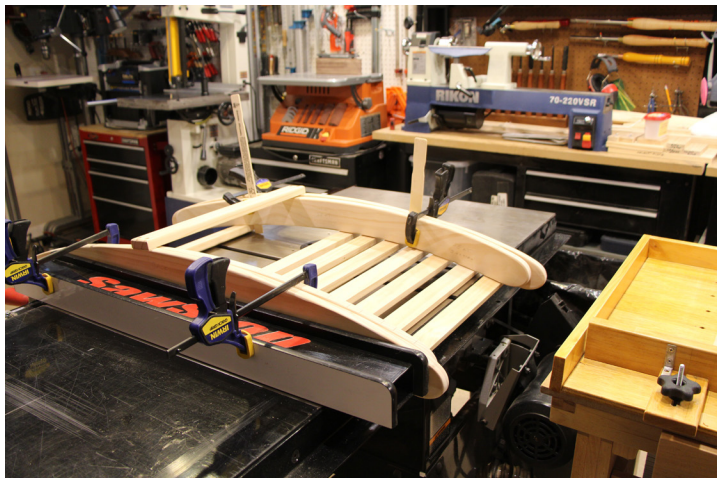
He makes the 3 cleats, 15 slats, and single stretcher to size, then uses a 1/8 in. round-over bit on all edges, including the outer ends. He recommends using a coping sled when rounding the ends. The stretcher does not have rounded ends because it is abutted flat to the insides of the stiles. Berg then marks the locations of the slats, cleats and stretcher on the stiles, and uses a rasp or file to flatten the edges where the slats and cleats will contact the stiles to improve firmness and increase the glue area. Before assem-



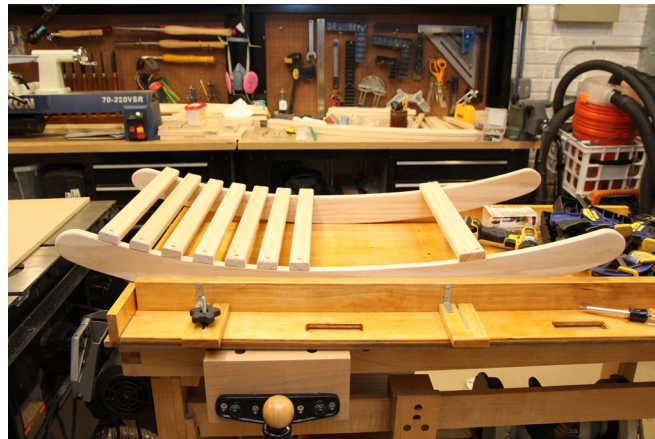
**Backrest Assembly on Tablesaw**

bly, he pre-drills and counter-bores (for wood plugs) all the through holes at the locations specified in the plans for the recommended exterior stainless steel screws.

Berg includes detailed instructions for efficient and



**Seat Assembly on Tablesaw**



**Backrest Assembly on Jig**

precise assembly of all the myriad parts in both assemblies making up the chair. He suggests two parts-alignment approaches (Table Saw or Jig). If one plans to build only a few chairs then one can use a table saw with its rip fence and get good results. Alternatively, if one wants to make many chairs, possibly even several sets for family members or for sale, Berg showed a custom assembly jig. For both methods he uses various spacer parts to gain precise uniformity with little effort. For the table saw method, one clamps one stile to the rip fence then uses a spacer to set the matching stile on its own vertical brace. For the jig method, one stile is clamped to one side of the jig and the other to a second interior adjustable side of the jig. In either method there is a proper sequence to installation of the slats and cleats, explained in detail in Berg's presentation outline. The stretcher is installed last in both instances.



**Seat Slat Spacing**



**Berg Applying Epoxy to Feet**

For finishing of the chair Berg first coats the feet with clear epoxy to protect them from the elements (wick-ing of rain water or dew) and wayward rocks or sand. He then sands all surfaces with 320 grit sandpaper. Paint then offers the best protection, but if one de-sires to retain any attractive wood color and grain he recommends spar varnish, tung oil, or teak oil with a preference for the latter due to its good UV protec-tion, water resistance, and ease of refinishing. Any of these finishes can be applied with spray gun, brush or wipe on (preferred by Berg). He applies three coats of finish then sands with 600 grit paper.

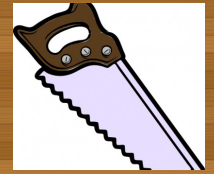
Berg was very generous in offering the completed demonstration chair for raffle at the meeting, and donating the raffle proceeds to the Guild to support the toy program. MWG Member **Richard Herbert** was the lucky winner and is now the proud owner of Berg's Camp Chair!

We thank Ragnar for sharing his project and for pro-viding excellent detailed drawings and instructions. Thanks also is due to **Kevin Goulet** for the video pro-jection of the presentation, to **Dan Holowicki** for the photographs, and to the MWG design staff for mak-ing the chair detailed blue print and loading plans on the website.

You can find the MWG **Tom McLaughlin** sign-up flier on the MWG website with the following link:  
[https://michiganwoodworkersguild.com/wp-content/uploads/Seminars/Tom-McLaughlin-Flyer-GJR-final\\_Rev5\\_2-3-24.pdf](https://michiganwoodworkersguild.com/wp-content/uploads/Seminars/Tom-McLaughlin-Flyer-GJR-final_Rev5_2-3-24.pdf)



**MWG  
2024  
Seminar**



Nationally known woodworker, **Tom McLaughlin** will present *The Art of Chairmaking* for our **April 27th 2024** guild daylong (8:30 am - 4:00 PM) seminar.

Tom will introduce and attempt to simplify the art of fine chairmaking which is considered by most to be the most challenging of woodworking projects. While he will include inspirational examples from the great designs of the past through slide discussions, there will be plenty of practical examples and demonstra-tions of the approach and process to making great chairs.

More information and to sign-up by filling out the MWG flier found on our website with the link shown below. Just download the flyer, remove the bottom application, and send it along with payment to the **Jerry Romito**.





CHILDREN'S  
HOSPITAL  
MWG TOY PROGRAM

**From Dan and Ron**

## News from the Toy and Box Committee

And The Winners Are

After a too busy November 2023 meeting, a weather cancelled January 2024 meeting and a shortened February 2024 meeting we finally had our annual toy and box contest. First off a big thank you to the eight members who submitted entries. They are in no particular order; **Larry Last, Steve Vaertan, Bill Dimico, Dave Nordstrum, Charles Reavis, Jim Kudej, Jim Kramer, and Dan Holowicki.** An esteemed panel of 3 judges from the BoD perused all the entries and has given their final decisions.

### Toy Categories

**Best Overall Design – Bill Dimico – tow truck**



**Bill Damico's Tow Truck**

**Michigan Naturals**  
DECORATIVE CABINET HARDWARE  
www.MichiganNaturals.net

Ann Ivory  
313-506-1963

**Best Overall Natural Finish – Steve Vaertan – walnut sports car**



**Steve Vaertan's Race Car**

**Best Overall Painted Finish – Charles Reavis – pink Barbie car**



**Charles Reavis's Barbie Car**

### Box Categories

**Best Overall Design – Dave Nordstrum – memory box w/3D flower**



**Dave Nordstrum's Flower Memory Box**





**Best Overall Finish – Dan Holowicki – cherry memory box**



**Dan Holowicki's Cherry Memory Box**

Congrats to all the winners, their creativity and execution of design and finishes. Each of the winners received a \$20 Rockler gift certificate, proudly donated by our friends at the Novi Rockler store. All the entries will be packaged up and delivered to Children's Hospital sometime this year. We hope to continue this contest and look forward to seeing the creativity and execution of our member toy and box makers.

As has always been the policy, the Guild will provide standard wheels (1", 1 1/4" or 1 1/2" dia) along with the new treaded wheels, 1/2" OD nylon washers and 1/4" dia. wheel pegs free of charge to any member who wishes to make toys for this program. We do have a fair supply of the treaded wheels at this time and should they be a big hit, we will arrange to have more in the years to come. Any of these items can be obtained by contacting Ron or Dan.

The Guild still has an inventory of non-standard wheels and other toy parts that have been recently categorized. There has been a good response to these non-standard items and once they are gone, they will not be replaced.

- 1 3/4", 2", 2 1/4", 2 1/2", 2 3/4" and 3" diameter standard style wheels
- 2", 2 1/4", 2 1/2" and 2 3/4" diameter treaded tire style wheels
- 2" and 2 3/4" diameter wagon style wheels

- 1 1/4", 1 1/2" and 2 1/4" diameter flanged style train wheels
- Wood shapes such as acorns, beads, balls, caps and discs
- Large and small shaker style pegs
- Three sizes of wood peg people
- Steam engine/steam train smokestacks

We do bring a small amount of select items from this stockpile to Guild meetings on a regular basis. However, if you have a specific need, please contact Ron or Dan for the amount and to arrange delivery. Once again, a great big thank-you to those who contributed to last year's success.

For further information on our toy/box program or request wheels and axels, please contact

**Ron** - 734- 812-5531 - [ross1508@gmail.com](mailto:ross1508@gmail.com)

**Dan** - 313-702-5836 - [dan56laura@att.net](mailto:dan56laura@att.net)



- What do you call a woodworker who always wants to help others?  
**A wood samaritan**
- Why do banks hate woodworkers?  
**Because all they want to do is open up a shavings account.**
- What sound do dogs make when they catch a stick?  
**Bark bark.**

These phrases are provided purely for your humorous enjoyment. Feel free to send your favorite woodworking pun to the MWG Newsletter Editor for possible future publication.



## MWG June 2024 Field Trip / Tour

### Fair Lane – The Home of Henry Ford



Fair Lane Mansion

On June 15<sup>th</sup> 2024 at 10 am, MWG members will have a chance to tour the Fair Lane mansion built for **Henry Ford** and his wife **Clara**. This tour will last approximately 2 hours and will feature many of the areas of the mansion currently under renovation. As of this time Fair Lane is currently closed to public tours (since 2010). There is a \$10 fee for the tour and we are limited to 30 individuals.

A bit of history about Fair Lane.

The 31,000 square foot, 56 room house was built between 1913 and 1915 in the Prairie Style. The original estate consisted of 1300 acres bordering the Rouge River in Dearborn, MI. **Frank Lloyd Wright** was commissioned by Henry and Clara to design the mansion. However, with his departure to Europe, one of his first female architecture students, **Marion Mahoney Griffin** was placed in charge of seeing to the final designs. After some disputes with interpretation, architects **William H. Van Tine** and later **Joseph Nathaniel French** were brought on board to see the project through to completion. The exterior of the mansion is limestone, with a slate roof. The interior rooms of the house feature many intricate wood carvings, exotic wood paneling and other de-

tails. Other structures on the property included a powerhouse with an underground tunnel to the main house, garage, horse stables, boathouse, children's playhouse and many gardens designed by Chicago architect **Jens Jensen**. The Ford's lived there until their passing in 1947 (Henry) and 1950 (Clara). In 1957, the estate was donated to the University of Michigan for the establishment of a new Dearborn campus. In 2010, public tours were ended to begin a multi-million dollar renovation and re-imagining of the home and grounds involving work by world class artisans and specialists. Many major upgrades to the estate's infrastructure continue today. Certain private events are allowed, however. In 2013, the stewardship of the estate was transferred to the Historic Ford Estates, the same non-profit group that operates the lakeside Edsel and Eleanor Ford House in Grosse Pointe, MI. The Ford Family continues with financial help to both estates. Fair Lane is a National Historic Landmark and is preserved as such.



Fair Lane from U of M Grounds

Fair Lane is located on the campus of The University of Michigan – Dearborn and is accessed from Hubbard Drive. The address is 1 Fair Lane Drive, Dearborn MI. In addition to the mansion tour, the grounds surrounding the mansion are open to the public and can be viewed at your leisure.



Rouge River on U of M Grounds

If you are interested in the tour, you can call **Dan Holowicki** at (313) 702-5836. Dan will also be passing around a sign-up sheet during the April and May meetings. The June 15<sup>th</sup> 2024 tour starts at **10:00 AM** and costs \$10. We are limited to 30 on a first come basis. Photography is allowed but no flash. The registration will be closed after the May meeting; payment will be due at that time.



Michigan Woodworker's Guild yearly dues are now payable.

Feel free to get on-top of the renewal process by paying your \$25 yearly dues Early and Often.

Thank you to everyone who responded to the email message and made payments through the MWG website as well as by sending your dues payment to the membership chair.

Note: A membership renewal form can be found on the website dropdown menu under "Membership - Payment/Renewals"



## MWG RESOURCES



### Tools For Veterans

**Justin Billard**, founder of *Tools For Veterans* (TFV), gave an inspiring presentation to the guild at our last meeting. *Tools For Veterans* is in its 3rd year and growing rapidly. They accept all tools and related equipment, regardless of condition. Their motto:

**"Any Tool, Any Condition"**

The 16 member staff of veterans refurbishes these donations for sale through their store located in the Tanger Outlet mall: **1475 N. Burkhardt Rd, Howel, Michigan**. Every calendar quarter, *Tools For Veterans* uses the profits from the store to make financial contributions to veteran organizations.

**Ron Ross, Dave McCagg and Ragnar Bergethon** recently met with Justin to review his operations, to donate items, such as a Vintage 20" Scroll Saw, a vintage Shopsmith, a chipper shredder as well as to discuss how our guild and *Tools For Veterans* can support each other.

Justin is so impressed with our guild, that he is providing certain power tools for the upcoming **Tom McLaughlin** program. Learn more about *Tools For Veterans* by visiting their website at:

[www.toolsforveterans.com](http://www.toolsforveterans.com).

One can also call TFV at (810) 510-4123.





**The Michigan  
Woodworkers Guild**  
Proudly Presents  
**Tom McLaughlin**  
On Saturday, April 27, 2024  
For An All-Day Seminar on



Tom McLaughlin will present *The Art of Chairmaking*. If you've yet to experience his teaching style, you are in for a treat as he clearly delivers concepts for those at various levels of expertise to understand, with professional skill and a disarming humor.

Tom will introduce and attempt to simplify the art of fine chairmaking which is considered by most to be the most challenging of woodworking projects. While he will include inspirational examples from the great designs of the past through slide discussions, there will be plenty of practical examples and demonstrations of the approach and process to making great chairs.

The presentation will begin with an explanation of the fundamentals, using as an example a classic mortise and tenon Craftsman style chair. Then Tom will show how the principles involved in building this chair extend to the more curvilinear Queen Anne style. Finally, he will explore chairmaking design and construction in the style of one of a modern-day masterpiece, the Hans Wegner Classic (round) Chair.

Tom can be seen on his *Epic Woodworking* website ([epicwoodworking.com](http://epicwoodworking.com)), on his free weekly livestream called *Shop Night Live* on YouTube, as a frequent contributor to *Fine Woodworking Magazine*, and as the host of *Classic Woodworking* on PBS TV.

**Date:** Saturday, April 27, 2024  
**Time:** 8:30 am -- 4:00 pm  
**Sign in:** 8:30-9:00 - Coffee & snacks  
**Box lunch included:** 12:00 - 1:00 pm  
**Location:** Livonia Senior Center  
15218 Farmington Road



Please prepay by mail to reserve your seat and lunch. Mail your check with this form to Jerry Romito at 1995 Wales Drive, Rochester Hills, MI 48306. (Questions call: 248-891-5331)

Make the check payable to: Michigan Woodworkers Guild. **Deadline April 14, 2024**

Reserve soon, as seating is limited.

Name: \_\_\_\_\_  
Address: \_\_\_\_\_  
City, St, Zip: \_\_\_\_\_  
Phone: \_\_\_\_\_  
Email: \_\_\_\_\_

Cost

- Member: \$35  
 Non-Member: \$45  
(includes 1-yr. paid  
\$25 membership)

You can find the MWG **Tom McLaughlin** sign-up flier on the MWG website with the following link:  
[https://michiganwoodworkersguild.com/wp-content/uploads/Seminars/Tom-McLaughlin-Flyer-GJR-final\\_Rev5\\_2-3-24.pdf](https://michiganwoodworkersguild.com/wp-content/uploads/Seminars/Tom-McLaughlin-Flyer-GJR-final_Rev5_2-3-24.pdf)



Donate "Any Tool, Any Condition"

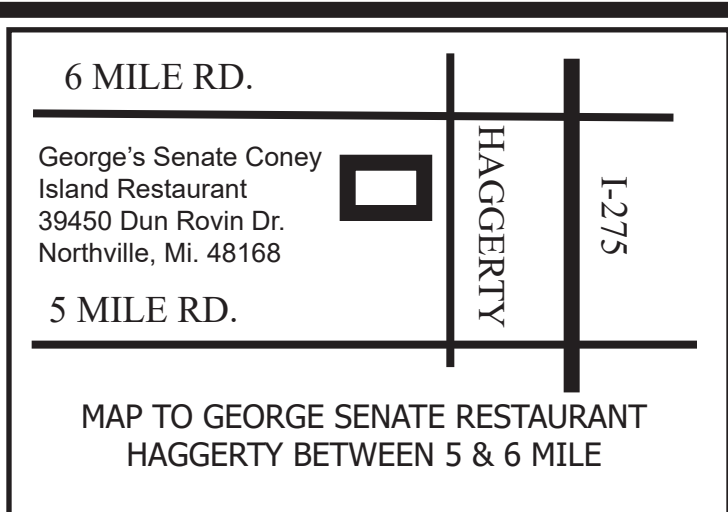
For membership information contact

Dave McCagg at: [d2mccagg@provide.net](mailto:d2mccagg@provide.net)

For name tags, sign up with Ed Stuckey at a regular meeting.

Executive Board Members / Committee Chairs

Jerry Romito.....	President.....	248-475-5976
Dan Holowicki.....	Vice President.....	734-283-9898
Ed Stuckey.....	Treasurer.....	313-345-3671
John Dolinsky.....	Secretary.....	734-945-6461
Dan Holowicki.....	Officer at Large.....	734-283-9898
Tony Gigliotti .....	Officer at Large .....	248-853-8349
Bill Gayde .....	Officer at Large .....	248-859-3949
Ron Ross.....	Officer at Large.....	734-812-5531
Rich Herbert.....	Officer at Large.....	248-628-0644
Ragnar Bergethon...	Officer at Large.....	248-608-8436
Ken Wolf.....	Officer at Large.....	734-981-3423
Dave McCagg.....	Officer at Large.....	734-482-6764
Ragnar Bergethon..	Website .....	248-608-8436
Dave McCagg.....	Newsletter Editor.....	734-482-6764
Dave McCagg.....	Membership.....	734-482-6764
Larry Last..	Programs/Website Calendar....	248-207-9386
Bob Mills.....	Mentoring.....	248-535-6718
Kevin Goulet .....	Camera Chair .....	248-672-5341
Fred Ball....	Web Site Calendar (Backup).....	248-681-3108
Ron Ross.....	Toy Program.....	734-812-5531
Kevin Goulet.....	Officer at Large.....	248-672-5341
Kevin Goulet.....	Food Coordinator.....	248-672-5341



Next MWG Luncheon: (Coordinated by TBD)  
**Thursday, 25 APRIL 2024 at 10:16 AM**