



MICHIGAN WOODWORKER

michiganwoodworkersguild.com



Michigan Woodworkers' Guild (est. 1981) April 2026 Vol. 47 No. 4

When / Where:

SUNDAY, APRIL 12, 2026

(Socializing Starts at 1:00 PM , Business meeting Starts at 2:00 PM)

Livonia Senior Wellness Center, Livonia, MI

Note: **NEW MEETING PLACE AND LOCATION**

In-Person Meeting:

Pen Turning

by Ragnar Bergethon, Steve Gross,
Ron Ross and Duane Kimmel

Meeting Coordinated by: **Larry Last**



IN-PERSON MEETING AT:
Livonia Senior Wellness Center

April:

MWG members, **Ragnar Bergethon, Steve Gross, Duane Kimmel, and Ron Ross** will demonstrate how to make custom wooden pens which make excellent gifts for family and friends. Coordinated by **Larry Last**, join us at 2:00 PM on April 12th

May:

Professional Cabinet Maker, **Jim Demers** will discuss his experiences and three decades long business perspective. **Larry Last** is coordinating this **17MAY2026** discussion where socializing starts at **1:00 PM**, business meeting at 2:00 PM.

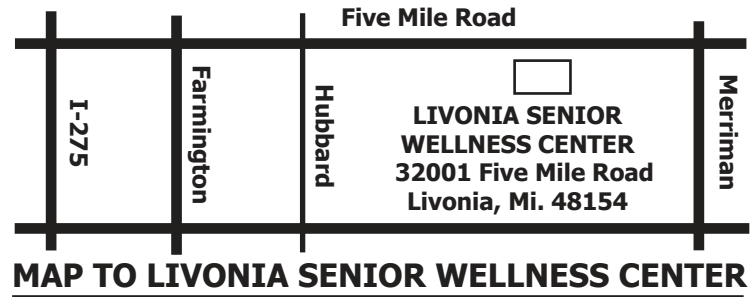
June: 2026 MWG Field Trip

Where: Allen Park High School Shop,
18401 Champaign , Allen Park, Mi. 48101

When: June 13th 10:00-12:00 pm

Contact: Dan Holowicki (313) 702-5836

See what the students, hopefully future MWG members, are making.



Pen Turning The Making of Custom Pens

April 12th

Join us as **MWG members** demonstrate how to make custom wooden pens. Made from wood and acrylic blanks they make excellent gifts for family and friends. Matching pencils could also be made. This will be fun to watch and see a turned pen come alive. Coordinated by **Larry Last**, everything starts at **1:00 PM**



HAPPY EASTER



President's Corner

By Jerry Romito



April 2026

Guess what? I really don't have anything new to write about this month. So instead let me just ask the members out there a few questions about how you see the guild. This is not a survey, just questions that the President and the board think about as they plan our activities.

- Presumably anyone that joins the guild is hoping that it will be helpful in some way for their wood-working experience. Are you finding that it in general has been worthwhile?
- Do you come to a meeting only when the topic is of particular interest to you, or do you try to come to as many meetings as you can?
- The board tries to present a broad range of meeting topics. Have we been doing ok, or are we missing out on topics that would interest you?
- Are there any disappointments that you have with the guild?
- Is there any one major thing that you would like to see in the guild that you don't?
- Are there any shortcomings with the new Livonia meeting venue?
- We hope that the typical meeting snacks have been appetizing. Would you like to see anything else on the menu? Should we ask the members to contribute snacks from time-to-time?
- Do you regularly read the newsletter? If so, are the meeting reviews useful to you? The Presidents Corner? The toy articles? Would you like to see other regular columns?

- Are you aware of our meeting YouTube videos? If so, do you watch them if you attended the meeting? Or if you did not attend the meeting? In any case are they helpful for learning from the meeting?
- Would a mentoring program of some sort be high on your list of desired guild activities?
- Would you like to make a meeting presentation to share your knowledge or skill?
- Do you have any comments on anything?

If you have any thoughts that you would like to share you can let me know at the next meeting or email me at GJRomito@aol.com

Jerry Romito

ODETTE FERGUSON
SALES REPRESENTATIVE
E-mail: odette@sawspec.com



Your single source for all
your sawing needs...from
coolants to machinery

Voice
800-SAW-SPEC
800-729-7732
734-941-2824
Cell
734-740-1691
Fax
734-941-2883

Member of
Industrial Distributors Association
International Saw & Knife Association

GLENN WING POWER TOOLS

33656 Woodward Ave.
Birmingham, MI 48009
(248) 644-0444
(248) 644-5790 Fax
(800) 821-5177 (US)
(800) 448-1572 (MI)

Jeff Wilmot



MEETING REVIEW



By Dale Aushman

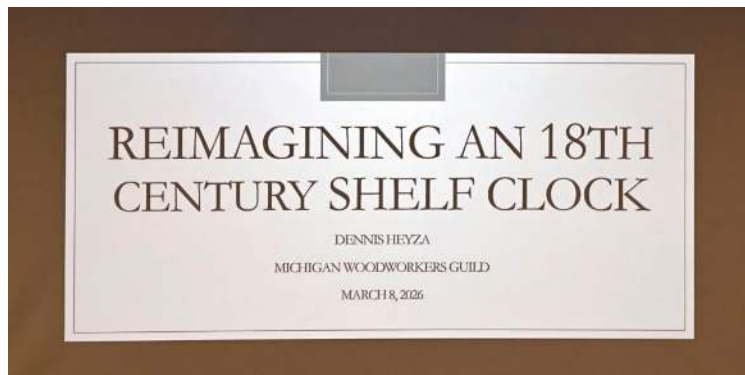
MWG Meeting Review

Dennis Heyza:

Reimagining an 18th Century Shelf Clock

Livonia, MI – 8 March 2026

Member **Dennis Heyza** shared his remarkable journey of discovering the origin and history of a rare form of 18th-century clock: a scrolled-pediment shelf clock on a cabriole-leg base. He first encountered this clock in an online photo about 10 years ago, fell in love with the form, and decided he wanted to build one. Without access to the original, he developed plans through extensive research and a good deal of imagination.



18th Century Shelf Clock

Dennis has worked with wood on and off for most of his life, but it was not until his retirement five years ago that he began pursuing woodworking seriously. Primarily self-taught, he has expanded his knowledge through membership in the Society of American Period Furniture Makers (SAPFM) and by attending Colonial Williamsburg's *Working Wood in the 18th Century* symposiums. He mainly uses hand tools, along with a powered lathe.



Dennis Heyza Inspirations

After seeing the single-view photograph, Dennis spent years searching—on and off—for enough information to produce a set of measured drawings. He eventually discovered that the clock had been part of a 1995 exhibition at the Historical Society of Berks County, Pennsylvania. From the exhibition catalog, he learned that it was a privately owned, 39¼-inch-tall cherry “chamber clock” made by **Daniel Rose** for the governor of Pennsylvania in 1797. At that time, only a frontal-view photo was available. He did locate a somewhat similar clock with bonnet-on-stand features by an unknown maker in *Nutting's Furniture Treasury, Vol. 2* (plate 3415).



Dennis Heyza's Starting Picture

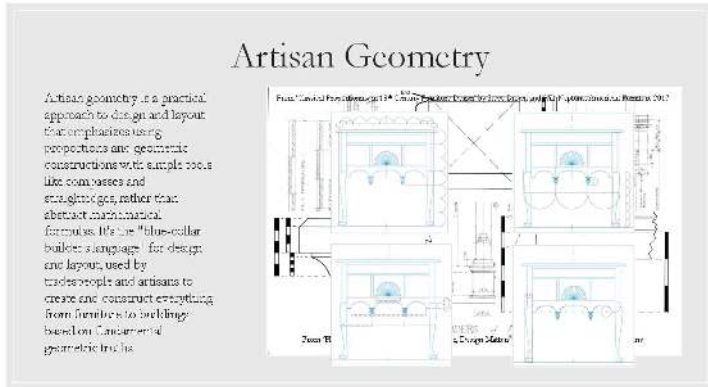


Dennis faced numerous challenges in attempting to reproduce the clock. He had very limited information beyond its height and material (cherry). The only available image was a straight-on view, leaving details such as molding profiles unclear. He lacked familiarity with period clock construction, had no knowledge of mechanical clock movements, and had no prior experience with marquetry, inlay, or carving. The form itself also appeared unique, as he initially could find no comparable examples—though he later learned that this style of shelf clock was specific to the Berks County, Pennsylvania area.



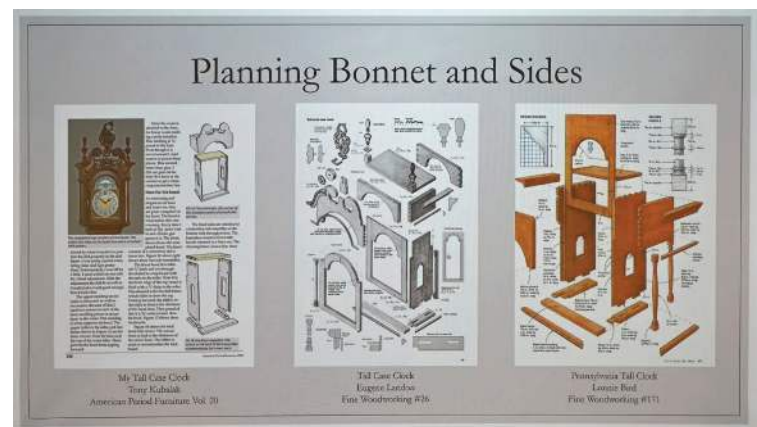
Dennis's Scaled Drawing

At this point, as Dennis describes it, “providence stepped in.” While searching for clock dial ideas, he came across the website of **David W. Bowers**, a period furniture conservator from Carlisle, Pennsylvania. Remarkably, Mr. Bowers had previously been contracted to restore the very same **Daniel Rose** clock. (carlisleantiques.net/daniel-rose.html) With the owner's permission, Mr. Bowers had retained a high-resolution color photograph, several measurements and construction notes, and numerous templates from the restoration—all of which he shared with Dennis. With these materials, Dennis was able to refine his measured drawings and gain a much clearer understanding of the clock's construction.



Artisan Geometry

Determined to proceed, Dennis began developing a measured drawing from the single photograph using the principles of artisan geometry—a practical approach to design and layout that emphasizes proportions and geometric constructions using simple tools such as compasses and straightedges. Often described as the “blue-collar builder's language,” this method has been used for centuries by tradespeople and artisans. Using dividers, he discovered that the design incorporates linear and curved elements with integer-based proportional ratios. He then scaled measurements from the photograph to the clock's actual dimensions. At the same time, he studied SAP-FM publications to better understand the construction of scrolled-pediment clocks, enabling him to draft the clock's basic elements and create templates.



Bonnet and Side Drawing

The story did not end there. Around this time, Dennis happened to watch an episode of *Antiques Roadshow* featuring a similar bonnet-on-stand clock attributed to **Daniel Frost**. The guest explained that the clock had



belonged to his grandfather, **Matthew Scott Sloan**. The appraiser noted that he had tracked the clock for over 45 years and traced its history back to a 1924 exhibition at the Pennsylvania Museum of Art (now the Philadelphia Museum of Art). The clock was later sold at a New York City auction of the Howard Reifsnnyder collection.



Dennis's Template

Matthew Sloan attended that auction and bid on the clock but was outbid by his friend **Henry Ford**, who was acquiring pieces for what would become the Ford Museum and Greenfield Village. Several weeks later, Ford decided he no longer wanted the clock and gifted it to Sloan. A plaque on the clock documents this history. The appraiser also noted that the dial appeared nearly new, suggesting it had been reworked, and that the attribution to **Daniel Frost** was specula-



Dennis's Ball and Claw Hand Carved Foot

tive. Like the clock Dennis is reproducing, it was in fact made by **Daniel Rose**. This discovery provided a third known example of this distinctive clock form. Dennis then described his construction process using hand tools. Beginning with his templates, he built the stand portion of the clock. For the cabriole legs, he used a turning saw—much like a modern woodworker might use a band saw—to cut the shapes. After refining the forms with files and spoke shaves, he carved the ball-and-claw feet—his first attempt at this feature—after practicing on poplar. The results were excellent.



Piedmont Layout

He flattened his boards entirely by hand and constructed the bonnet box using a Stanley 45 to cut grooves for the clock face frame and back panel. He joined the front corners with half-blind dovetails. The pediment was cut with a hand bowsaw and refined with spoke shaves and a rasp. He turned the three finials on his 80-year-old lathe and will be hand carving their flame details. The waist molding was shaped using scratch stocks with two profiles. The gooseneck moldings will be hand-carved, and he shared a basswood practice piece demonstrating his progress. As with the original, the width of the central cove molding varies along its length. Dennis clearly has the skill to execute these demanding elements.

He also demonstrated progress on the inlaid decoration, which includes a bullseye motif on the base apron drop, double cross banding around the drawer front, and a compass rose on the pediment board below the center finial.



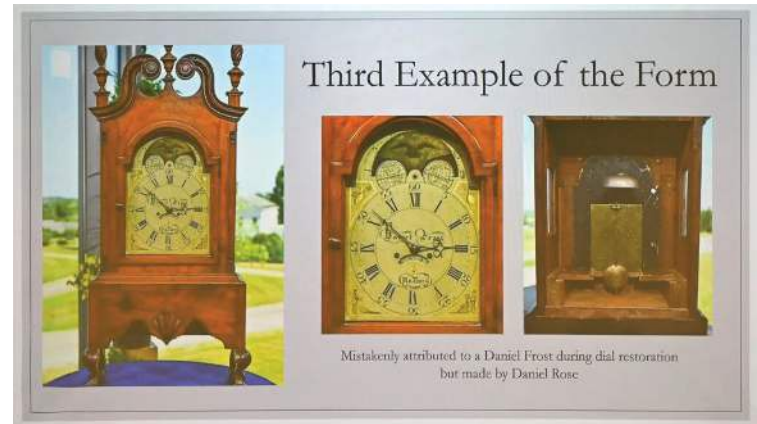
Dennis's In-Process Clock

For the clockworks, Dennis purchased a 1908 movement from a salvaged mantel clock on eBay for under \$50. However, the hands were undersized and stylistically inappropriate, and the pendulum configuration was unsuitable. He sought assistance from fellow SAPFM member and horologist **Troy Livingstone**, who provided period-correct hand designs, modified the fittings, supplied an appropriate pendulum bob, and a more appropriate bell.

Dennis created the dial face himself using guidance from the Historical Society of Early American Decoration (HSEAD). The full set of videos can be found at: <https://vimeo.com/showcase/3057657>. While he achieved good results with the time rings and numerals, he found the lettering particularly challenging. He has since enlisted an artist in Ferndale to complete the calligraphy and decorative elements.

Dennis expects to complete the clock within a few months. Remaining tasks include finishing the dial

frame and constructing the door. He has already obtained hardware from Horton Brasses and Merritt's. His planned finish is three coats of Minwax Antique Oil, an oil/varnish blend that is no longer manufactured. He intends either to source remaining supplies or mix his own based on known proportions.



Clock Faces

Minwax's website says Antique Oil is 25% BLO, 25% alkyd varnish, and 50% mineral spirits. Also Dennis experimented with various mixtures and settled on a blend of 30% BLO, 30%, (non-urethane) spar varnish, and 40% turpentine. The interior has already received one coat of blond shellac.

Dennis' pursuit of this clock from a single photo to a beautiful operating clock is very impressive. And his learning of new woodworking skills across the board, and focus on hand tools makes it an extraordinary accomplishment.

We thank Dennis for his excellent presentation and accompanying PowerPoint, as well as for sharing this fascinating story of discovery and craftsmanship. Appreciation is also extended to **Larry Last** for coordinating the meeting; **Paul Thoma** and **Dave McCagg** for video production; **Dan Holowicki** for event photography; and **Kevin Goulet** for editing and posting the recording to YouTube (Michigan Woodworkers Guild – Meeting Video channel).

- Dale Aushman

Find Dennis Heyza's Presentation with the following link:

https://michiganwoodworkersguild.com/wp-content/uploads/meetings/Dennis_Heyza_MWG_March_2026_3-8-26PDF.pdf



TRUNK-A- WOOD EXCHANGE



Do you have some wood that hasn't seen the light of day in decades?

Do you have cut-offs from your last project which are just too good for the burn pile?

Do you have pieces that you would like to donate to the MWG Toy Program?

We invite everyone to bring their pieces for sale, exchange, or give-away.

Just open your trunk in the parking lot to let everyone see the treasures you have **(Please keep these pieces outside)**.

Who knows, you probably will go home with nothing more than what you came with or some extra "got-to-have, never been seen before" samples of your own.



DUSTY HUMOR



- Trees get online the same way as humans, they just log in.
- It doesn't matter to a forest when a bank closes, that's because they have so many branches
- The tree was stumped because it couldn't get to the root of the problem.

These phrases are provided purely for your humorous enjoyment. Feel free to send your favorite woodworking pun to the MWG Newsletter Editor for possible future publication.





**CHILDREN'S
HOSPITAL
MWG PROGRAM
UPDATE**



From Ron and Dan

News from the Toy and Box Committee

Children's Hospital Child Life Services

At our March meeting, we had a very special guest giving us an overview of how our toys and boxes benefit Children's Hospital.

Aleison Kowalski is an ICU nurse at Children's Hospital. She is under the direction of Sinnead Nimmo, Child Life Projects Specialist. The Snowpile program that we collect toys and boxes for falls under the Child Life Services program at the Hospital.



**Toy Committee Chairman Ron Ross and
Children's Hospital ICU nurse Aleison Kowalski**

The department of Child Life Services at Children's Hospital of Michigan strives to provide an education-based approach to empowering patients and families to experience a positive, self-affirming and healing healthcare experience. The Child Life team has a number of specialists in hematology, oncology, pulmonary, intensive care, neurology, radiology, cardiology, surgery and emergency services. The department also has educators disciplined in general education,

art, music, physical education to continue a child's development in extended stays at the hospital. Child life specialists promote effective coping through play, preparation, education, and self expression activities. They provide emotional support for families, and encourage optimum development of children facing a broad range of challenging experiences, particularly those related to healthcare and hospitalization.

Aleison knows full well what it is like for children at the hospital. When she was a child, she had an extended stay at the very same place where she now works. Aleison went on to explain further how the team members interact with patients, provide for them, aid in their development and help to reduce the stress of a long term hospital stay on a daily basis. She also gave a slide show of several 'activity rooms' where children can learn and relax. This is where many of the toys we build are kept on hand for the children to use. These include Jack's Tree House (for siblings 2 yrs and up), Visteon Activity Center (patients and siblings 5 yrs and up), The Patient Library (all ages), The Toys R Us Activity Center (all ages), McKenna's Beauty Bar (patients and siblings 5 yrs. and older) and the Bone Marrow Transplant Activity Center (for bone marrow transplant patients only). These activity centers allow for a sense of normalcy, where children can socialize and other age appropriate activities.

Surprisingly, patients at Children's Hospital can be up to 25 years old. While most of the toys we make are not something that would interest teens on up, these items do benefit toddlers and younger children immensely. Pull toys and toys that roll on the floor are useful in helping patients become ambulatory immediately after surgeries. Puzzles are great for learning, coordination and developmental skills, especially those that match shapes with openings. We need to remember that toys which include removable pieces (such as puzzles) have to be large enough so that there is no choking or swallowing hazard.

The specialists in Child Life Services do an excellent job of explaining to patients exactly what is go-



ing to happen during medical procedures. A couple props that MWG members have made over the years include a pedal car airplane that patients could 'fly' from one location to another and an MRI 'tunnel' that patients could put a doll in and take it out to show how it works and become accustomed to prior to the actual testing.

Plain boxes and Memory boxes are quite useful. Plain boxes are used by children to tote their belongings around during their stay in the hospital. We request that plain boxes have only a light clear finish as many children like to decorate their boxes in a variety of ways. Memory boxes are especially important as a memento to the families of patients who have not survived the hospital stay. In some cases, siblings of lost patients are invited to decorate and place a special item into a memory box as a way of healing. Aleison mentioned that so far this year she has personally provided 8 memory boxes to family members. This is in addition to children who pass away in other parts of the hospital, like the emergency room. So yes, memory boxes are still needed within the hospital system.



**MWG member's toy display
at the March 2026 meeting**



**MWG member's toy and box display
at the March 2026 meeting**

Aleison was very grateful for the interest, comments and questions our members had during her presentation. She also remarked at the quality of the toys and boxes in our display. After her presentation, it was apparent that the items we make for the hospital are indeed needed and appreciated.

As always, the Guild will provide standard and treaded wheels in 1", 1 1/4" or 1 1/2" diameters, 1/2" OD nylon washers and 1/4" diameter wheel pegs free of charge to any member who wishes to make toys for this program. The Guild still has an inventory of non-standard wheels and other toy parts that have been recently categorized. While there has been a good response to these non-standard items remember that once they are gone, they will not be replaced. We try to bring a few of these non standard items to our regular meetings. You can always contact Ron and Dan for additional information on these non standard parts.

Updated guidelines for building and finishing of toys and boxes are readily available on our website. Please do your best to follow these guidelines. We need to be compliant with the hospital's rules and to some extent, government regulations.

Once again, we wholeheartedly thank all those members who continue to support this program. Should you have any suggestions for the program please feel free to send either of us a note or speak to us at a future meeting. Our contact info:

Ron - 734- 812-5531 - ross1508@gmail.com
Dan - 313-702-5836 - dan56laura@att.net



Glory B Face Painting
 ~ All Year Round ~
 Beki 248-615-0680
 Affordable Price Options
 Birthday Parties
 Special Events \$5 per Child/Student
 Camps
 Family Reunions



Donate "Any Tool, Any Condition"

MARSH POWER TOOLS
 SALES AND AUTHORIZED FACTORY SERVICE

20579 Middlebelt
 Livonia, MI 48152
 (248) 476-7744

7187 Grand River Ave.
 Brighton, MI 48114
 (810) 220-1122

Fax: (248) 476-1090

GRACE WHITE GLASS
Art You Can Grasp

DECORATIVE CABINET HARDWARE

Ann Ivory
 call (313) 506-1963
 www.GraceWhiteHardware.com

Made by in Michigan

For membership information contact Dave McCagg at: d2mccagg@provide.net
For name tags, sign up with Ed Stuckey at a regular meeting.

6 MILE RD.

George's Senate Coney Island Restaurant
 39450 Dun Rovin Dr.
 Northville, Mi. 48168

5 MILE RD.

HAGGERTY

I-275

MAP TO GEORGE SENATE RESTAURANT
 HAGGERTY BETWEEN 5 & 6 MILE

Next MWG Luncheon: (Coordinated by TBD)
Thursday, 23 APRIL 2026 at 10:16 AM

Executive Board Members / Committee Chairs

Jerry Romito.....	President.....	248-475-5976
Frank Kalinsky..	Vice President....	734-516-3405
Dan Holowicki...	Secretary.....	313-702-5836
Ed Stuckey.....	Treasurer.....	313-345-3671
Dan Holowicki.....	Officer at Large.....	734-283-9898
Tony Gigliotti	Officer at Large	248-320-8376
OPEN	Officer at Large	OPEN
Ron Ross.....	Officer at Large.....	734-812-5531
Rich Herbert.....	Officer at Large.....	248-628-0644
Ragnar Bergethon...	Officer at Large.....	248-608-8436
Paul Thoma	Officer at Large.....	734-829-7192
Gary Assarian...	Officer at Large.....	248-310-9328
Dave McCagg.....	Officer at Large.....	734-482-6764
Ragnar Bergethon..	Website	248-608-8436
Dave McCagg.....	Newsletter Editor.....	734-482-6764
Dave McCagg.....	Membership.....	734-482-6764
Larry Last..	Programs/Website Calendar....	248-207-9386
Bob Mills.....	Mentoring.....	248-535-6718
Kevin Goulet	Camera Chair	248-672-5341
Fred Ball....	Web Site Calendar (Backup).....	248-681-3108
Ron Ross.....	Toy Program.....	734-812-5531
Kevin Goulet.....	Officer at Large.....	248-672-5341
Ron Ross.....	Food Coordinator.....	734-812-5531