



MICHIGAN WOODWORKER

michiganwoodworkersguild.com



Michigan Woodworkers' Guild (est. 1981) February 2023 Vol. 44 No. 2

When / Where:

SUNDAY, FEBRUARY 12, 2023

(Socializing Starts at 1:00 PM , Business meeting Starts at 2:00 PM)

In-Person Meeting:

**CNC Milling
by Rockler**

Meeting Coordinated by: Ron Ross



IN-PERSON MEETING AT:
Livonia Senior Center

FEBRUARY:

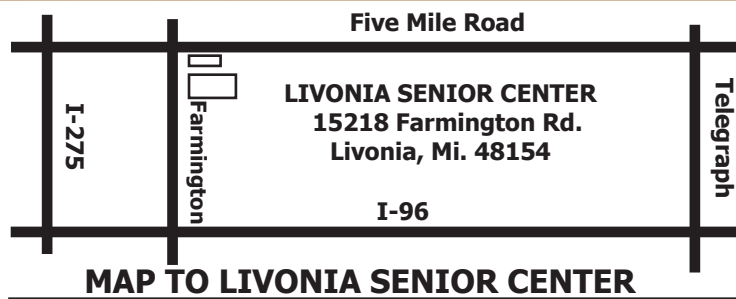
At our **2:00 PM February 12th 2023** In-Person meeting presented by Rockler, discover the endless possibilities of what you can make with a CNC Router! From 3D wood carvings and precision cuts to carved plastics to laser engravings, this live demo will walk you through the basics. Don't let this opportunity pass you by!

MARCH:

Our **2023** full day seminar will feature **Mike Belzowski** demonstrating techniques for wood bending as well as veneering. Coordinated by **Ken Wolf**, make sure you sign-up right now (Pg. 10) for the **Saturday, 11MAR2023 (9:00 AM – 4:00 PM)** seminar at Livonia Senior Center.

APRIL:

Larry Buettner makes beautiful bowls using a band saw and sanding instead of a lathe. To look at them you cannot tell the difference. Come to the **Royal Oak Senior Center** to see his process, sample glue-ups, segments, and a variety of his finished bowls at our **April 16th 2023** meeting coordinated by **Jerry Romito**.



**CNC Milling Demonstration
by Rockler**

February 12th

Organized by **Ron Ross**, Rockler's very own **Jammy** will demonstrate the possibilities of **CNC routing**. His expert demonstration will show us how to set up a file, import images, layout parts on the machine, generate tool paths, and then construct a carving of Berg's Race Car.

Everything you will need to know to get started in the CNC world.





President's Corner

By Jerry Romito



February 2023

This year certainly did not start the way that we had planned it. Two days before the January meeting our speaker **Dan Reahard** informed us that he was ill and could not make his presentation. So we scrambled and put together a new presentation with three of our stalwart members.

Then I got sick a few hours before the meeting and could not attend, so our brand-new Vice President **Dan Holowicki** stepped in and ran the meeting. All-in-all I'm told that the meeting was well-received, and you can read about it in **Dale Ausherman's** review in this newsletter. On a bright note, there were at least 60 attendees, which included a group of perhaps ten **Detroit Area Woodturners**. I hope that this is a sign of ongoing sharing between the local guilds.

February's meeting will be something different, with **Rockler** Novi presenting the basics of **CNC** routing with a live demonstration. Even though **CNC** is relatively new to the home woodworking hobby, we have noticed that many of our members are not only interested in it, but some have already taken the plunge. Who says old dogs can't learn new tricks.

It is now time to reserve your spot at our special all-day Saturday seminar on **March 11th**

with woodworking professional **Mike Belzowski**. You can read about it in this newsletter and on the MWG website. I have also emailed a flyer to all MWG members, which includes a registration form. I encourage everyone to sign-up early so we can get a proper headcount for the included lunch. The fee is \$25 for MWG members and \$30 for non-members, which includes a one-year MWG membership.

We are seeing a spurt of new MWG memberships. This is partly due to our new color tri-fold flyers which we have placed around town at **Rockler-Novi**, **Woodcraft-Canton**, **Woodcraft-Sterling Heights**, **Glen Wing Tool**, and **Rochester OPC**.

I have been contacted by a librarian at the **Royal Oak Public Library**, asking if we would be interested in making a one-hour presentation on woodworking. I proposed a title "**Woodworking as a Hobby – From Beginner to Expert**". It could be a PowerPoint with photos and Youtube videos, along with a project display. Think about it and let me know if you would be interested in helping to make it and present it. Reach me at:

GJRomito@aol.com.

Jerry Romito
MWG President

ODETTE FERGUSON
SALES REPRESENTATIVE
E-mail: odette@sawspec.com

Saw & Specialty Corporation
Saw Service Centers
"EXCLUSIVELY SAWS SINCE 1919"
10555 Shook Rd. P.O. Box 74438
Romulus, Michigan 48174-0438
www.sawspec.com

Your single source for all
your sawing needs...from
coolants to machinery

Voice
800-SAW-SPEC
800-729-7732
734-941-2824
Cell
734-740-1691
Fax
734-941-2883

Member of
Industrial Distributors Association
International Saw & Knife Association



MEETING REVIEW



By Dale Ausherman

MWG Meeting Review

Ken Wolf – Stabilizing Wood with Vacuum

David McCagg – CAD Designs for MWG Toy Program

Dale Ausherman – Progress on Tall Case Clock Project
8 January 2023

Dan Reahard was scheduled to be our presenter for the in-person January 2023 meeting at the Livonia Senior Center. He was to demonstrate his incredible skill at carving American period furniture decorative elements such as gooseneck moldings, shells, acanthus leaves, rosettes and the like. Unfortunately Dan took ill a couple days before the meeting so President Jerry and the leadership team had to quickly schedule substitute presentations. Making quick use of ongoing work three presenters were able to step in:

- 1) Ken Wolf demonstrating stabilizing wood with vacuum resin
- 2) David McCagg preparing CAD plans for the Guild toy making program
- 3) Dale Ausherman reporting on progress on a tall case clock project.

And to prove the maxim that when it rains it pours, Jerry himself also took ill shortly before the meeting so that VP **Dan Holowicki** was asked to stand in and conduct the meeting. All three presentations succeeded to productively fill the meeting, and Dan did a masterful job of running the show. We wish Dan and Jerry speedy and complete recoveries from their illnesses.

Stabilizing Wood with Vacuum Resin:

Stabilizing is the process of impregnating wood with a resin to improve its density, durability, hardness and resistance to moisture as well as adding color. **Ken Wolf** has been experimenting with this process

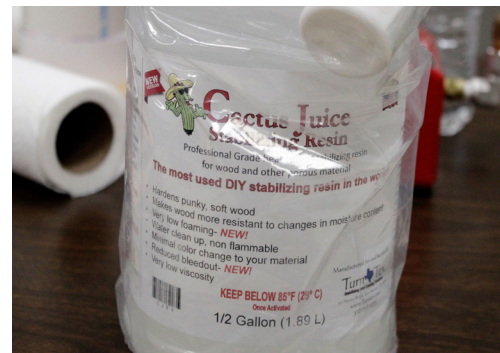


Ken Wolf Showing Impregnation

to make such things as wooden mallets, tool/knife handles, wooden coasters, and woodturning blanks, etc. The well-known Blue Spruce Mallet heads are made of such material. He has the expertise, materials, and tools to show us how this process works, and he could share with us the resulting amazing objects.

TurnTex, LLC is a small, full time family business in Central Texas, owned by **Curtis O. Seebeck**. The company pioneered the vacuum stabilizing process and is a major source of resins, dyes, vacuum chambers and accessories to facilitate the process. They also run classes to educate people in the process. They have an extensive website which includes a help center with demonstration videos.

See: <https://turntex.com/>



TurnTex “Catus Juice”

ready to activate with the included activator in 1/2 gallon and larger. It is expensive, about \$55 for 1/2 gal, but the resin can be reused many times. It can

Their “Cactus Juice” is a heat cured resin used to harden and stabilize most porous material, especially wood. It comes pre-activated in pints and quarts and



also be dyed different colors to impart a different look to woods. You need enough resin to fully cover the object to be stabilized in the chosen vacuum chamber. After activation the resin can be stored at room temperature for up to a year, or in a refrigerator for several years. One must be careful to keep it away from heat as it is heat cured and can easily set up.

The TurnTex website explains the need for a vacuum. Why not just soak your wood blank in the resin? Wood is like a bundle of straws that are filled with



air. The air inside the blank is compressed by atmospheric pressure, and won't let the resin penetrate very far. When you pull a vacuum, you are removing most of the atmospheric pressure that is compressing the air molecule, which allows it to expand. When it expands, it flows out of the blank and into your vacuum chamber to be extracted by the vacuum pump. The more air you can remove, the more room there is inside those "straws" for resin. Since the blanks are submerged in resin and the fact that nature abhors a vacuum, when you release the vacuum the space inside the blank tries to fill back up. But instead of air, it fills up with resin. Basically, the blank sucks up the resin with the help of atmospheric pressure. Then, the atmospheric pressure continues to hold the resin inside the blank instead of allowing it to run out all over the shop floor. All you need to do at this point is to heat cure the resin and you have a resin impreg-

nated blank. There is a TurnTex video which shows the entire process. (See Link below)

The basic steps in the process are:

- Prepare blanks (need to be 10% moisture content or less, preferably 0%. Can dry in toaster oven)
- Place blanks in vacuum chamber and weight down to prevent them from floating
- Add resin to completely cover blanks
- Apply full vacuum to chamber and keep your vacuum pump running until bubbles stop (be sure not to let resin get into the pump – Ken uses a Vacuum Pump saver chamber)
- Release vacuum and soak blanks for at least twice as long as you had them under vacuum
- Remove blanks, wrap in foil or use a drip pan
- Cure at 190-200° F (87-93° C) until resin has solidified, using an oven thermometer to more accurately set temp. (To preserve domestic tranquility, get a used toaster oven at Red Shield store.)
- Remove from oven and allow to cool to room temperature
- Store your excess resin for the next use. The resin cleans up with soap and water.

One can buy various sized vacuum chambers online and from TurnTex itself. They also sell parts and materials to make your own. Ken gave several tips for inexpensive materials, such as Woodcraft Dust Connection Clear PVC Tubes - 36" x 6" for \$35, which can make several vacuum chambers of assorted sizes. He also has used a heavy roasting pan for large objects. He makes his own gaskets out of solid rubber (best) and made a clever gasket cutter jig for making annulus shaped gaskets. And he suggested several sources for inexpensive vacuum pumps. The lower the vacuum one can pull the better resin filled the blank will become. The TurnTex site has an article on selecting a vacuum pump. The vacuum pump should be capable of achieving a minimum of 29" Hg at sea level or 100 microns or less.

Stabilizing wood in this manner looks like a fun and useful thing to do.

You can find the TurnTex video at the following link:

<https://turntex.com/help-center/cactus-juice-stabilizing-resources/87-using-cactus-juice-video>

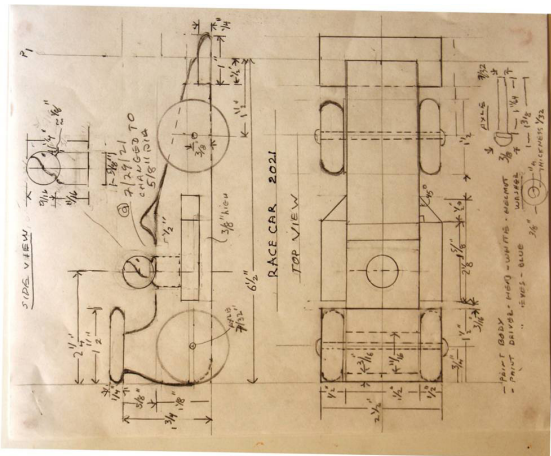


CAD Designs for MWG Toy Program:

Dave McCagg conducted a review of a Guild toy project Computer Aided Design (**CAD**) car using his computer and projector so that attendees could see the process in real time. He started by showing attendees how they can join or renew their Guild memberships online (a natural thing for a Membership Director to do!), and then moved to the Toy Project site to look at the available online toy designs. There are 19 car plans currently on the site, starting with a flat-bed truck and going all the way to Berg's Race Car, designed and submitted by member **Ragnar Bergethon**. One can click on a toy's label and get a pdf plan to view, print, or download to one's own device.

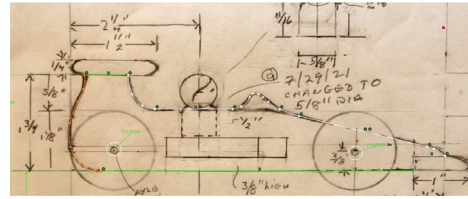
<https://michiganwoodworkersguild.com/programs-projects/special-toy-projects/>

Dave next demonstrated how he used the **CAD** program CATIA to develop a **CAD** file for a toy car, using Berg's Race Car as an example. Berg had supplied a one-page hand-drafted plan for the car, a scaled drawing with elevation and plan views showing all the parts labelled with dimensions. (This plan was a beautiful drawing in its own right, suitable for hanging on a shop wall in my view.)



Berg's Original Drawing

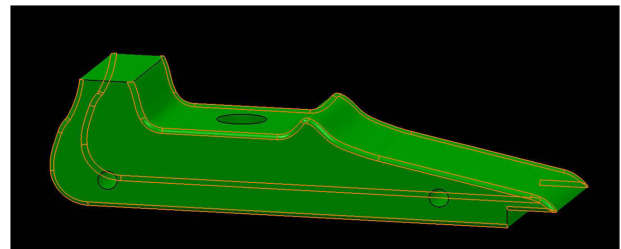
Dave had scanned (imported) this drawing into CATIA and, using a CATIA 2D design module, digitized with his mouse's cursor a portion of the part's outline by selecting line segments and curves with the cursor. He first constructed a 2D profile of the racer's main body, dimensioned and constrained it, then con-



2D Tracing

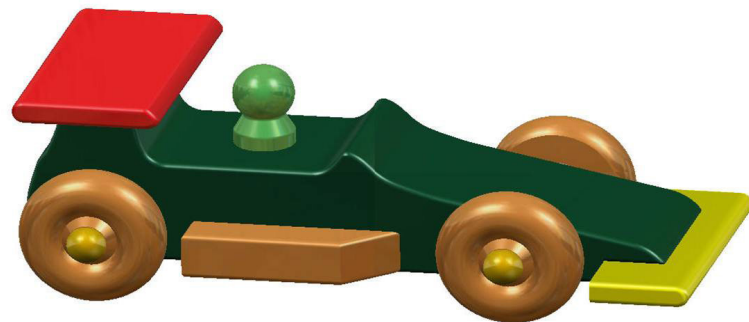


3D Primitive Extruded Profile



Features Added To 3D Part

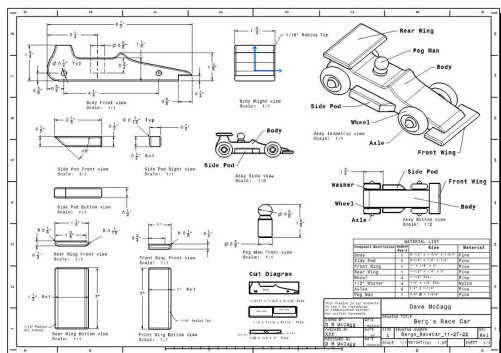
structed a "primitive" (3D body part with shape) by extruding the 2D profile. He adds features to the primitive body shape such as holes for axles and the hole for the person driver ("man"). At this point, Dave assigns a material (pine) to the 3D body. Dave makes a 3D wheel by revolving a 2D profile, and extrudes a small circle to form a cylinder to become an axle.



CAD Assembly



Next he builds an assembly by adding other parts for the front and rear wings, the man, side pods, wheels and axles. The program has tools by which Dave makes assemblies with the various components, which after proper positioning, creates a 3D representation of Berg's Race Car. Standard views can be selected to show the car from the top, bottom, right and left sides, as well as an isometric (ISO) view.



Berg's Race Car - Production Drawing

Once an assembly model is completed the CATIA program has modules for making 2-D drawings with various content directed by the designer. These form the plan pdfs which are available on the website. Members are welcome to submit toy designs via email to Toy Design Chair **Ron Ross**. And we thank Dave for all the work he undertook to make CAD models of many toys.

Progress on Tall Case Clock Project:

Dale Ausherman concluded the meeting with an update of his **Jeff Headley** and **Steve Hamilton** Shenandoah tall case clock project. Today, many would call these "grandfather clocks" but that term had not come about by the 18th century when this clock was first built. Jeff and Steve teach traditional furniture construction courses for today's woodworker at Jeff's school *Woodworking Workshops of The Shenandoah Valley*, near Winchester, VA. <https://wwotsv.com/>, and also teach at other locations. Dale took this class from Jeff and Steve at Marc Adams School of Woodworking (MASW) about six years ago and is still working to completion. (He has interrupted the project with several other woodworking diversions.)

Dale reported on cut list preparation for the class and a new means of labeling and tracking the over sixty pieces required for the build.

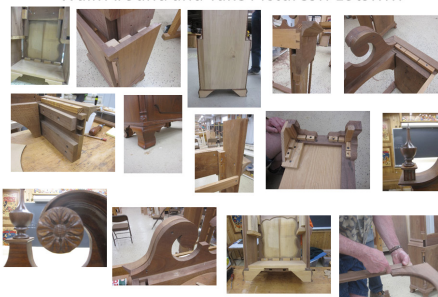
Cut List Wood (63 pieces) – Ready for Class



Dale's Tall Case Project Wood

He is currently working to complete the complex hood portion of the clock, including producing a SketchUp 3-D model to enable understanding of the many hood pieces and their placement. Photos taken at the class, along with those supplied by Jeff and Steve on a class DVD, served to feed the model. Dale also spoke to what is typically made during the

Walk Around and Take Pictures!! Lots!!!!



Dales Documentation Pictures

six day class itself, versus what must then be completed back at the home shop. He also explained his process for building out the hood to align precisely with the pre-purchased clockworks and painted clock face. Dale feels he is now well on the way to completing the hood. Combined with the already completed base and waist sections, the hood will enable a path to a long-awaited completion of the clock.

We thank President Jerry and the management team for quickly arranging a new program to fill in for Dan. And we thank presenters Ken, David and Dale for



Quarter Columns from Shaper



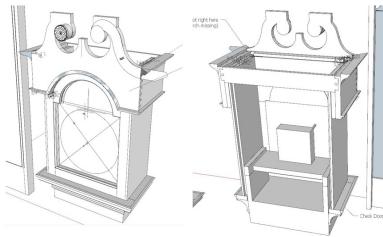
Gooseneck Moldings



Dales Molding

Gooseneck Moulding

SketchUp Model of Headley/Hamilton Clock Hood



Hood Sketch-Up Drawing

stepping into the breach at the last minute. And appreciation is due VP Dan for orchestrating the meeting in such fine fashion.

- Dale Ausherman



Just as a reminder, Michigan Woodworker's Guild yearly dues will become payable January 2023.

Feel free to get ahead of the renewal process by paying your \$25 dues **Early** and **Often**.

A membership renewal form can be found on the website dropdown menu under "Membership - Payment/Renewals"

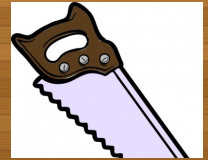
Look for a reminder message in your email inbox

You can find the MWG **Membership Application** on the MWG website with the following link:

https://michiganwoodworkersguild.com/wp-content/uploads/membership/MWG_Membership_Application_Form.pdf



MWG 2023 Seminar

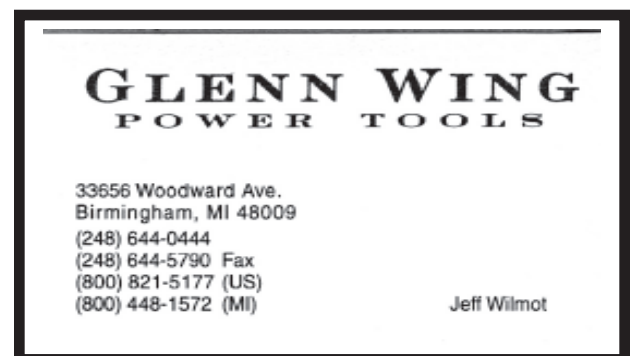


Mike Belzowski is returning for our March 11, 2023 guild daylong (9:00 am - 4:00 PM) seminar to share his skills and techniques on bending wood and veneering.

Mike will demonstrate multiple ways to bend wood including lamination and tapered laminations, steam bending, kerf bending and vacuum forming techniques. Mike also will present veneering basics and beyond including vacuum press gluing strategies, parquetry basics and scroll saw bevel techniques.

How to choose glue types for various vacuum pressing applications and alternative book matching methods are also planned. This all day event will include an on-site lunch for attendees who purchase a reservation to this special event.

See Page 11 for sign-up flier!





CHILDREN'S HOSPITAL MWG PROGRAM UPDATE



From Ron and Dan

Winter Update from the Toy Committee!

Earlier this month I received a letter from Children's Hospital thanking us for our donation of **552 toys** and **22 boxes**. The letter went on to state the Hospital's thank you for the beautiful work we do. You can't get much better than that. The letter is shown on pg. 11 within this newsletter.

For this month I want to highlight a few of our members who did some real nice toys. **Dave McCagg** did a wonderful seal pull toy with a ball on its nose that moves up and down via a cam mechanism. Great job Dave.



Seal Pull Toy

Member **Ragnar 'Berg' Bergethon** did several variations of airplanes and helicopters. The helicopters have moving rotors and one version also has wheels. Berg also did several airplanes, including a sea plane, corporate jet, an open cockpit plane and a bi-plane.

All were very well done, with moving propellers and painted peg people in the open cockpit planes.



Berg's Helicopter Toys



Berg's Airplane Toys



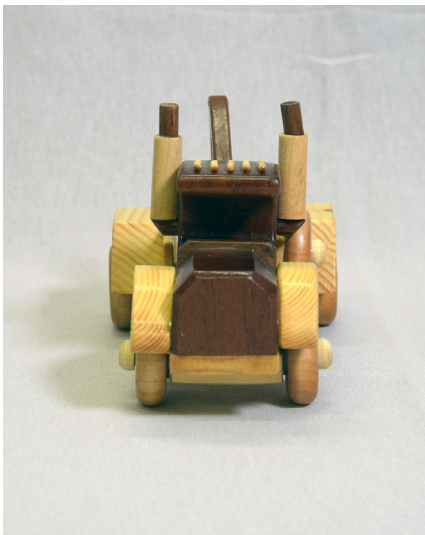
Berg's Airplane Toys 2



Even though he only made 1 prototype which incidentally won Best Design in our first ever toy contest, member **Bill Damico's** tow truck was well liked by members and the subject of many questions and requests for plans. Our Design Team is currently working up drawings for a simplified version of the toy truck that will soon be available on our website.



Bill Damico's Tow Truck - Side View



Bill Damico's Tow Truck - End View

This is the time of year when many of us (including myself) that are in between major projects, the Holidays are over, you finished all those Christmas presents and you need a break or spend time to get the shop organized again before tackling that next heirloom piece. This can be a good time to get a head

start on a few toys. You don't need to make 20 or more at a time. Making a half dozen simple toys with off cuts from the latest projects can be accomplished quickly and easily. I rarely make more than 8 or 10 toys at a time. As many of you know we have a number of different plans and styles of toys on our website. There are also quite a few books, companies and internet sites that have toy plans to either use or offer inspiration for your own designs. One of those sites was brought to my attention by member Kevin Goulet. Acutabovewoodworkings has a number of free plans available in .pdf format. These include farm tractors, baby doll beds and cribs, learning toys, semi trucks, race cars, dump trucks and other construction equipment. There are also links to YouTube videos on how to build these different toys. Check out the website at:

<https://acutabovewoodworkings.com>

As has always been the policy, the Guild will provide standard wheels (1", 1 1/4" or 1 1/2" dia), nylon washers and wheel pegs free of charge to any member who wishes to make toys for this program. We have plenty on hand and if you need these items, they can be obtained by contacting Ron or Dan

The Guild also has an inventory of non-standard wheels and other toy parts that have been recently categorized. While we do have a limited supply and do not plan to re-stock these once the current supply runs out, we currently have:

- 1 3/4", 2", 2 1/4", 2 1/2", 2 3/4" and 3" diameter standard style wheels
- 1", 1 1/4", 1 1/2", 2 1/4", 2 1/2" and 2 3/4" diameter grooved tire style wheels
- 2" and 2 3/4" diameter wagon style wheels
- 1 1/4", 1 1/2" and 2 1/4" diameter flanged style train wheels
- Wood shapes such as acorns, beads, balls, caps and discs
- Large and small shaker style pegs
- Three sizes of wood peg people
- Steam engine/steam train parts and smokestacks
- Various small pieces of poplar, suitable for glue-up



We will continue to set a goal of delivering 400 toys to Children's Hospital for the Christmas Snowpile program. This program is only a part of the toy distribution. Throughout the year a fair amount of simpler toys are distributed to all the clinics within the Children's Hospital Complex. These toys are used by the children in the waiting rooms as they wait to see a specialist or treatment. Some toys are passed out to siblings of child patients when they come to visit. Other toys stay with the children when they are released from the hospital. The hospital also has a need for boxes, both plain ones, which the children can use for activities during their hospital stay and somewhat fancier boxes, usually made with hardwoods and more intricate joinery, which are presented to family members of children who did not survive their afflictions. The hospital does like boxes that are about the size of a shoebox. Also the picture frames on top of the memory boxes are well liked by the hospital staff but not necessary.

Once again, thanking all of you toy makers for your support along with the Guild's board for allowing funding to purchase wheels to distribute free of charge to all the makers.

Ron Ross & Dan Holowicki

For further information on our toy program, request wheels and axles or to arrange to drop off toys, please contact:

Ron - 734- 812-5531 - rross1508@gmail.com

Dan - 313-702-5836 - dan56laura@att.net

ODETTE FERGUSON
SALES REPRESENTATIVE
E-mail: odette@sawspec.com

Saw & Specialty Corporation
Saw Service Centers
"EXCLUSIVELY SAWS SINCE 1919"
10555 Shook Rd. P.O. Box 74438
Romulus, Michigan 48174-0438
www.sawspec.com

Your single source for all
your sawing needs...from
coolants to machinery

Voice
800-SAW-SPEC
800-729-7732
734-941-2824
Cell
734-740-1691
Fax
734-941-2883

Member of
Industrial Distributors Association
International Saw & Knife Association



MWG RESOURCES



As part of your MWG membership, you have access to the **Resource** section of our website where you will find over 200 different woodworking sources. In this section you will find over 50 different categories ranging from **Carving Supplies** through **Hardware** to **Wood Turning**. Below is just a partial listing of the Wood Sources category found on the website.

See link:

<https://michiganwoodworkersguild.com/programs-projects/resources/>

Note: Must be current MWG member to see Resource listings



indicates a Guild member has used this vendor.



indicates vendor offers discount to Guild members.

Woodworking Resources

Search: Sources - Michigan

Category	Resource	City, State	Member Used	Actions
Wood Sources - Michigan	Armstrong Millworks	Highland, MI		View Resource
Wood Sources - Michigan	B and B Heartwoods	Ann Arbor, MI		View Resource
Wood Sources - Michigan	Bell Forest Products, Inc.	Ishpeming, MI		View Resource
Wood Sources - Michigan	Devereaux Sawmill	Pewamo, MI		View Resource
Wood Sources - Michigan	Drayton Plywood Company	Waterford, MI		View Resource
Wood Sources - Michigan	General Hardwood Company - Detroit General Hardwood Company	Detroit, MI		View Resource
Wood Sources - Michigan	Heritier Sawmill	Linwood, MI		View Resource
Wood Sources - Michigan	HMI Hardwoods - Hardwoods of Michigan	Clinton, MI		View Resource
Wood Sources - Michigan	Homestead Hardwood Furniture co.	Allen Park, MI		View Resource
Wood Sources - Michigan	Krupa's Custom Cutting	South Rockwood, MI		View Resource
Wood Sources - Michigan	L.I. Johnson lumber mfg. Co. & Johnson's Workbench	Charlotte, MI		View Resource

MARSH POWER TOOLS
SALES AND AUTHORIZED FACTORY SERVICE

**20579 Middlebelt
Livonia, MI 48152
(248) 476-7744**

**7187 Grand River Ave.
Brighton, MI 48114
(810) 220-1122**

Fax: (248) 476-1090



The Michigan Woodworkers' Guild

Presents

Mike Belzowski

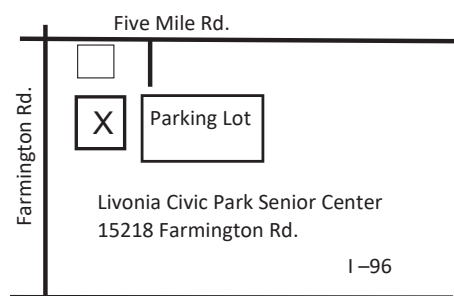
An All-Day Seminar on

Learning New Skills - Wood Bending and Veneering

Mike is the owner of Belzowski Woodwork and Design in Northwest Indiana. He has received formal training from Marc Adams School of Woodworking, and has been featured in Fine Homebuilding's Master Carpenter Series. His woodworking presentations and demonstrations at Johnson's Wood Expos in Charlotte have been a highlight of this annual event for many years.

Mike's wood bending demonstrations in the morning will include kerf bending, laminate/ tapered laminate bending, vacuum bending, hot pipe bending, and steam bending. His veneering demonstrations in the afternoon will include simple ways to join veneer, creating a 4 way match, making a short grain border, adding a filetti, putting it all together, choosing glues, talking about proper substrates, removing veneer tape, and sanding and finishing a panel.

Date: Saturday, March 11, 2023
Time: 9:00 am -- 4:30 pm
Sign in: 9:00-9:30 - Coffee & snacks
Box lunch included: 12:30 - 1:30 pm
Location: Livonia Senior Center
 15218 Farmington Road



Please prepay by mail to reserve your seat and lunch. Mail your check with this form to Jerry Romito at 1995 Wales Drive, Rochester Hills, MI 48306. (Questions call: 248-891-5331)

Make the check payable to: Michigan Woodworkers Guild. **Deadline March 4, 2023**

Name: _____

Address: _____

Cell phone: _____

Home phone: _____

Email: _____

Cost

- ☐ Member: \$25
☐ Non-Member: \$30
 (includes 1-yr. paid
 \$25 membership)

Find this Sign-up flier on the MWG website with the following link:

https://michiganwoodworkersguild.com/wp-content/uploads/Seminars/2023_Mike_Belzowski_1-12-23.pdf



31 December 2022

Michigan Woodworker's Guild
Attn: Dan Holowicki
13824 Longtin
Southgate, MI 48195



Greetings!

Thank you for your recent donation to the Children's Hospital of Michigan Foundation – you made a child's day brighter TODAY! Your donation helps patients and families feel less nervous while seeking necessary pediatric care and we are so grateful. Thanks to you, there are more smiling faces here at Children's Hospital of Michigan.

The description of your donation is below:

- 552 wooden toys; 22 wooden boxes (received on 12/16/2022)

Donations like yours support patients and families throughout Children's Hospital of Michigan. From kids that are experiencing 30-plus day stays for treatment, to children coming for a four-hour transfusion procedure, to kids unexpectedly coming to our emergency department, your gifts play a critical role in uplifting and supporting them while they are here – and beyond. These items are a welcome diversion for most children – they provide comfort and reduce anxiety for themselves and their families as they spend time here at Children's.

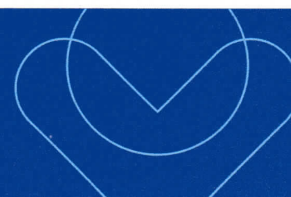
Thank you for having a kind and compassionate heart for the kids we serve at the Children's Hospital of Michigan. If there is anything I can do to keep you close and connected to your impact through the Children's Hospital of Michigan Foundation, please let me know.

With gratitude,

AJQ

AJ Quackenbush
Executive Director of Development
Hospital-based Initiatives
Children's Hospital of Michigan Foundation
C: 989.284.2123 | E: AJQuackenbush@yourchildrensfoundation.org

Thanks for the
beautiful work!





FOUNDER'S DAY
Sale

**DON'T MISS OUR
FOUNDER'S DAY EVENT!**
SATURDAY, FEB. 18TH • 9-11AM

Register in-store to win prizes,
view demos and free gift!
While Supplies Last



\$21⁹⁹

**5" GLUE ROLLER
WITH SILICONE REST**

- Tread depth promotes even film thickness and less squeeze-out

SKU: 61645



\$9⁹⁹

**CENTER/OFFSET
MARKING TOOL**

- Center hole holds pencil in perfectly centered position as you scribe your line

Reg. \$12.99 SKU: 56094



FOUNDER'S DAY SALE PRICING VALID 1/27 - 3/2/2023

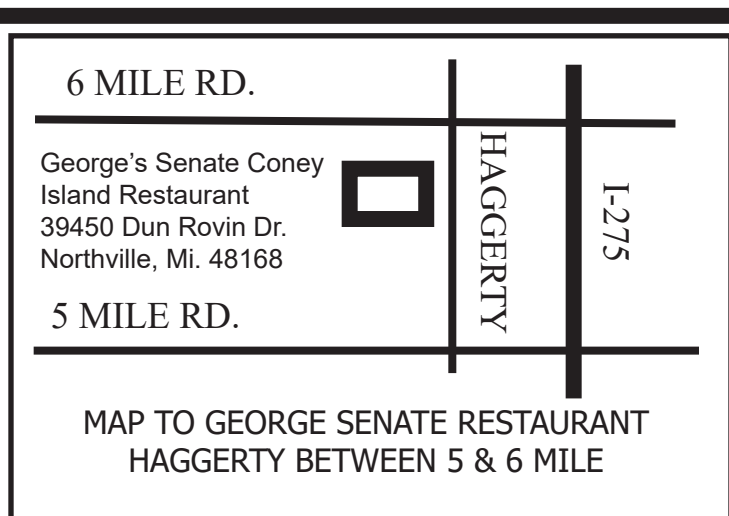
26160 Ingersol Drive • Novi, MI 48375 • (248) 543-5110 • Rockler.com

Please check Rockler.com for current store hours.

For membership information contact

Dave McCagg at: d2mccagg@provide.net

For name tags, sign up with Ed Stuckey at a regular meeting.



Executive Board Members / Committee Chairs

Jerry Romito.....	President.....	248-475-5976
Dan Holowicki.....	Vice President.....	734-283-9898
Ed Stuckey.....	Treasurer.....	313-345-3671
Don Hess.....	Secretary.....	734-207-8427
Dan Holowicki.....	Officer at Large.....	734-283-9898
Tony Gigliotti	Officer at Large	248-853-8349
Bill Gayde	Officer at Large	248-859-3949
Ron Ross.....	Officer at Large.....	734-812-5531
Rich Herbert.....	Officer at Large.....	248-628-0644
Ragnar Bergethon...	Officer at Large.....	248-608-8436
Bill Rigstad.....	Officer at Large.....	734-459-3374
Ken Wolf.....	Officer at Large.....	734-981-3423
Dave McCagg.....	Officer at Large.....	734-482-6764
Tim Kolassa	Library	248-765-3758
Dave McCagg.....	Newsletter Editor.....	734-482-6764
Dave McCagg.....	Membership.....	734-482-6764
Larry Last..	Programs/Website Calendar....	248-207-9386
Bob Mills.....	Mentoring.....	248-535-6718
Kevin Goulet	Camera Chair	248-672-5341
Fred Ball....	Web Site Calendar (Backup).....	248-681-3108
Ron Ross.....	Toy Program.....	734-812-5531
Kevin Goulet.....	Officer at Large.....	248-672-5341
Kevin Goulet.....	Food Coordinator.....	248-672-5341

**Next MWG Luncheon: (Coordinated by Bill Rigstad)
Thursday, 23 February 2023 at 10:16 AM**