



MICHIGAN WOODWORKER

michiganwoodworkersguild.com



Michigan Woodworkers' Guild (est. 1981) January 2022 Vol. 43 No. 1

When / Where:

SUNDAY, JANUARY 9, 2022

(Virtual Meeting Starts: 2:00 PM)

Real Time Virtual Meeting:

Dave McCagg's "Woodworking Design in 3D CAD"

Remote Zoom w/Email Invite to Members

Coordinated by: Larry Last / Jerry Romito

ZOOM MEETING START TIME: 2:00 PM



VIRTUAL MEETING
CONNECTION DETAILS TO
BE SENT BY JERRY ROMITO

JANUARY:

MWG Member, **Dave McCagg**, will demonstrate how we can use **CAD** to design, develop and enhance our woodworking projects at our 2:00 PM **January 9th** meeting. Join us virtually for our first meeting of 2022.

FEBRUARY:

Join us at our **2:00 PM February 13th 2022** Virtual meeting featuring our annual "**Showcase of Skills**" where MWG members show us their outstanding projects

MARCH:

Rich Herbert is coordinating another fantastic presentation by **Marc Adams** entitled "Sculptural Chair in the Maloof style" at MWG's **9:00 AM Saturday, 12MAR2022** seminar



Woodworking Design in 3D CAD

January 9th

Over the past 30 years or so, Computers have become a way of life. Join us as MWG Member **Dave McCagg** will show by example how we can use **Computer Aided Design (CAD)** as a tool for our woodworking projects. See how CAD was used to "re-invent" **Ken Wolf's** toy body coating jig at our **Sunday January 9th 2:00 PM** virtual meeting coordinated by **Larry Last**.





President's Corner

By Jerry Romito



January, 2022

Welcome to 2022. I was hoping that we would be meeting in person now, but with health caution in mind, we are continuing our monthly meetings on Zoom for at least January and February.

The January 9, 2022, meeting will feature Dave McCagg demonstrating woodworking design in 3D CAD (Computer Aided Design). Although this may seem like a foreign topic to many members, I encourage you to join us to at least get a taste of this very powerful tool that is being used throughout the design world. You will be amazed as Dave manipulates a sample solid project in 3D and then creates the 2D drawing necessary for making the parts. He will also show how a 3D solid is "printed" on a 3D printer. You will learn that CAD programs are available for free, and that 3D printers can cost less than your next power tool. So even if you think CAD is not for you, spend a couple of hours to expand your horizons.

Our Zoom meeting planned for February was to be a turning demonstration, but our presenter had a conflict, so we have moved that meeting to April. Our February Zoom meeting will instead be our annual Showcase of Skills, which had been scheduled for April. If you recall, the Showcase Zoom meeting last year was a tremendous success, thanks to the strong participation from our membership. I hope that we can repeat that success this year. But that means that I have to ask everyone to quickly gather your photos together, since we have only one month to prepare. I will soon be sending out a separate email with the details.

Your Board of Directors (BOD) works behind the scenes to keep the guild running smoothly. In normal times we accept BOD nominations for next year from the general membership in October and vote at the

November meeting. Since we are not meeting in person, I solicited nominations in the October newsletter, and the BOD elected the slate during our December BOD Zoom meeting. The 2022 BOD remained the same as 2021. You can see the list on the website (www.michiganwoodworkersguild.com).

Please remember to renew your dues this month, either through the website or by mail.

Here's hoping that we will be seeing each other again in the spring.

Jerry Romito
MWG President



MWG RESOURCES



A Hardwood Resource - KenCraft Company

Past MWG member **Ben Zottolo** attended the **Metro Carvers** 40th annual show in October. He told me about an interesting source of hardwood that was represented at the show.

Called KenCraft Company, they are located in Toledo, Ohio. According to their website they stock over 60 species of domestic and exotic hardwood lumber. They refer to themselves as "The woodworker's candy store."

Since we are always looking for good sources of hardwood, I encourage you to check out their website at: <https://www.kencraftcompany.com>. It is loaded with information, including a very detailed price list of their lumber.

Jerry Romito



MEETING REVIEW



By Dale Aushman

MWG Meeting Review

Colin Knecht & Member Favorite Tools

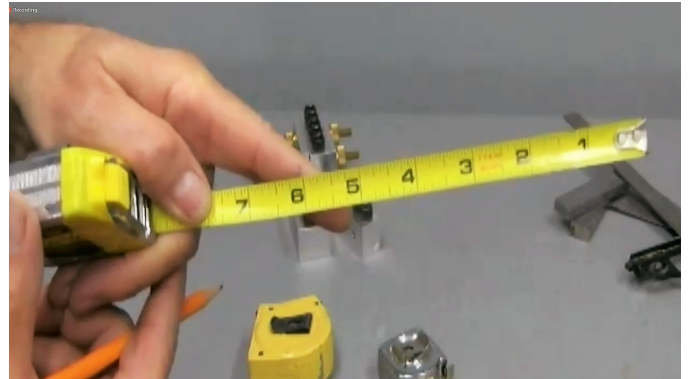
14 Nov 2021

Due to the continuing Coronavirus restrictions on large meetings, the Guild continues online virtual programs to educate and entertain members in the craft of woodworking. Our November Zoom meeting on "*Favorite Woodworking Tools*" was presented jointly by Colin Knecht, (a Ladysmith British Columbia lifelong woodworker and creator of the website www.woodworkweb.com.) and six members. Colin presented seven of his favorite tools, while our six members each presented one or more tools. President Jerry arranged and hosted the live presentation by Colin, as well as presented a PowerPoint file he had produced using tool photos and information supplied by our members. While Jerry showed the photos and charts, each member spoke to their submitted favorite tool. This was a very effective approach as it was like attendees visiting each shop to learn of the tools.

Colin's extensive woodworking experience began with intensive training in high school, including furniture/cabinet making, boat building, and even house building. The website noted above was created in the year 2000 as a resource for woodworkers with articles and pictures on all aspect of woodworking. As the website grew in popularity, in 2008 Woodworkweb again broke new ground as the earliest adopter of YouTube. Since then over 580 videos have been uploaded and viewed by over 80 million people worldwide! He strongly supports clubs and guilds as places where people can come and learn about woodworking then share their ideas, knowledge and achievements.

Colin shared with us seven of his favorite tools. The

first was a left handed tape measure. For such a tape, when one latches the end of the tape over a board end and operates the measure with the left



Left ReadingTape Measure

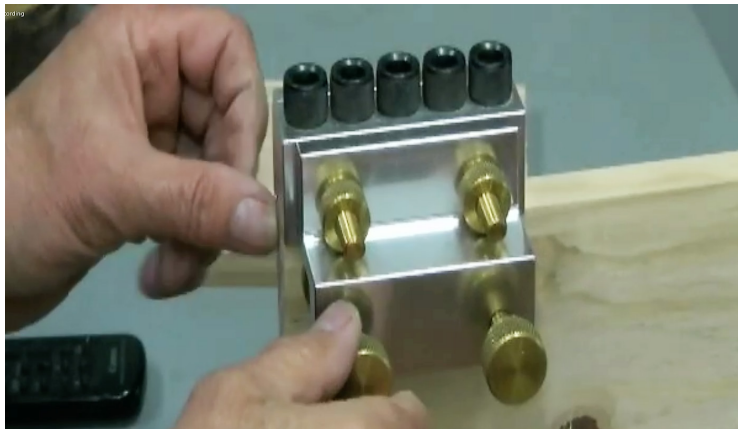
hand (pulling left), the numbers read right-side up and one makes the mark with the right hand. For a normal (right hand) tape the numbers would read upside down in such a configuration, causing possible marking errors. (But for me, a lefty, I prefer to operate (pull) the tape case with the right hand and mark with the left, which puts the pencil in my left (writing) hand. It seems to me the most dexterity is required for the marking, not the pulling, and so the standard tape is best!) Colin indicated that there are tapes which are marked both ways.

His second tool was a conventional wooden marking gauge, with the normal sharp pin for scribing. Colin added the additional feature of a pencil marker by drilling an appropriately sized hole in the other end of the gauge bar. Since the fence is two sided the gauge can then be used either to scribe or to pencil mark. This is brilliant. I have always wanted a gauge with a pencil mark, but did not want to destroy my older wooden gauges. Now I can have both in one tool.

Colin's next tool recommendation was the use of relatively inexpensive steel engineer's squares as a preference over adjustable combination squares, when high precision is required. He suggests having two sizes. He touts their squareness wherein their joints are solid and all their edges and surfaces are ground for straightness and squareness in the factory. On the other hand, wooden handle squares can misalign with humidity changes and cheap adjustable



combination squares can misalign over time with wear. (The *Montgomery Ward* adjustable square my father gave me at age five, about 70 years ago, did eventually become non-square due to wear. I don't know how long my expensive replacement Starrett combo will last but it is now very accurate and is very well built.)



Dowellmax Doweling Jig

Colin is big on dowelled joints and recommends the Dowelmax jig above all others. Colin feels doweled joints are a perfect substitute for tedious mortise & tenon joints. The DowelMax Classic Kit (Currently \$225 on Amazon for 3/8 in. dowels) can be applied to both normal and face-joint configurations. The kit comes with accessories such as 3 aluminum 1/16, 3/8, 3/4 and 1-5/8 inch spacers, an index pin and distance gauge for long workpieces, a Dowelmax drill bit with stop, 5 hardened steel drill guides for 3/8 dowels, and a 45 min. instruction DVD. The Dowelmax site (<https://www.dowelmax.com/>) shows other accessories and parts for other size dowels.

He next moved to the table saw to show some additional favorite tools. The first item was the use of Mag-switches™ to lock jigs to the steel tops of table saws, bandsaws, and router tables, etc. These are very strong magnets which are turned off or on by a switch. (<https://www.kjmagnetics.com/blog.asp?p=magswitch>) The ones he showed are the MAGJIG 150, which supply 150 lbs. of force to the steel plate (<https://magswitch.com/product-category/woodworking/>). Magswitch sells parts for making jigs, and even



Mag Switch Clamp

completed jigs such as feather boards. They make switches with 100's of lbs. of force and larger. Colin uses these switches inserted into oblong holes (two offset round holes together) to make various holding jigs.

Colin used a pair of Magswitches to attach what he called a *Duplication fence* to the rip fence of his table saw. This device is also called an *L-Fence*, and has been widely reported in *Fine Woodworking Magazine* over several years by Bob Van Dyke, the latest being August 2021 No. 290. This wonderfully useful device "can be used as a guide to flush-cut to an exact line or pattern, cut off parts that would otherwise get caught between the fence and the spinning blade, cut very accurate burn-free miters, and say goodbye to those sacrificial pieces of plywood used to cut rabbets." This FWM article has detailed plans and instructions for making an L-fence. And Colin has a video as well. He used the fence to safely trim a live edge from a board and to cut a thin wedge.

The last tool Colin demonstrated was a simple "one side" table saw cross cut sled. This sled serves as a



Table Saw Jig



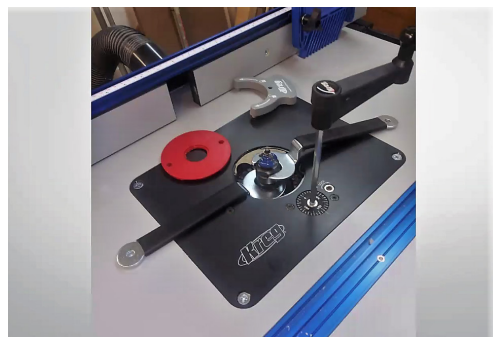
simple miter gauge as it has wood only on one side of the blade and is guided only by a single runner. Colin makes his runner from high density polyethylene (HDPE) to avoid humidity expansion of the runner which would cause misfit of wooden runners.

Following Colin's informative presentation, several Guild members presented their favorite tools. My favorite tool is the Tite-Mark marking gauge. This wonderful tool is made by Glen-Drake Toolworks in California and sold by Lie-Nielsen and others. The heart of the Tite-Mark is its micro-adjustable fence. Slide



Tite-Mark marking gauge

the fence close, secure the tail, and then micro-adjust the head until it is right on your mark. The fence gives you precise, repeatable settings, and the A-2 tool steel blade gives you sharp, crisp lines. Optional cutters include a set of mortise blades for laying out mortises and a scoring blade. There are also extension bars to increase the possible marking depth.



Kreg Precision Router Lift Table

Next Rich Herbert showed his newest acquisition from Woodcraft, a Kreg Precision Router Table System with top, fence, and steel stand. Rich also add-

ed a Bora 3 1/4 horse router motor, a Kreg Precision Router Lift, a Multi-Purpose Router Table Switch, and a Kreg Casters Set. Rich's reason for buying this great setup was to build a tabernacle cabinet for a church, the piece requiring some crown molding and a raised panel door. He showed photos of the beauti-



Rich's Mobile Cart

ful completed tabernacle. Rich also showed a rolling two-level shop cart as a very useful addition to his shop. Many auxiliary items which often clutter horizontal surfaces can be placed on the cart and rolled from power tool station to station to provide easy access to the items during use.



Porter-Cable 4200 Series Dovetail Jig

Larry Last uses a Porter-Cable 4200 Series Dovetail Jig, to which he has added a Leigh VRS1200 Vacuum and Router Support accessory, his current favorite tool. This patented Leigh invention was designed exclusively for Porter-Cable 4200 series dovetail jigs, to provide almost dust-free routing and sturdy router support for improved routing. The easy to install full width router support ensures the router always sits flat for safer and more accurate routing. It also allows



the router to be securely parked out of the way when clamping boards in the jig. The support is used with a small shop vacuum or large dust collection system. The accessory currently sells for about \$95 at Woodcraft.



Ed Stuckey's Dust Collector

As follow up to Bill Pentz' Zoom dust collection presentation to the Guild, Ed Stuckey followed information from Bill's website to build the fine dust air cleaner (http://www.billpentz.com/woodworking/cyclone/air_cleaner.php). This system consists of a Wynn Environmental exterior HEPA filter cylinder mounted on a wheeled plywood square, with a 700 CFM 8 in. inline duct blower on top, blowing out through an 8 in. diameter swivel duct, and controlled by a programmable timer. Ed says total parts cost was about \$300 with many of the parts available from Amazon via links provided by Bill's site. Ed uses this air cleaner to clear his shop air for about three hours AFTER he has completed working. While working, Ed uses his conventional cyclone dust collection system along with the 3M respirator mask and P100 filter discs prescribed by Bill as he reported in last month's meeting report.

Ed also reported on a Joint Matic horizontal router, originally sold by the Strong Company, then later by Shopsmith. This machine is now only very rarely available from private sellers so I will not report further on the tool.



Jet 16/32 Drum Sander

President Jerry next reported his positive review of the Jet 16/32 Drum Sander. He always wondered if these drum sanders did a good job, and has been very pleased with the performance and operation. He and other members have sanded up to 32 in. wide boards by running the piece through twice with no evidence of surface mismatch between the two sides. The unit has variable speed rates to choose the best speed and a Sandsmart™ feature to automatically regulate the speed of the conveyor motor to maintain the highest feed rate without overload. Jerry says belt changes are fast and easy. He has added a BORA mobile base with two steerable wheels, but wishes he had selected a base with four steerable wheels for greater mobility. Several members warn against sanding Pine as it quickly and irretrievably clogs the sanding belt. The Jet sander sells for about \$1,560 at Woodcraft. Jerry also reported the adding of a table extension to his RIKON bandsaw to prevent longer workpieces from falling off of the back edge. He used Melamine for the extension cutting the dados to match those on the bandsaw tabletop.

The meeting was wrapped up by Dan Holowicki with a thorough but concise PowerPoint presentation on block planes, "a versatile go-to tool." He discussed that there are a multitude of styles and prices available ranging from an economical Stanley 9 1/2 on eBay (\$25), to a premium Lie-Nielsen 60-1/2 (\$175), to incredibly expensive Daed Infill Index (\$2,200 and up). He likes a low-angle bevel



up design for trimming end grain, and noted a multitude of applications for block planes in general. The Lie-Nielsen block plane is hands down his favorite plane. Dan indicated the setup he uses for his Stanley and Lie-Nielsen planes, including use of micro bevel about 30 degrees as well as a light coat of paste wax on the sole.

We thank Colin Knecht for his excellent presentation, and Jerry for arranging and running the Zoom meeting. We note our appreciation to the members who presented their favorite tools. As Jerry said at meeting close, "if nothing else we certainly got many ideas for Christmas presents for ourselves!"

Dale Ausherman



Just as a reminder, Michigan Woodworker's Guild yearly dues will become payable January 2022.

Feel free to get ahead of the renewal process by paying your \$25 dues **Early** and **Often**.

A membership renewal form can be found on the website dropdown menu under "Membership - Payment/Renewals"

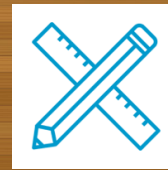
Look for a reminder message in your email inbox

GLENN WING

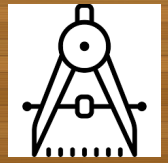
POWER TOOLS

33656 Woodward Ave.
Birmingham, MI 48009
(248) 644-0444
(248) 644-5790 Fax
(800) 821-5177 (US)
(800) 448-1572 (MI)

Jeff Wilmot



**MWG
DESIGN
CENTER**

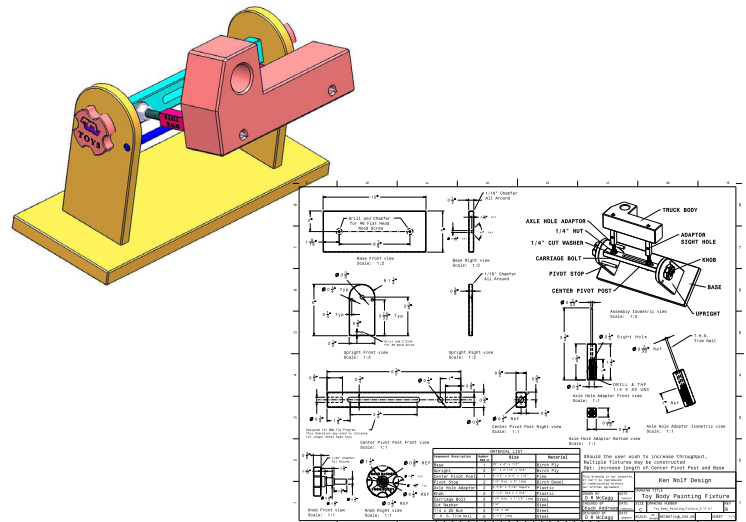


From the Editor

The MWG Design staff has been busy creating new projects.

The latest project shown below shows a jig conceived by Ken Wolf to coat the MWG toy bodies for the Children's Hospital program. Its CAD construction will be described in the January 2022 virtual member meeting on 9JAN2021 starting at 2:00 PM

Everyone is encouraged to make this painting jig, then send your feedback to the MWG Newsletter Editor.



ODETTE FERGUSON
SALES REPRESENTATIVE
E-mail: odette@sawspec.com



10555 Shook Rd. P.O. Box 74438
Romulus, Michigan 48174-0438
www.sawspec.com

Your single source for all
your sawing needs...from
coolants to machinery

Voice
800-SAW-SPEC
800-729-7732
734-941-2824
Cell
734-740-1691
Fax
734-941-2883

Member of
Industrial Distributors Association
International Saw & Knife Association

You can find the Toy Coating Jig plans on the website with the following link:

https://michiganwoodworkersguild.com/wp-content/uploads/designs/Ken_Wolf_Toy_Body_Painting_Fixture_12-31-21.pdf



CHILDREN'S HOSPITAL MWG PROGRAM UPDATE



From Ken and Dan

Happy New Year from the Toy Committee!

The delivery of toys to the Children's Hospital Snowpile Program was completed on December 9th. Our total delivery for 2021 was 439 toys, 2 memory boxes, 17 plain boxes and 20 tool boxes. We had



MWG 2022 Memory Boxes for Childrens Hospital



Memory Box Flower

some newcomers to the program making toys, as well as several individuals who have been active for a number of years. There were many fresh takes on old designs as well as some novel new ones, which we are doing our best to document. Bill Rigstad is assisting us in putting together an album of toys, which will be uploaded to the website.

We would also like to give a special thank-you to all the members who were able to make it a priority and create toys and boxes for the 2021 program. These include **Bill Rigstad, Ragnar Bergathon, Bill Damico, Chuck Andrews, David Nordstrom, Ken Wolf,**

Larry Last, Meg Larson, Vic Bonaro, Ron Ross and Dan Holowicki. Congratulations and big heartfelt Thank-You to all those who were able to participate.



MWG Toy Program 2022 Delivery



2021 MWG Toy Dropoff

Looking forward into 2022, we are planning to add some new designs to the website. We will also be actively updating our list of approved finishes. However, this will take some time and research as we must obtain SDS's as well as CPSIA certificates from the manufacturers.



The Guild also has an inventory of non-standard wheels and other toy parts that have been recently categorized. While we do have a limited supply and do not plan to stock these once the current supply runs out, we currently have;

- 1 3/4", 2", 2 1/4", 2 1/2", 2 3/4" and 3" diameter standard style wheels
- 1", 1 1/4", 1 1/2", 2 1/4", 2 1/2" and 2 3/4" diameter grooved tire style wheels
- 2" and 2 3/4" diameter wagon style wheels
- 1 1/4", 1 1/2" and 2 1/4" diameter flanged style train wheels
- Wood shapes such as acorns, beads, balls, caps and discs
- Large and small shaker style pegs
- Three sizes of wood peg people
- Steam engine/steam train parts and smokestacks
- Various small pieces of poplar, suitable for glue-up

Once we get back to in-person monthly meetings, these items will be brought to the meetings so that members can look them over and take some for toy making.

As has always been the policy, the Guild will provide standard wheels (1", 1 1/4" or 1 1/2" dia), nylon washers and wheel pegs free of charge to any member who wishes to make toys for this program. We have plenty on hand and if you need these items, they can be obtained by contacting Ron or Dan

We will continue to set a goal of delivering 400 toys to Children's Hospital for the Christmas Snowpile program. This program is only a part of the toy distribution throughout the year, with the larger, more complex toys given out at that time. Throughout the year a fair amount of simpler toys are distributed to all the clinics within the Children's Hospital Complex. These toys are used by the children in the waiting rooms as they wait to see a specialist or treatment. Some toys are passed out to siblings of child patients when they come to visit. Other toys stay with the children when they are released from the hospital. The hospital also has a need for boxes, both plain ones, which the children can use for activities during their hospital stay and somewhat fancier boxes, usually made

with hardwoods and more intricate joinery, which are presented to family members of children who did not survive their afflictions. The hospital does like boxes that are about the size of a shoebox. Also the picture frames on top of the memory boxes are well liked by the hospital staff but not necessary.

Once again, thanking all of you toy makers for your support along with the Guild's board for allowing funding to purchase wheels to distribute free of charge to all the makers.

Ron Ross & Dan Holowicki

For further information on our toy program, request wheels and axles or to arrange to drop off toys, please contact

Ron - 734- 812-5531 - rross1508@gmail.com

Dan - 313-702-5836 - dan56laura@att.net





New!
\$119⁹⁹

ROCKLER 4-PIECE DIGITAL MEASURING KIT

- Unfailing precision and digital convenience!
- Magnetic level box attaches to blades for precise angles

SKU: 89409

New!
\$49⁹⁹

JIG-IT® KNOB AND PULL PRO DRILLING GUIDE

- Ensures accurate hole spacing by using the actual pull for setup

SKU: 53038



New!
\$49⁹⁹

ROCKLER MAGNETIC LED TASK LIGHT

- Bright light where you need it most!
- Magnetic base clings to 2 included screw-mount "docks" and clamp-mount bracket

SKU: 68061



WHILE
SUPPLIES
LAST



4/4 RED OAK
\$3.49 BD. FT.

SKU: 64827 **IN-STORE ONLY**



4/4 ASH
\$3.49 BD. FT.

SKU: 62792 **IN-STORE ONLY**



LET'S BUILD YOUR SHOP SALE PRICING VALID 12/31/2021 - 1/27/2022

26160 Ingersol Drive • Novi, MI 48375 • (248) 543-5110 • Rockler.com

Please check Rockler.com for current store hours.

For membership information contact

Dave McCagg at: d2mccagg@provide.net

For name tags, sign up with Ed Stuckey at a regular meeting.

Executive Board Members / Committee Chairs

| | | |
|----------------------|---------------------------------|--------------|
| Jerry Romito..... | President..... | 248-475-5976 |
| Will Wilson..... | Vice President..... | 248-207-8883 |
| Ed Stuckey..... | Treasurer..... | 313-345-3671 |
| Don Hess..... | Secretary..... | 734-207-8427 |
| Dan Holowicki..... | Officer at Large..... | 734-283-9898 |
| Tony Gigliotti | Officer at Large | 248-853-8349 |
| Bill Gayde | Officer at Large | 248-859-3949 |
| Ron Ross..... | Officer at Large..... | 734-812-5531 |
| Rich Herbert..... | Officer at Large..... | 248-628-0644 |
| Ragnar Bergethon... | Officer at Large..... | 248-608-8436 |
| Bill Rigstad..... | Officer at Large..... | 734-459-3374 |
| Ken Wolf..... | Officer at Large..... | 734-981-3423 |
| Dave McCagg..... | Officer at Large..... | 734-482-6764 |
| Ragnar Bergethon... | Bylaws chair..... | 248-608-8436 |
| Tim Kolassa | Library..... | 248-765-3758 |
| Dave McCagg..... | Newsletter Editor..... | 734-482-6764 |
| Dave McCagg..... | Membership..... | 734-482-6764 |
| Larry Last.. | Programs/Website Calendar..... | 248-207-9386 |
| Bob Mills..... | Mentoring..... | 248-535-6718 |
| Ragnar Bergethon.... | Web Site..... | 248-608-8436 |
| Fred Ball.... | Web Site Calendar (Backup)..... | 248-681-3108 |
| Ron Ross..... | Toy Program..... | 734-812-5531 |

6 MILE RD.

George's Senate Coney
Island Restaurant
39450 Dun Rovin Dr.
Northville, Mi. 48168

5 MILE RD.

HAGGERTY

I-275

MAP TO GEORGE SENATE RESTAURANT
HAGGERTY BETWEEN 5 & 6 MILE

Next MWG Luncheon: (Coordinated by Bill Rigstad)
Thursday, 27 JAN 2022 at 10:16 AM