



MICHIGAN WOODWORKER

michiganwoodworkersguild.com



Michigan Woodworkers' Guild (est. 1981) January 2024 Vol. 45 No. 1

When / Where:

SUNDAY, JANUARY 14, 2024

(Business meeting and Socializing Starts at 1:00 PM)

In-Person Meeting:

Box Making

by **Larry Last and Ron Ross**

Meeting Coordinated by: Larry and Ron



IN-PERSON MEETING AT:

Livonia Senior Center

January 2024:

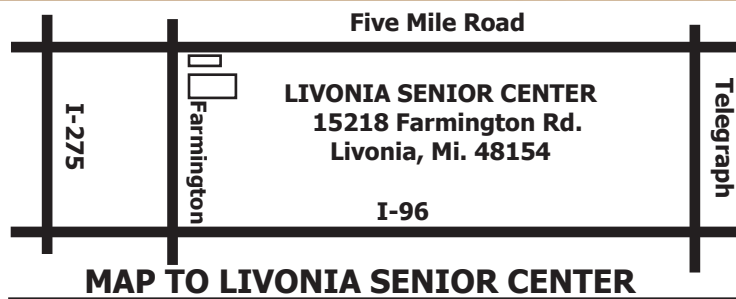
Start the year right with **Larry Last** and **Ron Ross** who will detail various designs and methods to construct boxes for our Children's Hospital Donation program. The **January 14th 2024 1:00 PM** meeting, entitled "**Box Making**", will be held at the Livonia Senior Center

FEBRUARY:

MWG Officer at Large, **Ragnar Bergethon**, has coordinated a demonstration of various Festool tools for our **February 11th 2024** meeting at the Livonia Senior Center. Meeting starts at **1:00 PM**. Speaking is renowned Festool specialist, **Jeff Covey**.

MARCH:

At our **March 10th 2024** meeting, fellow **MWG** member **Ragnar Bergethon** will demonstrate the design and build of nesting chairs. Coordinated by Berg himself, the meeting will start at **1:00 PM**. Note: the completed chair will be awarded to a meeting attendee.



Box Making
by **Larry Last and Ron Ross**

January 14th

Using their unique perspectives and techniques, fellow **MWG** members **Larry Last** and **Ron Ross** will take you on a customized tour of **Box Making**. They will demonstrate how their procedures can be used by each member to construct boxes for the Children's Hospital Donation Program. This should be a fascinating presentation.





President's Corner

By Jerry Romito



January 2024

The New Year

Welcome woodworkers to 2024. One bit of news going forward is that the Royal Oak Senior Center will no longer be open on weekends, which means that we cannot have our one meeting per year there. That means that from now on all of our meetings will be held at the Livonia Senior Center. I suspect that disappoints some of you who had a shorter drive to ROSC, but we have no choice. On a happier note, our full year of meeting programs is booked. Here is a brief look at what is planned.

Jan. 14	Box making - Larry Last and Ron Ross
Feb. 11	Festool demonstrations – Festool
Mar. 10	Nesting chair construction – Ragnar Bergethon
Apr. 14	Design Tools – Rockler
Apr. 27	The art of chairmaking – Tom McLaughlin (all day Saturday seminar)
May 19	Fixing mistakes – Gary Rogowski (presenting from California)
Jun. 15	Tour – Fairlane tour of Henry Ford home restorations
Jul.	No meeting
Aug. 11	Picnic at Royal Oak VFW park
Sep. 8	Showcase of skills
Oct. 13	Sanding – Woodcraft Canton
Nov. 10	Jigs & fixtures
Dec.	No meeting

Save the April 27 Date

We will be hosting in-person the nationally famous professional furniture craftsman and woodworking instructor **Tom McLaughlin** at an all-day seminar on **Saturday April 27, 2024**, from **9:00am - 4:00pm** at the **Livonia Senior Center**.

His topic will be “The Art of Chairmaking”. He will begin with the mortise and tenon Craftsman style chair, then move on to the more curvilinear Queen Anne style, and conclude with the round Hans Wegner Classic Chair.

Some of you may remember Tom from the Saturday Zoom presentation he did for us in November, 2020.

Tom hosts “Shop Night Live” every Thursday night at 7:30 pm on YouTube, and you can see over 200 episodes archived at the Epic Woodworking YouTube channel. He also hosts Classic Woodworking with Fine Woodworking on PBS TV, and is a frequent contributor to Fine Woodworking Magazine. Watch for all the details coming up – but save the date now!

Hardwood Source

Last month I told you about a hardwood source in Allen Park, called **Homestead Hardwood Furniture**, that was having a clearance sale at the end of December. Our member Dave McCagg went there, and called me as he was leaving to tell me that the deals were so good that I should get my butt there immediately. With the holidays at our place being booked, I was not able to get there, but I will try them out later in January when they are restocked.

Dave gives them an **A+** review. Their information is:

**Michigan Hardwood
Furniture Company**
4607 Allen Road
Allen Park, MI 48101


Phil Dobbartin
313-418-8052

homesteadhfc@yahoo.com

It is on Facebook but no website

HOMESTEAD HARDWOODS

PHIL & DAVE



homesteadhfc@yahoo.com

4607 Allen RD, Allen Park, MI 48101

KILN DRIED LUMBER, HARDWOODS,
SLABS, EXOTIC LUMBER

313-418-8052

www.hardwoodsinallenpark.com



New Meeting Segment

I am going to try out a new segment at our January meeting that I hope will be interesting enough to become a regular addition. Watch for it.

Jerry Romito
MWG President



MWG Meeting Review **Jigs and Fixtures** **12 November 2023**

*A Jig, if I am not mistaken,
Frees our hands and helps us makin'.*

I used the short poem above to start my first review of a Guild “Jigs and Fixtures” meeting held in October of 2009, over 14 years ago. After decades of annual jig meetings one would think that there were no new “jigs” to be had for presentation, but this meeting proves otherwise. And with the turnover in members over the years, and members with aging memories such as mine, it is worthwhile doing a repeat jig once in a while.

Thanks to **Jerry Romito** organizing the meeting we had an even dozen jig presentations ready to go, but only had time to present nine of them. We will work to present the remaining three (by Frank Kalinski, Keith Whitehouse and Jerry Romito) in future meetings. We thank you guys for the preparation and look forward to your future presentations.

Fred Ball kicked things off with demonstration of a *V-Drum* sander made from a kit and plans from *Stockroom Supply Company*. Fred's model was a wood kit version of Stockroom's Flatmaster drum sander. V-Drum originally stood for Velcro™ Drum, but the Velcro Company objected to use of the name. The



Fred Ball with Drum Sander

V-Drum is a surface sander. Its drum sits just slightly below a flat table with a slot in it. Fred's version has a 22" wide drum and one can have two halves populated with different grit paper. The drum spins fast enough so that the paper, which is held on by Velcro®, expands slightly off the drum due to centrifugal force. As a result,

when the drum is turned on the paper lifts just enough off the drum for the paper to be slightly proud of the top of the table. How proud depends on the size of the grit. The upshot is that you no longer sand by pressure of the drum, but



Fred's Flatmaster Drum Sander

rather by the size of the grit. The high speed of the rotating drum, which must be around 2,000 rpm, is crucial to making the paper lift properly and consistently. The company sells the moving and mechanical parts along with free plans to build the wooden case. The user makes the case and supplies the drive motor. Fred uses his Shopsmith as the driving power. The V-Drum approach is great because the dust falls down into the case, aided by a vacuum port in the case. The company sells a roller attachment to hold longer pieces of wood flat to the table, but Fred devised his own design for these.

<https://stockroomsupply.com/collections/flatmasters-and-diy-drum-kits>



Gary Assarian with Bench Top Router Table

Another partially shop-built tool was shown by **Gary Assarian**. This was a small bench-top router table powered by a *Makita* 18V Lithium-Ion cordless compact router. The table height above the bench top was custom selected to be a comfortable height for the user. An entire mini router table can be purchased from Lee Valley as the Veritas Table for Compact Routers (\$149), complete with base, a table top milled from 18mm Baltic birch plywood with a low-friction laminate surface, a machined aluminum fence with a pair of laminate-clad sub-fences and face T-slot tracks used for mounting accessories. (See Link Below)

Instead, Gary built his own custom Birch base and equipped it with the separately-purchased Veritas table top (\$49.90) and table fence (\$43.50). The Veritas set does not come with a dust collection port so Gary designed his own and attached it to the fence T-slot. The resulting mini router table enables excellent additional use of any small router.

You can find the Veritas Table for Compact Routers with the following link:

<https://www.leevalley.com/en-ca/shop/tools/power-tool-accessories/router-accessories/110566-veritas-table-system-for-compact-routers?item=05J6710>.

Ragnar Bergethon took us into the realm of dust collection with review of large and small cyclonic dust separators. Over the years he has seen many ads touting the ability of such dust separators to separate chips and dust from the airstream leading to your shop vacuum or dust collector, thus eliminating filter clogging,



Ragnar Bergethon with Dust Separators

suction loss, and messy dust bags. These systems promise to remove up to 99.9% of fine dust and debris from the airstream, containing it safely in

a customer supplied container. Berg was anxious to test whether indeed such was the case. He showed a large *Oneida Air Systems Super Dust Deputy 4/5 Cyclone*, ready out of the box to connect to your dust collector with either a 4" or 6" hose, and to your tools with either a 4" or 5" hose. His tests at home proved the performance of this separator to be as promised.

For our meeting he demonstrated **in-real-time** a much smaller *Home Depot Dustopper Pro High Efficiency Cyclonic Dust Separator*, which simply attaches to any standard five-gallon plastic bucket for waste collection. He inserted an assembled system into the airstream of his 6.5 HP RIDGID



Berg Demonstrating Home Depot Dustopper Pro



shop vacuum, dumped a couple of gallons of dust debris and chips from his shop onto a work table, and proceeded to vacuum it all up. Amazingly when he was finished there was no visible dust or debris in the RIDGID collection drum as it has all gone into the associated Home Depot plastic bucket! After years of being a doubting Thomas, I now plan to buy one of these systems (\$59.98 plus tax for the Home Depot Pro kit).

I always wondered how woodturners make all those



Gary Bruhn with Wedgie Sled

little wood wedges which make up the rings in the layers of a segmented turned bowl. New member **Gary Bruhn** showed us the key with his **wedgie sled**, and it had nothing to do with underwear. The wedgie sled is used on the table saw to quickly make all the wedges for a bowl. The concept and sled was invented by Jerry Bennett, who

runs the Seg-Easy website to provide simple segmented-turning solutions for the woodturner.

<https://segeasy.com/contact.htm>.

Unlike a conventional saw sled, the wedgie sled has two adjustable fences, the angle of each in Gary's design being set by a pair of T-track knobs. To make a bowl ring for a particular diameter with a specified number of segments requires a certain relative angle between the two fences, the angle being a function of the number of ring segments desired. That angle is easily and precisely set for the jig by use of an angular wedge placed between the two fences. The angle of this insert is determined by the design parameters of the intended bowl. Various wedges are available



Gary Bruhn's Wedgie Sled

online from commercial sources. There is also an associated jig called the stop which is used to rapidly set the length of each cut segment between saw cuts. The Seg-Easy site has links to tutorials, videos, downloads and related links. There is also a concise YouTube video

showing the use of a simple wedgie sled to make a segmented ring for a bowl at

<https://www.youtube.com/watch?v=xaEHetjBqio>.

Clay Bolduc next educated us with a number of simple yet useful jigs. The first was a clever **hot-glue gun holder**, with a compartment for holding glue sticks and a Corian surface to catch hot glue drips from the gun nozzle. Next was a shop-made **Card Scraper Honing Jig** from a *Woodsmith* article. The jig incorporates a plywood base that cradles a diamond lapping plate between cleats. To hold the scraper square there is a fence covered with laminate. To hold the card scraper Clay made a plywood clamp with a handle to provide a secure grip. He added thin wood strips as a gauge to set the amount of blade protrusion in the clamp.

<https://www.woodsmith.com/article/card-scraper-honing-jig/>



Clay Bolduc Demonstrating Thread-Insertion Jig

Then he showed an improved **Easy Threaded-Insert Installation Jig**, also from a Woodsmith site, used to install Threaded Inserts perfectly square to the stock. The jig is basically a block of hardwood with a notch cut at one



end. A hole drilled through the notch holds the hardware that keeps the insert straight. Clay's improved version puts a saddle in the middle of the jig block to accommodate the hole for the hardware insert. This is more stable way to hold than a jig with a notch at one end.

<https://www.woodsmith.com/article/easy-hardware-installation/>.

He next showed his version of the Woodsmith **three-sided saddle square** for transferring layout lines from one face or edge of a workpiece to another, in this case wrapping around three sides of a board edge to enable aligned marks on all three surfaces. It consists of two jaws with notches to hold connecting guides, with the sliding jaw having a threaded insert to accommodate a spring-loaded cap screw going through the other jaw, resulting in a spring loaded mechanism which squeezes the jaws against the board to be marked.

<https://www.woodsmith.com/newsletter/2016/05/05/3-sided-saddle-square/>.



Clay Bolduc with Glue Top Popper

Clay's final "jig" was a little wooden opener for opening stuck glue bottles, made from a $\frac{3}{4}$ X 1 X 4" scrap of hardwood. The opener fits over the bottle cap and a lip on the inside

slips under the neck of the cap and provides leverage to pull open the cap. An article from Wood Magazine provides the procedure and dimensions of the holes to be drilled. (See link below)

A hard copy of these instructions was passed around to attendees and I believe there are plans to post them on the Guild website.

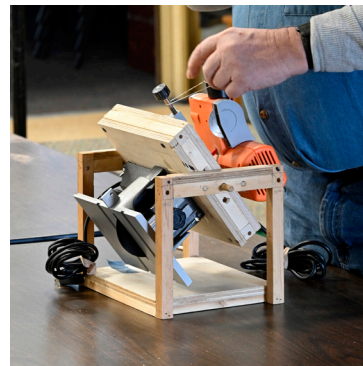
You can find the Glue Top Popper on the Wood Magazine website with the following link:

<https://www.woodmagazine.com/woodworking-how-to/shop-tips/glue-top-popper>.

Vince Choraszewski showed a clever dual-packaging of two mini saws, a *Mini desktop cut off saw* (2 in. blade) and a *Chicago Electric Power Tools 4 in. Hobby Table Saw*. Both are inexpensive and available at Harbor Freight. The two saws were stacked base-to-base on a rotating wood plate on top of a wood cube frame such that they could be rotated in place to use



Vince Choraszewski with desktop Cutoff Saw



Vince Choraszewski Demonstrating Stacked Base

either saw when it was located on top of the cube. Vince developed this design as a matter of convenient access to both tools combined with limiting storage space. *Wood* magazine has expressed interest in including the idea in a future issue.

Cabinet or card scraper sharpening is often a challenge for woodworkers. **Kevin Goulet** demonstrated another fresh approach using a *Taylor Toolworks* (<https://taytools.com/>) *Cabinet Scraper Preparation Kit* (\$35), containing everything you need to prepare a cabinet scraper (less scrapers and burnisher). Included is the hardware to make a twin jaw scraper vise, magnets to make a scraper handle, spring steel strips to quickly set the protrusion of the scraper edge from the vise, mill file, two half sheets each of 80- and 40-micron PSA lapping film for honing and polishing the scraper edges, the float glass for the films, and a



Kevin Goulet with Scraper Burnisher

non-slip pad. Also separately from Taylor he showed the amazing **Accu-Burr™ Dual-Sided Carbide Scraper Burnisher**, a collaboration of Blackburn Tools, Union Manufacturing and Lakeshore Carbide. The heart of the Accu-Burr™ is a 3/16" diameter carbide rod with three precision shaped

V-grooves of slightly differing angles (5°, 10°, and 15°) ground in the center of the rod. These grooves create burrs on both sides of any scraper edge **in a single pass**.

The 5° groove makes fine hooks for refining finishes or when working with thin veneers, the 10° groove (most common) makes medium hooks for everyday use, and the 15° groove makes heavy hooks for shaping wood or removing finishes. A detailed explanation of this new burnisher is on the Taylor Toolworks site. The burnisher comes either with no handles, or only brass tube clamps as small handles, so some woodworkers are wood-turning their own add-on handles. This burnisher is making big waves in the woodworking community.

Larry Last exhibited two very useful augmentations for the workbench. The *Moxon Vise* is a long twin-screw vise affixed to the edge of a bench, the vise having been documented in a 17th century book by

Joseph Moxon. There is no center screw so you can clamp long objects like case sides, and it sits on top of your workbench so it brings the work piece up higher



Larry Last with Moxon Vise

where you can see it better. It is often used to aid the cutting of dovetails on long wide boards such as drawer fronts and sides. Larry had the great idea to install springs on the twin

screws internal to the jaws such that the jaws are automatically held open during adjustment, a real convenience not available on the original vises. Larry then showed his version of a *mini bench-top workbench*, generally called a "bench-on-bench." This little bench, which in use is clamped to a larger host bench, has its own dog-holes, used in concert with a small end-vise mounted on the little bench. The

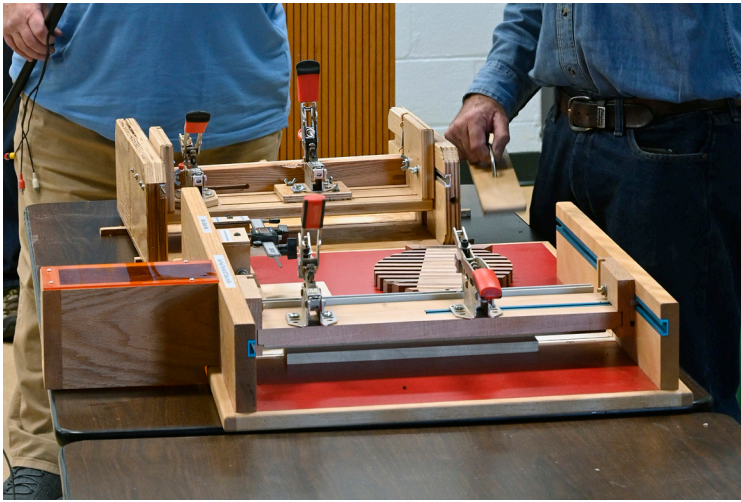


Kevin Goulet Demonstrating Cabinet Scraper Prep Kit



Larry Last with Bench Top Mini-Bench

bench brings workpieces up higher, saving the aging backs and weakening eyes of maturing woodworkers, of which our Guild has a few.



Ken Wolf's Precision Wood Strip Cutting Jig

Long-time members of our Guild know that the master jig builder of all is member and past President **Ken Wolf**, whose shop-built jigs are icons of function and design and are beautiful to behold. So Board member David McCagg did us a huge favor by filling in for Ken to show and explain Ken's *precision wood strip cutting jig*. (Ken had a meeting conflict and was unable to attend.) Ken's precision strip cutting gauge was originally designed by Ken to enable making of precision wood splines in support of the Guild's hospital memorial-box-making program to overcome a miter joint design deficiency in an earlier version.

The jig operates as a table saw sled but has fences and other features to enable safe cutting of multiple thin strips of the same precise dimension. The sled has auto-adjust lock-down clamps to press down a wood "guillotine" which holds the stock for cutting in a safe manner. The width of strip made is precisely set by use of a built-in digital caliper. And a blade extension box with a red transparent cover provides safety as the table saw blade exits the main body of the sled. Finally, use of red melamine plywood as the base makes for a beautiful and minimum friction input stock surface. All of this makes for a highly functional jig which is also a pleasure to use and view.

David also demonstrated that a fully-functional strip-cutting jig can be made with less effort and expense by recycling lumber and omitting some of the adjust-

ment features of Ken's original jig. He brought his "frugal" version to display, and showed a fish shaped trivet made from strips produced by his jig. Such a jig can very well serve the needs of many projects.



Thin Wood Strip Trivet

We thank all the presenters for sharing their jigs and expertise. And give our appreciation to President **Jerry** for coordinating the presentations. Thanks also is due to David McCagg and **Kevin**

Goulet for the video projection of the presentations, and to **Dan Holowicki** for the photographs.

- Dale Ausherman

GLENN WING

POWER TOOLS

33656 Woodward Ave.
Birmingham, MI 48009

(248) 644-0444
(248) 644-5790 Fax
(800) 821-5177 (US)
(800) 448-1572 (MI)

Jeff Wilmot

ODETTE FERGUSON
SALES REPRESENTATIVE
E-mail: odette@sawspec.com



10555 Shook Rd. P.O. Box 74438
Romulus, Michigan 48174-0438
www.sawspec.com

Your single source for all
your sawing needs...from
coolants to machinery

Voice
800-SAW-SPEC
800-729-7732
734-941-2824
Cell
734-740-1691
Fax
734-941-2883

Member of
Industrial Distributors Association
International Saw & Knife Association

Michigan Naturals

DECORATIVE CABINET HARDWARE

www.MichiganNaturals.net

Ann Ivory
313-506-1963



News from the Toy and Box Committee

A Great Success!

Ron, myself and the entire MWG Board of Directors wish to thank all of the toy and box makers for your support last year where we once again exceeded our goals for toys delivered to Children's Hospital. On Dec 6, 2023, Ron and I delivered a total of **480 toys, 13 memory boxes and 23 plain/tool boxes** to Children's Hospital. We had eleven repeat makers; **Ragnar "Berg" Bergethon, Vic Bonaro, Bill Damico, Dan Holowicki, Jim Kudej, Meg Larson, Larry Last, Dave McCagg, Dave Nordstrom, Ron Ross and Steve Vaertan**. There were five first time makers this year; **Jared Fink, Adam Horsburgh, Tim Kramer, Lou Minna and Charles Reavis**. Again, a big Thank-you to all the makers.

Now a few highlights.

Bill Rigstad's tradition of tool box totes was updated with CNC laser engravings. The plans for this tool box should be on the website by the time you read this article.



Bill Rigstad's updated toolbox

Dave Nordstrom did a very nice farm tractor trailer and Model T car.



Dave Nordstrom's Tractor and Model T

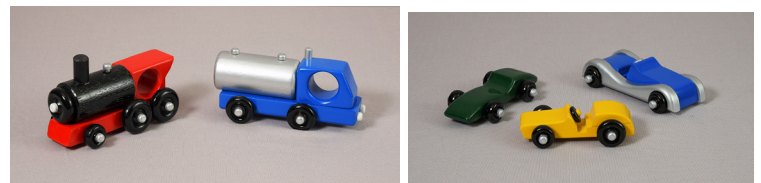
First time maker **Lou Minna** did a number of airplanes using the plans on our website as



Lou Minna's Airplanes

a starting point. With a few modifications he was able to make the build easier.

Vic Bonara made many of the trucks, locomotives and cars he has done in the past, in brightly painted colors.



Vic Bonara's Trucks, Locomotives, and Cars



Chuck Reavis, with the help of a number of seniors at the residence where his father lives, delivered a number of the 1940's style Ford car from our website plans.



Chuck Reavis's (with help from seniors) Ford Coups

Meg LarSEN did a fine job on the VW cars from our website plans.



Meg LarSEN's VW Bugs

Larry Last made several boxes, some having a wooden hinged lid.



Larry Last's Wooden Hinged Box



Jared Fink's Dovetail Sliding Lid box

First time maker **Jared Fink** made some very nice dovetailed boxes with sliding lids.

I am purposely omitting some of the other makers and their items as they have entered those in the toy and box contest. This year's competition will be done at our January meeting which will be after the January newsletter will be published. More on those items in the February article.

As has always been the policy, the Guild will provide standard wheels (1", 1 1/4" or 1 1/2" dia) along with the new treaded wheels, 1/2" OD nylon washers and 1/4" dia. wheel pegs free of charge to any member who wishes to make toys for this program. We do have a fair supply of the treaded wheels at this time and should they be a big hit, we will arrange to have more in the years to come. Any of these items can be obtained by contacting **Ron** or **Dan**

The Guild still has an inventory of non-standard wheels and other toy parts that have been recently categorized. There has been a good response to these non-standard items and once they are gone, they will not be replaced.



We do bring a small amount of select items from this stockpile to Guild meetings on a regular basis. However, if you have a specific need, please contact **Ron** or **Dan** for the amount and to arrange delivery.

Once again, a great big thank-you to those who contributed to last year's success.

For further information on our toy/box program or request wheels and axels, please contact

Ron - 734-812-5531 - rross1508@gmail.com

Dan - 313-702-5836 - dan56laura@att.net



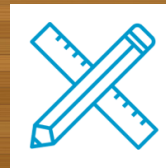
Michigan Woodworker's Guild yearly dues are now payable.

Feel free to get on-top of the renewal process by paying your \$25 yearly dues Early and Often.

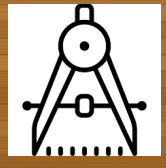
Thank you to everyone who responded to the email message and made payments through the MWG website as well as by sending your dues payment to the membership chair.

Note: A membership renewal form can be found on the website dropdown menu under "Membership - Payment/Renewals"

You can find the MWG **Ken Wolf's Thin Strip Sled** plans on the MWG website with the following link:
https://michiganwoodworkersguild.com/wp-content/uploads/designs/Ken_Wolf_Thin_Strip_Sled_7-9-23.pdf



**MWG
DESIGN
CENTER**

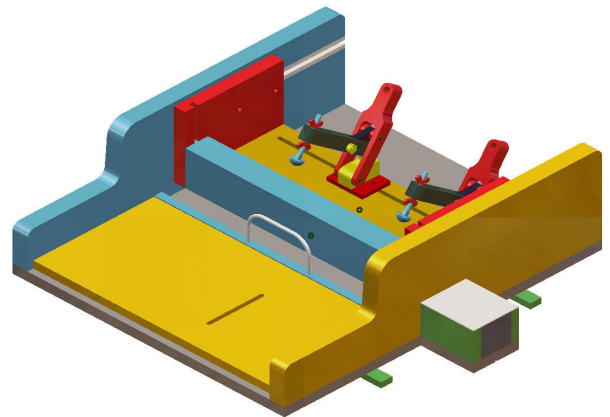


From the Editor

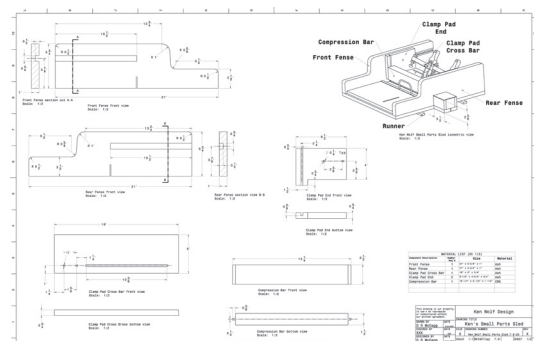
In **Dale Ausherman's** excellent meeting review, he described master jig maker **Ken Wolf's** thin strip sled.

To support Dale's description, the MWG Design Staff has been busy developing a CAD database with subsequent drawings for Ken's sled. The drawing for this sled can be found at the link show below.

Everyone is encouraged to make this sled and then send your feedback to the MWG Newsletter Editor.



Ken Wolf's Thin Strip sled Cad image



Ken Wolf's Thin Strip Sled drawing



NEEDLE-NOSE SPRING CLAMP

• Powerful springs and unique design provide focused pressure

\$2⁴⁹

SMALL

SKU: 64124

\$3⁹⁹

MEDIUM

SKU: 66285



**SAVE OVER
50%**

\$6⁹⁹ BD. FT.
WHITE OAK R/Q
S2S 13/16"

Reg. \$14.99 Bd. Ft. SKU: 14837

While Supplies Last



**HAVE YOU
SEEN THIS?**

\$9⁹⁹

**CABINETMAKER'S
PENCIL SET**

Reg. \$17.99 SKU: 33140



**SAVE OVER
40%**



ANNUAL INVENTORY REDUCTION SALE PRICING VALID 12/29/2023-1/24/2024

43291 Crescent Blvd. • Novi, MI 48375 • (248) 543-5110 • Rockler.com

Please see Rockler.com for updates.

For membership information contact

Dave McCagg at: d2mccagg@provide.net

For name tags, sign up with Ed Stuckey at a regular meeting.

Executive Board Members / Committee Chairs

Jerry Romito.....	President.....	248-475-5976
Dan Holowicki.....	Vice President.....	734-283-9898
Ed Stuckey.....	Treasurer.....	313-345-3671
John Dolinsky.....	Secretary.....	734-945-6461
Dan Holowicki.....	Officer at Large.....	734-283-9898
Tony Gigliotti	Officer at Large	248-853-8349
Bill Gayde	Officer at Large	248-859-3949
Ron Ross.....	Officer at Large.....	734-812-5531
Rich Herbert.....	Officer at Large.....	248-628-0644
Ragnar Bergethon...	Officer at Large.....	248-608-8436
Ken Wolf.....	Officer at Large.....	734-981-3423
Dave McCagg.....	Officer at Large.....	734-482-6764
Ragnar Bergethon..	Website	248-608-8436
Dave McCagg.....	Newsletter Editor.....	734-482-6764
Dave McCagg.....	Membership.....	734-482-6764
Larry Last..	Programs/Website Calendar....	248-207-9386
Bob Mills.....	Mentoring.....	248-535-6718
Kevin Goulet	Camera Chair	248-672-5341
Fred Ball....	Web Site Calendar (Backup).....	248-681-3108
Ron Ross.....	Toy Program.....	734-812-5531
Kevin Guolet.....	Officer at Large.....	248-672-5341
Kevin Guolet.....	Food Coordinator.....	248-672-5341

6 MILE RD.

George's Senate Coney
Island Restaurant
39450 Dun Rovin Dr.
Northville, Mi. 48168

5 MILE RD.

HAGGERTY

I-275

MAP TO GEORGE SENATE RESTAURANT
HAGGERTY BETWEEN 5 & 6 MILE

Next MWG Luncheon: (Coordinated by TBD)

Thursday, 25 JANUARY 2024 at 10:16 AM
(Due to Christmas, no December lunch)