



MICHIGAN WOODWORKER

michiganwoodworkersguild.com



Michigan Woodworkers' Guild (est. 1981) December 2025 Vol. 46 No. 1

When / Where:

SUNDAY, JANUARY 12, 2025

(Socializing Starts at 1:00 PM and Business meeting at 2:00 PM)

In-Person Meeting:

Antique Tools
by **Cliff Durand**

Meeting Coordinated by: Jerry Romito



IN-PERSON MEETING AT:
Livonia Senior Center

PAY YOUR 2025 MWG DUES
TODAY! (SEE PG 2)

January 2025:

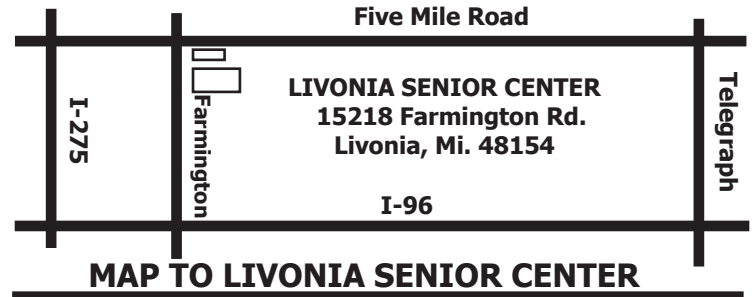
Start the year right with **Cliff Durand** as he discusses and demonstrates old hand tools. The **January 12th 2025** socializing meeting starts at 1:00 pm. Coordinated by **Jerry Romito**, the meeting is held at the Livonia Senior Center.

FEBRUARY 2025:

MWG Officer at Large, Ron Ross has coordinated a demo from Rockler to show us their new products. See the new tools and jigs that they have for us. Everything starts at **1:00 PM, Feb. 9th 2025** at Livonia Senior Center.

MARCH:

Coordinated by **Larry Last, Brian Ostrander** from the Woodcraft store in Canton will update us on some of the new technologies available at Woodcraft. Everything starts at **1:00 PM** at the **Livonia Senior Center** on **March 9th, 2025**.



Antique Tools -
The Original Cordless Tools
by **Cliff Durand**

January 12th

This will be an interesting meeting where **Cliff Durand** discusses and demonstrates old hand tools.

Look forward to discussing this since many of us use both power and hand tools for our projects.



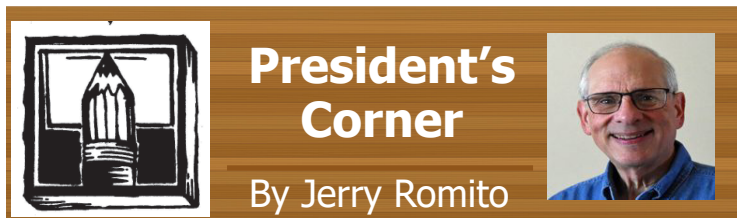


As of January 2025 your Michigan Woodworkers' Guild yearly dues are now payable.

Feel free to right away complete the renewal process by paying your \$25 dues **Early** and **Often**.

A membership renewal form can be found on the website dropdown menu under "**Membership - Payment/Renewals**" or by selecting this link.

https://michiganwoodworkersguild.com/wp-content/uploads/membership/2025_MWG_Membership_Application_FORM_12-26-24.pdf



President's Corner

By Jerry Romito

January 2025

The good news for 2025 is that our program calendar is set for the entire year. Below is a summary of the schedule. The specific details of each program will be emailed to all members each month and published in the monthly newsletters. They are also all listed on our website.

- Jan 12 – Antique Tools by member Cliff Durand
- Feb 9 – New Rockler Products by Rockler
- Mar 9 – New Woodworking Technologies by Woodcraft
- Apr 13 – Furniture Design Process by profes-

You can find the **Gary Rogowski** special one-hour Zoom presentation on cutting dovetails and finger joints with the following link:

https://us02web.zoom.us/rec/share/6Tsr8fgFQmD76f54qwbGf5U6Zv_zM10_7WaQibcks0HiyaOfCSEXWo2JiW7DaadY.NGn4Dx2Hnn9pfMZj

sional Joe Beam

- May 18 - Veneering by member Steve Stram
- Jun 7 – Tour of Stahl's Auto Museum in Chesterfield
- Jul – No meeting
- Aug 10 – Picnic at VFW Park in Royal Oak
- Sep 14 – Showcase of Skills by Members
- Oct 11 – All day Saturday seminar "Furniture Refurbishing & Repair; Fixing Mistakes" by professional Tim Puro
- Nov 9 – Jigs & Fixtures by Members
- Dec – No meeting

On another item, I had announced that professional woodworking instructor **Gary Rogowski** gave us a special one-hour Zoom presentation on cutting dovetails and finger joints on December 11. Only 10 of you watched it, but you can still see the recording by clicking on the Zoom link shown below, and entering the password. The link below will be good until **January 10, 2025**.

Passcode: &#e%5Ckd

I wish a happy new year to all of you.

Jerry





MEETING REVIEW



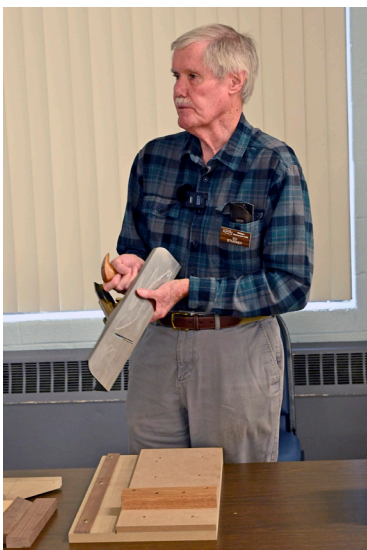
By Dale Aushman

MWG Meeting Review
Jigs and Fixtures
Livonia MI, 11 November 2024

Our November 2024 Meeting was the Annual Jigs and Fixtures Meeting. President **Jerry Romito** solicited the presentations from members, and organized and ran the session as “MC.” We had seven presenters, many of which presented more than one jig.

Thanks to the hard work of **Kevin Goulett**, a video of the Nov. 10 Jigs and Fixtures meeting is now posted to the *Michigan Woodworkers Guild - meeting video channel* on YouTube. www.youtube.com YouTube Channel name: *Michigan Woodworkers Guild - meeting video*. Be sure to subscribe to this channel. Direct address to view this specific video: <https://youtu.be/kpvwnnT8rZU?si=azgHREDEtu5TBN-g>

To start the meeting **Ragnar Bergethon** (Berg) and **Ed Stuckey** teamed up to show different approaches to making and using a shooting board, a fixture for precisely trimming a work piece using a plane. But



Ed Stuckey Demonstrating
Shooting Board



Ragnar Bergethon Showing
Shooting Board

first Berg showed an unusually long bench hook with its cleat on the long side so that it can be placed in a vice to support the user planing from right or left. Alternatively a conventional (short) bench hook's cleat is usually pressed against the bench, with the work piece held against the fence, while the plane moves from front to back.



Shooting Board

Berg spoke to two shooting board versions, *traditional and vertical miter*. Traditional boards are used for trimming end grain at 90 or 45 deg. angles, with the plane on its side and the work piece held against either a 90 deg. or 45 deg. fence. So either cut is normally perpendicular to the sides of the boards, such as the case when mitering a picture frame. The fence can be set at any angle desired. He also mentioned *vertical miter* shooting boards, whose purpose is mitering the long edges of wide boards or panels, such as box sides. In this case the plane is run along a tilted track while the work piece is laid flat on a wider reference panel. Both of Berg's boards have adjustable and replaceable sacrificial stops for when they get trimmed away by the plane in use. Both shooting boards are made of Baltic birch plywood with hardwood stops. They can be used with any plane whose sides are 90 deg. to the sole. Bert typically uses a Lie-Nielsen No. 5 Jack plane (\$385).



Ed Stuckey's shooting board is made to use a special, single-purpose *shooting plane*, the *LN No. 51 shoot board plane*, which has a large side perpendicular to the extra-long base, with the plane blade cutting at a skewed angle to trim miters and other end grain cuts.

(<https://www.lie-nielsen.com/products/no-51-shoot-board-plane->)

The skewed cut is exceptionally effective. Lie Nielsen provides free online plans for making a shooting board specifically for the LN51, plans from which Ed made his board shown at the meeting. This plan recommends MDF for the board and fixtures, and hardwood for the stops and fence. The plan also contains fixtures for a 45 deg. miter (L or R) as was shown by Ed. There is also 45 deg. miter "Bird House" Fixture, which miters small (only) box sides in the fashion of the vertical shooting board shown by Bert. The LN 51 sells for \$650.



Chuck Andrews with Multi-Body Paint Jig

Next up was **Chuck Andrews** who showed jigs for use in painting Guild program toy cars and parts. He showed a toy car and toy SUV he built and painted. Chuck shared three jigs with us. The first was a simple drying rack with several wire hangers. He puts a wheel on each hanger, dips the wheel in and out of thinned black shellac, then waits about 30 sec to

catch the last drip with a paper towel, The part then goes back on the rack to dry completely. The rack can be used for spray painting as an alternative method. The 2nd jig was a simple small square of hardboard pegboard, in which multiple wheels on axels can be placed for spraying. His 3rd jig was the **Ken Wolf/Dave McCagg** - designed *Toy Body Coating Fixture* used to coat toy bodies in support of the Toy program. Once a car is mounted the fixture turns to present all sides. This design is on the website under the *Programs/Resources* tab, then *Design / Project Center* menu. (Editor's note: here is a link to the plans https://michiganwoodworkersguild.com/wp-content/uploads/designs/Ken_Wolf_Toy_Body_Painting_Fixture_12-31-21.pdf)

Chuck also builds a larger version with mounts to spray three cars at one time.



Dans Drilling Jig

One of the leads for our toy program, **Dan Holowicki**, also discussed a jig for use in the program. Made from lumber scraps, the fixture attaches to a drill press table via two slots, has two sideways adjustable fence grips, plus a forward and back gripping block. All the grips have rubberized cork gripping surfaces to avoid damage to the car parts. Dan has used this jig to hold car bodies for drilling holes for axels, and for small parts such as handles for gift sewing boxes. A photo showed its use in drilling wheel wells on the sides of toy cars using a Forstner bit, all per-



Jerry Romito With Tapering Jig

fectly positioned for multiple cars.

Next was **Jerry Romito's** turn. He started with a fence extender for his table saw, to provide additional stability when ripping long boards. It is about five feet long, to extend a three foot fence. It is constructed of two $\frac{3}{4}$ inch MDF boards connected with six bulkheads to make the extension exactly three inches in outside width. This enables the saw-top fence placement gauge to still function effectively. The fixture simply clamps to the original fence. There are also some sacrificial blade cut-ins to enable one to imbed a saw or dado blade for flush cutting as required.

Next Jerry showed a table saw jig for cutting spline slots for box corner miters. It had two guides which run in the table saw miter slots. Jerry recalls he used a plan from a Doug Stowe box-making book.

The spline jig was followed by a well-made tapering jig. Made with several T-tracks for safe and secure set up, it looks much like the commercial Rockler design, as well as plans that are offered on Etsy. Jerry made this jig after about 30 years of using the very unsafe aluminum two-leg jigs one sees offered in most tool stores. His jig's base is wide enough that it can be used to put new edges on wide boards with

irregular edges.

Jerry completed his presentation by showing his *Sjobergs Smart Workstation Pro Vise*. (\$280 at Rockler) He built his current workbench without fancy vises or dog holes over 30 years ago as a stop gap way to get started in woodworking, thinking he would upgrade as he progressed. But of course the upgrades never happened due to the press of life. The Sjobergs is a small bench on bench, but includes a tail vise and dog holes. With the dog holes Jerry can now use the holdfasts he long admired from afar. The Sjobergs clamps to a current bench to bring these long sought features into Jerry's woodworking. It also has utility as a removable dovetailing vise, as it can raise your work up to a more comfortable height for sawing pins and tails. And thanks to the 1-5/8" thick solid beech top it will meet the demands of woodworking and is attractive as well. When deployed on a current standard bench, the vise may be a little higher for planing than desired by some woodworkers, but the workstation can also be clamped to a pair of lower sawhorses



Jerry's Sjobergs Smart Workstation Pro-Vise

as well.

What would a Guild jigs and fixtures meeting be without highly innovative solutions designed by our master jig builder **Ken Wolf**? Again this year he did not disappoint. For years Rockler has been selling their PVC Ceiling Track System. Paired with the appropri-



Ken Wolf Showing Overhead Rail System

ate rolling trolleys and hooks, they keep your cords and hoses off the ground, and away from bench top corners that would otherwise catch on them and interfere with your work. Ken built an improved system using 1 ½ in. white PVC pipe with a ¼ in. slit running down the underside. He built a special jig to cut the slit straight and exactly down the middle. Then he built his own ultra-high molecular weight (UHWM) sliding dolly with bearing upper wheels to easily slide back and forth down the slot. The dolly has attached metal rings below to carry electric cords and vacuum hoses.



Ken's Overhead Rail Carriage

Ken is very impressed with the Micro Fence precision edge guide system for handheld routers, due to their precise adjustment hardware. (<https://microfence.com/>) The Micro Fence system mates with many different router bases. As routing guides Ken uses long extruded aluminum bases originally used for track saws and the like. Amazon has many generic track guide rails of various lengths and adapters. He makes custom wood and threaded bolt interfaces to the tracks, using Teflon tape on rubbing surfaces.



Kens Router Sled

He also showed a large shop-made UHWM router base, with a large heavy trailer hitch chrome ball as a handle. The handle also serves as a counter weight to keep the router from tilting should one accidentally lose his grip. He got this inexpensive trailer ball from Harbor Freight.



Ken's Dowel-Splined Memory Box



Ken's Dowel-Spline Fixture



Ken had time for one more jig, this one being a “cross-miter dowel fixture.” This provides a means for creating cross dowel fasteners for the edge miters of small boxes. This adjustable fixture is clamped on the box and aligned with location marks, while a fixed drill guide guides a drill bit at 45 deg. through both sides of the miter. Ken uses **Lee Valley** drill guides (1/8”, 3/16”, 1/4”, 5/16”, 3/8”, plus metric sizes), which I have confirmed are still available. **Rockler** sells a “Corner Key Doweling Jig with set of 3 drill bits” (\$89) which performs this same function. The 6” long drill bits are 3/8”, 1/4”, and 1/8”. At the time of his briefing Ken thought the smallest dowel size supported by the Rockler jig was 1/4”, but apparently that has changed. I believe the longer 6” bits are supplied to

Over the years Larry has made hundreds of historically correct wooden sash windows for various individuals and organizations and is thus a true expert on the subject. The windows are typically multi-pane

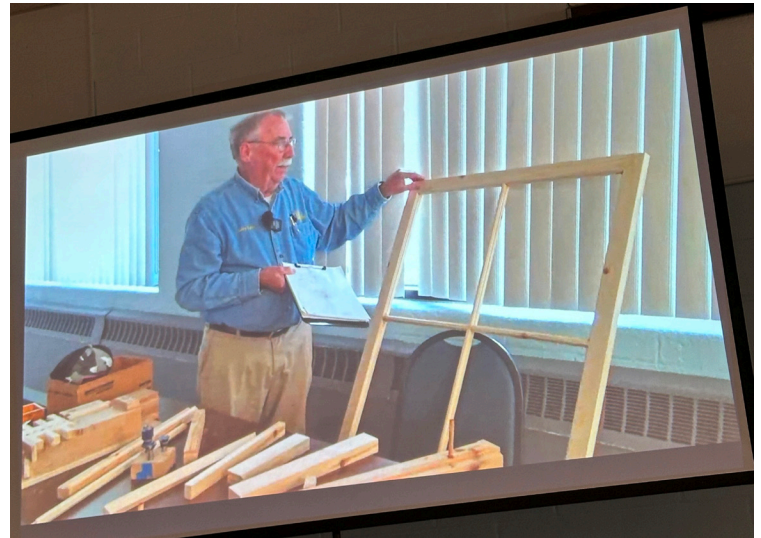


Woodsmith Finger-Joint Jig in Action

support thicker box side dimensions.

Larry Last wrapped up the meeting with discussion of a box-making jig, along with jigs for use in making sash windows. The box making jig is very simple, with alternating “keys” mounted on top of a piece of 4X4. The box ends are clamped to the 4X4 and registered up against the keys. A router with a suitably long flush trim bit is used to cut out the fingers on the box side ends. Each pair of opposing slot keys can be of different widths for a decorative effect. The geometry of the jig is such that the finger cutouts have flat clean bottoms. Larry made his jig on his own, but **Woodsmith** sells a plan (\$12.95) for this jig.

(<https://www.woodsmithplans.com/plan/finger-joint-jig/>)
On this site are videos of the jig in action.



Larry Last With Cope and Stick Window Frame

windows, and are made with “cope and stick” window sash router bit sets. The vertical sides of the frame are stiles, while the horizontal sides are rails. The parts of the interconnecting grid for panes (called lights) are the muntins. Larry showed various jigs he uses to safely hold the parts for routing with these bits, one for the larger parts (stiles and rails), and another for the muntins. Larry showed the plan sketches he makes to guide the process and set the required dimensions of all parts. He showed the sash assembly



Larry Showing Window Style Routing



process as well.

Larry has made sash storm windows for people who own homes in historic districts, and is a leader of a volunteer group that makes and repairs windows for the Henry Ford Piquette plant, which has 355 sash windows. He also has made many windows for the buildings in Mill Race Village, Northville. He has promised the Guild to organize a future meeting focused on demonstrations of all aspects of sash window making.

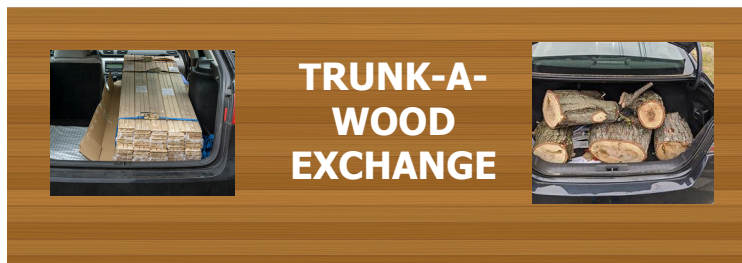
Thanks to **Jerry Romito** for organizing the meeting, and to all the presenters who shared their jigs and expertise. Also thanks to **Kevin Goulett** and **Dave McCagg** for the video work, and to **Dan Holowicki** for the photos. Special thanks to Kevin for setting up the YouTube recording of the meeting and posting in our website.

- Dale Ausherman



- **Woodworking, it's not a hobby, it's an addiction.**
- **Will work for more tools!**
- **Every woodworker needs a fireplace.**

These phrases are provided purely for your humorous enjoyment. Feel free to send your favorite woodworking pun to the MWG Newsletter Editor for possible future publication.



Do you have some wood that hasn't seen the light of day in decades?

Do you have cut-offs from your last project which are just too good for the burn pile?

Do you have pieces that you would like to donate to the MWG Toy Program?

Continuing this year at each Member meeting, we invite everyone to bring their wood pieces for sale, exchange, or give-away.

Just open your trunk in the parking lot to let everyone see the treasures you have **(Please keep these pieces outside).**

Who knows, you probably will go home with nothing more than what you came with or some extra "got-to-have, never been seen before" samples of your own.

ODETTE FERGUSON
SALES REPRESENTATIVE
E-mail: odette@sawspec.com




10555 Shook Rd. P.O. Box 74438
Romulus, Michigan 48174-0438
www.sawspec.com

Your single source for all
your sawing needs...from
coolants to machinery


Voice
800-SAW-SPEC
800-729-7732
734-941-2824
Cell
734-740-1691
Fax
734-941-2883

Member of
Industrial Distributors Association
International Saw & Knife Association





**CHILDREN'S
HOSPITAL
MWG PROGRAM
UPDATE**



From Ron and Dan

News from the Toy and Box Committee

We Did it Again!

Ron, myself and the entire MWG Board of Directors wish to thank all of the toy and box makers for your outstanding support of the *Children's Hospital Snow-pile Program*. Once again we exceeded our goals for toys delivered to Children's Hospital. On Dec 10, 2024, Ron and I delivered a total of **478 toys, 10 memory boxes and 20 plain/tool boxes** to the Hospital. Participants in this years program were:

Chuck Andrews, Ragnor "Berg" Bergathon, Vic Bonora, Bill Damico, Jared Fink, Dan Holowicki, Jim Kramer, Meg Larsen, Larry Last, Dave McCagg, Lou Minna, Dave Nordstrom, and Ron Ross.

Perhaps one of our most prolific toymakers over the years has been **Bill Damico**. He exceeded all expectations again this year by building and donating 200 toys! Again, a big Thank-You to all the makers and to the Board of Directors. Without your support we could not have done this.

A few sample pictures of the toys and boxes delivered this year are included in this article. A more comprehensive portfolio is located in the Photos section of our website.

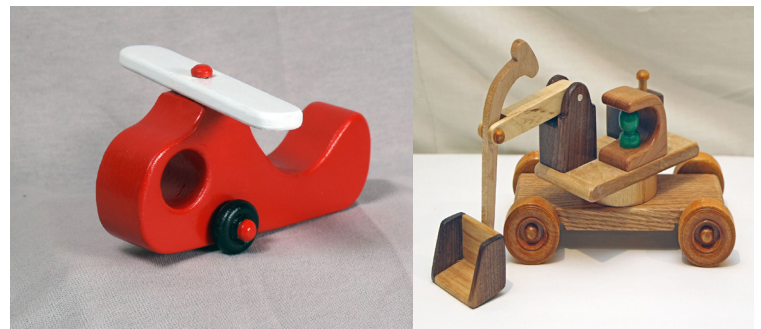
As far as toys collected, cars (170) and trucks (255) are still the majority.

Some very nice helicopters (following Guild plans) were made as well as new designs of construction equipment (bulldozers and excavator/diggers).



**Dave Nordstrum's
Model T**

Bill Damico's Trucks

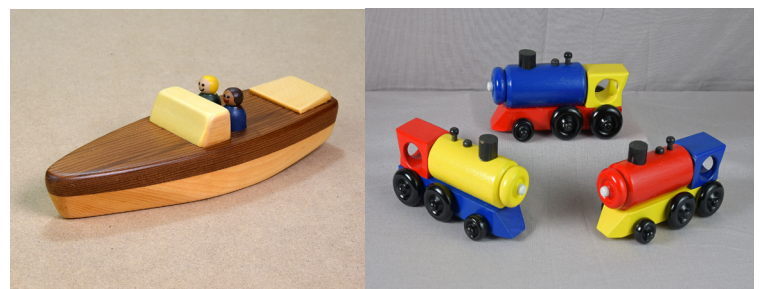


Lou Minna's Helicopter

Berg's Excavator

We also had some very nice boats, some colorful trains and articulated pull-toys.

I'm confident these will all be enjoyed by children throughout the Hospital campus. A significant



Speedboats

Vic Bonora's Trains



Ron Ross's Pull Toys

amount of boxes were delivered which the Hospital Staff is very appreciative of. The Staff has indicated to us that there is still a need for memory boxes, a sad but necessary comfort to those at their time of loss.

As has always been the policy, the Guild will provide standard wheels (1", 1 1/4" or 1 1/2" dia) along with the new treaded wheels, 1/2" OD nylon washers and 1/4" dia. wheel pegs free of charge to any member who wishes to make toys for this program. We do have a fair supply of the treaded wheels at this time and should they be a big hit, we will arrange to have more in the years to come. Any of these items can be obtained by contacting Ron or Dan.



Jared Fink's Boxes



Rick Stewart's Boxes

The Guild still has an inventory of non-standard wheels and other toy parts that have been recently categorized. There has been a good response to these non-standard items and once they are gone, they will not be replaced.

- 1 3/4", 2", 2 1/4", 2 1/2", 2 3/4" and 3" diameter standard style wheels
- 1 3/4", 2", 2 1/4", 2 1/2" and 2 3/4" diameter treaded tire style wheels
- 2" and 2 3/4" diameter wagon style wheels
- 1 1/4", 1 1/2" and 2 1/4" diameter flanged style train wheels
- Wood shapes such as acorns, beads, balls, caps and discs
- Large and small shaker style pegs
- Three sizes of wood peg people
- Steam engine/steam train parts and smokestacks

We do bring a small amount of select items from this stockpile to Guild meetings on a regular basis. However, if you have a specific need, please contact Ron or Dan for the amount and to arrange delivery.

Once again, a great big thank-you to those who contributed to last year's success.

For further information on our toy/box program or request wheels and axels, please contact:

Ron - (734) 812-5531 - ross1508@gmail.com

Dan - (313) 702-5836 - dan56laura@att.net



MWG MEMBERSHIP

Just a reminder, Michigan Woodworker’s Guild yearly dues will become payable January 2025.

Feel free to get ahead of the renewal process by paying your \$25 dues **Early** and **Often**.

A membership renewal form can be found on the website dropdown menu under “Membership - Payment/Renewals”

MWG DESIGN CENTER

From the Editor

In support of the MWG Toy program, the design staff has steadfastly been at work developing new designs. The latest is a bulldozer inspired by our very own toy coordinator, **Dan Holowicki**.

The drawing for this new toy project can be found on our website at the links shown below. Be the first on your block to make several then donate them to the MWG Children’s Hospital Toy program.

Everyone is encouraged to make this new project and then send your feedback to the MWG Newsletter Editor.

GLENN WING

POWER TOOLS

33656 Woodward Ave.
Birmingham, MI 48009
(248) 644-0444
(248) 644-5790 Fax
(800) 821-5177 (US)
(800) 448-1572 (MI)

Jeff Wilmot



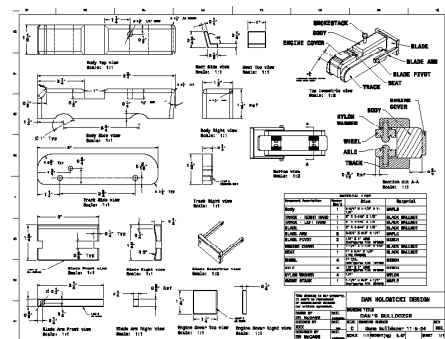
Dan’s Bulldozer

MARSH POWER TOOLS
SALES AND AUTHORIZED FACTORY SERVICE

20579 Middlebelt
Livonia, MI 48152
(248) 476-7744

7187 Grand River Ave.
Brighton, MI 48114
(810) 220-1122

Fax: (248) 476-1090



Dan’s Bulldozer Drawing

You can find the MWG **Dan’s Bulldozer** plans on the MWG website with the following link:
https://michiganwoodworkersguild.com/wp-content/uploads/toys/Dans_Bulldozer_12-1-24.pdf



For membership information contact

Dave McCagg at: d2mccagg@provide.net

For name tags, sign up with Ed Stuckey at a regular meeting.

Executive Board Members / Committee Chairs

Jerry Romito.....	President.....	248-475-5976
Dan Holowicki.....	Vice President.....	734-283-9898
Ed Stuckey.....	Treasurer.....	313-345-3671
Open.....	Secretary.....	
Dan Holowicki.....	Officer at Large.....	734-283-9898
Tony Gigliotti	Officer at Large	248-853-8349
Bill Gayde	Officer at Large	248-859-3949
Ron Ross.....	Officer at Large.....	734-812-5531
Rich Herbert.....	Officer at Large.....	248-628-0644
Ragnar Bergethon...	Officer at Large.....	248-608-8436
Ken Wolf.....	Officer at Large.....	734-981-3423
Dave McCagg.....	Officer at Large.....	734-482-6764
Ragnar Bergethon..	Website	248-608-8436
Dave McCagg.....	Newsletter Editor.....	734-482-6764
Dave McCagg.....	Membership.....	734-482-6764
Larry Last..	Programs/Website Calendar....	248-207-9386
Bob Mills.....	Mentoring.....	248-535-6718
Kevin Goulet	Camera Chair	248-672-5341
Fred Ball....	Web Site Calendar (Backup).....	248-681-3108
Ron Ross.....	Toy Program.....	734-812-5531
Kevin Goulet.....	Officer at Large.....	248-672-5341
Ron Ross.....	Food Coordinator.....	734-812-5531



Next MWG Luncheon: (Coordinated by TBD)
Thursday, 23 JANUARY 2025 at 10:16 AM