



# MICHIGAN WOODWORKER

michiganwoodworkersguild.com



Michigan Woodworkers' Guild (est. 1981) June 2023 Vol. 44 No. 6

When / Where:

**SATURDAY, JUNE 3, 2023**

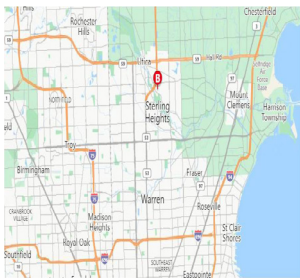
(Tour Starts: 1:00 PM, MWG Meeting: 12:30 PM)

Henry Ford II High School Woodshop

Tour Open To All Members And Guests

Coordinated by: Jerry Romito

**TOUR MEETING TIME: 12:30 PM**



**IN-PERSON MEETING AT:**

**11911 Clinton River Rd,**

**Sterling Heights, MI**

## **JUNE:**

Our annual guild field trip coordinated by **Jerry Romito** will feature **Chris Davis** showing us his Henry Ford II High School wood shop where he makes custom paddle boards for celebrities. Meet at the High School on **JUNE 3<sup>rd</sup> 2023 at 12:30 PM.**

## **July:**

**NO MEETING IS SCHEDULED FOR JULY**

Due to the summer shutdown, there is no July member meeting. All are encouraged to enjoy the month with family and friends as well as making more sawdust.

## **August:**

**Annual MWG Picnic- Aug. 13<sup>th</sup>, 2023**

**Where: Royal Oak VFW Park**

Bring a dish to Pass, Guild to supply chicken, pop, water, horseshoes

**Swap meet starts at 1:00 PM**



**MWG Annual Field Trip to:**  
**Henry Ford II High School Woodshop**  
**June 3<sup>rd</sup>**

Coordinated by **Jerry Romito** our 2023 annual guild field trip features a tour of the **Henry Ford II High School** wood shop with your fellow MWG members on Saturday, June 3<sup>rd</sup>, 2023. Hosted by shop teacher **Chris Davis**, the shop has become world famous for building custom paddle boards. This is not your traditional wood shop and you will want to see it. (See Page 9)



Henry Ford II High School



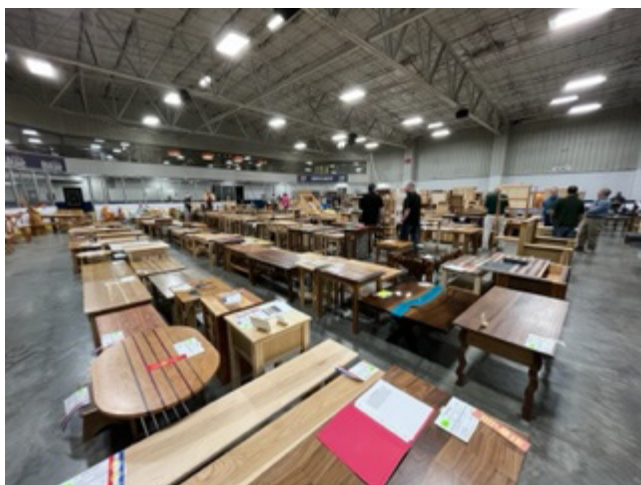
## President's Corner

By Jerry Romito



June 2023

I know that I told you about MITES (Michigan Industrial & Technology Education Society) in last July's newsletter, but I want to repeat some of it to tell you about my exciting judging experience again this year. MITES is a volunteer education organization that promotes students' skills and abilities that are taught in grades 6-12 industrial technology classes. They held their 95th Student Competition at the Wings Event Center in Kalamazoo on May 11. When they sent out a call for volunteer judges, I forwarded that to our MWG membership and was delighted to have four members join me as judges – **Dan Holowicki, Don Hess, Dan Pawlak, Jack Dalton.**



MITES 2023

There may have been 75-100 judges on-hand to cover the many thousands of student projects entered into one of 14 industrial arts divisions. Woodworking appeared to be the largest division. We were among the perhaps 30 judges for that division. This division was divided into 17 classifications, based on the type of wood project, which were each further divided by grade level. To qualify for submission to the state competition, each project had to have placed in the top

four for its category in its respective regional competition. I was also a judge at the earlier Region 7 competition, which covers my area of town in Oakland County. The judging criteria were craftsmanship, degree of difficulty, and optional project documentation.



MITES Projects 2023

As an aside, **Luke Barnett**, Executive Director of the *Sam Beauford Woodworking Institute*, was judging along with about 15 of his instructors and students. They made an impressively knowledgeable group. By the way, several of his people that I spoke with had high praise for the **Mike Holden** Library which we donated and said that it gets heavy use.

We were amazed at the high quality of the projects, regardless of grade. While many of the higher grade projects looked professional, even some 7th grade projects were worthy of attention.



MITES Project 2023





MITES CHAIR 2023

Our group judged as a team. We selected the top three finishers in several categories, which sometimes had 10 entries per category. Sometimes it was difficult to leave a great project out of the top three.

Since each project displayed the name of the student, school, and shop

teacher, it became quickly evident that certain shop teachers played a large role in the development of their students. Many of the top ribbons went to students of a handful of teachers. Judging then went on to select the first place in each classification and finally to the Grand Prize.



MITES Project 2023

The Grand Prize (Best in Show) went to a 10th grader, with a Sam Maloof-style rocking chair. **Luke Barnett**, who is a nationally renowned Windsor chair builder and instructor, said he would hire the student on the spot!

Here are some pictures to give you an idea of what was displayed.

Jerry Romito  
MWG President

**ODETTE FERGUSON**  
SALES REPRESENTATIVE  
E-mail: [odette@sawspec.com](mailto:odette@sawspec.com)



Your single source for all  
your sawing needs...from  
coolants to machinery

Voice  
800-SAW-SPEC  
800-729-7732  
734-941-2824  
Cell  
734-740-1691  
Fax  
734-941-2883

Member of  
Industrial Distributors Association  
International Saw & Knife Association



**MARSH POWER TOOLS**  
SALES AND AUTHORIZED FACTORY SERVICE

---

**20579 Middlebelt**  
**Livonia, MI 48152**  
**(248) 476-7744**

**7187 Grand River Ave.**  
**Brighton, MI 48114**  
**(810) 220-1122**

**Fax: (248) 476-1090**



**GLENN WING**  
POWER TOOLS

---

33656 Woodward Ave.  
Birmingham, MI 48009  
(248) 644-0444  
(248) 644-5790 Fax  
(800) 821-5177 (US)  
(800) 448-1572 (MI)

Jeff Wilmot



## MEETING REVIEW



By Dale Ausherman

### MWG Meeting Review

Pete Goddard, Vince Choraszewski, and  
Neal Hoegemeyer

Joys of Scroll Sawing  
21 May 2023

Guild members spent a beautiful spring afternoon on 21 May in Livonia with **Pete Goddard**, **Neal Hoegemeyer** and **Vince Choraszewski** explaining scroll saws, their uses, blades, and available models. They also reviewed the incredible projects they have undertaken on their own saws. The program was coordinated and introduced by **Ragnar Bergethon**. Berg also brought his own scroll saw as an example machine.



Ragnar Bergethon Introduction

fretwork we reach for the scroll saw. He then introduced three of our gifted scroll saw members who were to share their knowledge and skills in the many facets of scroll sawing such as Fret work, Inlays, Intarsia, Marquetry, and the making of puzzles, pictures, molding and curved work.

Berg kicked off the session with an introduction to the planned program. He related that as woodworkers we appreciate the abilities of the *tablesaw* to cut straight lines, and the *band-saw* to cut curved pieces, but when making very tight curves or doing

Former Guild President **Pete Goddard** started things off with an overview of scroll saw uses, tradeoffs between available types and features, and advice on evaluating one's needs for such a tool. His presentation and slides were basically a repeat of a talk he gave as part of a Member Demonstrations meeting we had in Livonia on 11 November 2018. It was good that he could repeat this important information because we have many new members in the last five years and if there are older members like me then a repeat is wholly necessary! And still Pete recommended Patrick Spielman's *The New Scroll Saw Handbook* as an excellent reference, available from Amazon in paperback.



Pete Goddard Discusses  
Scroll Saw Types

Pete said the blade drive types of powered scroll saws include strainer, constant tension, c-arm, parallel arm, and parallel link. He showed the mechanical design and example models of each type. Pete had pictures and mechanical drawings of each type, and I believe they are in the quoted Spielman book. It seems the most prevalent in shops today are the parallel link type, with the desirable characteristics of

near-zero blade front to back movement, near constant tension drive to minimize blade breakage, and reduced vibration. At least one model, Excalibur, allows for tilting the head instead of tilting table, which is important for inlay and marquetry where angled cutting is required. Two saws of the parallel link type are on the market, the DeWalt DW788 (about \$550-650) and the Excalibur (about \$900 - \$1,000). The more costly Excalibur has a tilting cutting head and a lifting top arm, which better facilitates the insertion of the blade in the multiple pilot holes associated with fretwork and marquetry. Pete does his work on a 20 in. Excalibur.

Pete listed the scroll saw features/accessories to



consider are; blade drive type (listed above), blade type (pin vs. plain end) and size/TPI, stroke length, throat depth, blade replacement ease, variable speed, vibration, tension adjustment, upper arm lift (Excalibur), power switch location, cut-line blower for dust, lighting, magnification, stand, and dust collection provisions.

Olson Scroll Saw Blade Thickness

Blade Size	Skip Tooth	Double Tooth	Precision Ground	Crown	Reverse Tooth
2/0	0.010	0.011	-	0.011	0.010
1	-	0.013	-	-	-
2	0.012	-	-	0.013	0.012
3	-	0.014	-	0.014	-
4	0.015	-	-	-	-
5	0.016	0.016	0.018	0.016	0.016
7	0.017	0.018	0.018	0.017	0.017
9	0.018	0.018	0.018	0.018	0.019
12	0.024	0.022	-	0.024	0.024

**Olson Blade Thickness Chart**  
vibration scroll saws are not particularly useful.

**Neal Hoegemeyer** followed Pete to discuss and show his scroll saw work implementing Intarsia and Marquetry. Neal uses a DeWalt DW788. Intarsia incorporates varied shapes, sizes, and species of wood fitted together to create a mosaic-like picture with an illusion of depth. The wood-worker cuts, shapes, and finishes each piece, and some areas of the pattern may be raised and shaped to create more depth. The completed individual pieces fit together like a jig-saw puzzle, glued to a 1/4 inch plywood backing cut to the shape of the final product. Marquetry similarly creates a “picture” using various selections of wood pieces, but in Marquetry the pieces are uniformly thin (usually cut out of thin wood veneers) and are pieced together and glued to a substrate.



Neal Hoegemeyer Talks about Intarsia

Neal has been doing intarsia work for many years, since before I joined the Guild about 2009, and as a result is quite skilled at the craft. Along the way he introduced us to **Kathy Wise**, a nationally known Intarsia artist from Yale, MI. She has a company which designs and sells intarsia patterns and kits. (<https://wiseintarsia.com>) Kathy presented a Guild program in April of 2016, showing her patterns, tools, techniques and critical rules for effective intarsia project creation. Kathy is scheduled to present another Guild program in May 2024.



Neal Hoegemeyer Describes his Shepherd Intarsia

Neal showed his intarsia work on a Kath Wise design of a Shepherd and Sheep Nativity scene. He listed the process steps as pattern review, wood selection and preparation, pattern cutout, tape and glue, and lastly cutting, fitting and shaping. He showed how the pieces are cut out of a selected color of wood (species) with the scroll saw after the numbered pattern has been glued to the stock, and he showed a partially assembled part of the Shepherd. The pieces can become quite intricate in areas of detail such as the hands, turban and sheep’s faces. He also showed the tools he used for shaping the faces of the individual pieces, including a Dremel with sanding cylinder,



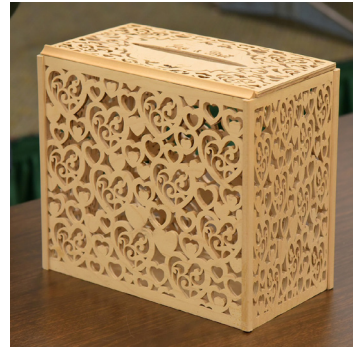
a spindle sander, knife, and small chisels.

He then went on to demonstrate some marquetry, starting with an image of a hunting dog. He made a pattern of shapes, each marked with wood species and grain direction, then showed the order in which the pieces must be taped on the wood for scroll sawing.

Neal described both the straight cut and bias cut marquetry methods. For the bias cut method, also known as the “double bevel” approach, the technique uses the scroll saw with the table tilted at an angle. Essentially, you are cutting two pieces of veneer, and the bevel created by the angle of the table allows the bottom veneer to fit precisely into the top veneer with essentially no kerf gap, sort of like a dovetail. In Neal’s case he used a 12 deg table tilt, with the correct angle being a function of the kerf and veneer thicknesses. Also, the cut must be made with the blade running along the outside of the curve being cut. One also has to make the cuts in a particular order, from inside pieces to outside pieces. Neal showed an in-progress two-colored dog, and planned to demo making a marquetry “baby” figure, but ran out of time. His overall skill at intarsia and marquetry are impressive.

The final part of the meeting was **Vince Choraszewski** showing his very considerable fret-sawing skills. He has been doing fret work for over 40 years. Vince is a recognized master scroll saw artist, and is actually a scroll saw woodworking professional, often selling his work. He is known by the top scroll saw authors and is often asked to help on projects.

Vince showed an example name plaque with groom and bride’s names scroll sawed and mounted on a background exotic type wood. He also showed a set of six “silhouette” Army helicopters, which for efficiency were cut all at the same time as a stack of thin blanks. He also has done many memorial plaques, with name inscription and birth/death dates scroll sawn out with reverse-sawn metal letter inserts. I believe both of these can be sawn stacked, with a thin kerf blade, such that the metal (or other contrasting material) can be inserted with little gap.



Vince Choraszewski's Wedding

Another impressive piece was a wedding gift envelop box with lid, roughly a 1 ft by 1 ft by six in. cube, with lid and four sides fret sawn with a very ornate pattern of interspersed, variable-sized hearts. This was made at the request of his daughter for her wedding reception. The fretwork was done in ¼ inch baltic plywood. Vince said the project involved 2,000 – 3,000 individual cut outs, and it took him five long days to complete.

Vince’s masterpiece to date was the scroll sawing of the words to the *Lord’s Prayer* in very ornate scripts, all laid out in a very ornate framing on a large panel. The total size was 3 feet by 4 feet. This work is extraordinary. It took Vince five weeks of eight-hour days to complete.



Those of you who know Vince Choraszewski's Lord's Prayer Fretwork

Vince, know that he is a very generous and welcoming person. Ten years ago he made a gift for me of his scroll saw handiwork to hang in my shop. It was a “Got Wood” beaver plaque. It is still hanging in my shop today. All my shop cats and grandchildren have wondered what it is.

We thank Berg, Pete, Neal and Vince for their work in preparing for and presenting this valuable review of scroll saw work and equipment.

- Dale Ausherman



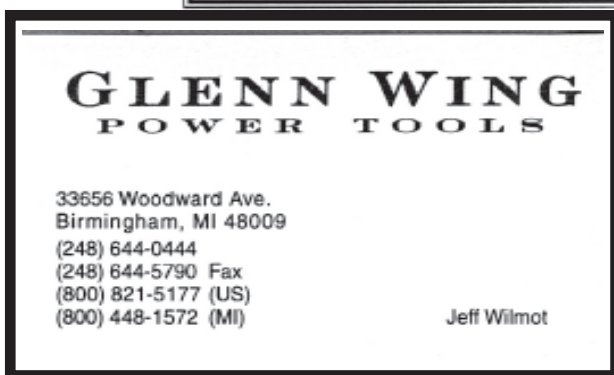


## DUSTY HUMOR



- **Do you know why woodworkers always get so mixed up at the airport?**  
*Because they can never find the right plane.*
- **Why do banks hate woodworkers?**  
*Because all they ever want to do is open up a "shavings account".*
- **I picked up a book on woodworking.**  
*Just need to carve out some time to read it.*

These phrases are provided purely for your humorous enjoyment. Feel free to send your favorite woodworking pun to the MWG Newsletter Editor for possible future publication.



**ODETTE FERGUSON**  
SALES REPRESENTATIVE  
E-mail: [odette@sawspec.com](mailto:odette@sawspec.com)



10555 Shook Rd. P.O. Box 74438  
Romulus, Michigan 48174-0438  
[www.sawspec.com](http://www.sawspec.com)

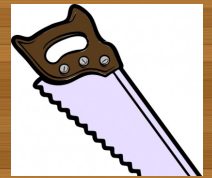
Your single source for all  
your sawing needs...from  
coolants to machinery

Voice  
800-SAW-SPEC  
800-729-7732  
734-941-2824  
Cell  
734-740-1691  
Fax  
734-941-2883

Member of  
Industrial Distributors Association  
International Saw & Knife Association



## WOODWORK NOTES



### MWG Apparel Availability

After a hiatus following Covid, we are again offering Michigan Woodworkers' Guild clothing apparel including different types of shirts and a baseball cap. The items include the embroidered MWG logo and a map of the state.

Available are Denim long sleeve shirts in either light or dark blue. We also have Poplin shirts in long or short sleeves in various colors and we can get polo type shirts.

The cost of a shirt is \$30 and includes the logo, you can also include your name on a shirt for an extra cost of \$5. Baseball style caps as shown in the picture are \$16 which includes the MWG logo.

There are benefits to having a MWG shirt such as showing your pride in being part of a wonderful group of woodworkers and if you have your name on the shirt, you still get 2 raffle tickets per dollar even if you forget your official MWG name tag.

For more information, please see **Ron Ross** at any meeting or at: [ross1508@gmail.com](mailto:ross1508@gmail.com).



MWG Cap

**CHILDREN'S  
HOSPITAL  
MWG PROGRAM  
UPDATE****From Ron and Dan****News from the Toy and Box Committee**

By the time you read this newsletter article Memorial Day Weekend 2023 will be over and the unofficial start of summer will have begun. And from what the weather reports are saying, the weekend was spectacular.

This also means that many of us who have a shop in the garage (myself included) will probably not be spending much time out in the shop due to a variety of reasons; too hot, other hobbies, family outings and possible travel during the summer months.

**Bergs Cars Staging for a Racing**

However this does not mean that toy making comes to an end. This is a good time of year to determine your designs, set aside stock and acquire supplies such as wheels, finishes and other parts. There are many internet sites where toy projects and plans can be found for free such as "A Cut Above Woodworking". A quick search on YouTube shows many sites with toy making in mind (just type in Wooden Toy

Making in the search bar).

As mentioned last month, we are now stocking a new item on a trial basis. We have treaded 1", 1 1/4" and 1 1/2" wheels to enhance your toy making designs. They are about 40% wider than standard wheels with a more realistic look. Although these are quite a bit more expensive than standard wheels, they do give that little bit of extra oomph to your vehicles. And they use the standard 1/4" dia wheel pegs and washers that the Guild supplies.

We will once again be sponsoring a Toy Contest this year. The rules will pretty much follow last year's rules. During the social hour prior to our live November meeting, we will be accepting from each toymaker your best toy (only one per maker) for competition. A group of distinguished judges, picked/volunteered from the MWG, will peruse the entrants and pick

**Bill Damico Model Ts**

three winners. In the interest of remaining impartial, if you submit a toy you will not be a judge. The winning categories will be

1. Best overall design
2. Best painted finish
3. Best clear (stained/varnished) finish

Here's your chance to showcase your skills at designing and building toys, showing off your world class painting skills and perhaps using that special piece of burl or quarter sawn chunk you have been saving with a beautiful clear finish. Of course, all the normal rules for toy making apply to this contest; no metal parts, no sharp or pointed edges and only approved glues and finishes.



**Vic Bonaro Trains**

We will be accepting only one toy for each maker; the judge's decision will be final and the winners in each category will be awarded a \$25 gift certificate from Rockler. After the judging and awarding of prizes, toys will be retained and included in the donation to the Children's Hospital for the Snowpile Program.

We will also expand the contest this year to include a category for Best Memory Box. There will be 2 prizes awarded; one for best finish and one for best design. More details will be forthcoming.

In planning your toy or box making, please remember to follow the guidelines listed in our website. With so many government regulations coming forward we have to be very careful that toys and boxes conform to the appropriate standards. Within the Toy Project section under the Programs/Resources tab, click on the link "Toy Guidelines for Children's Hospital" for more specific requirements.

**Ken Wolf Yellow Toys**

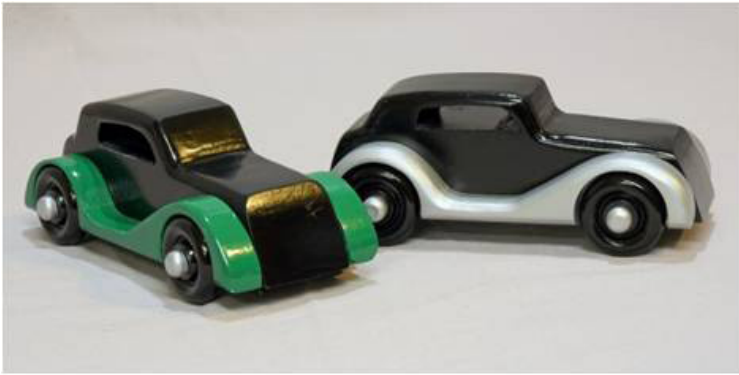
As has always been the policy, the Guild will provide standard wheels (1", 1 1/4" or 1 1/2" dia) along with the new treaded wheels, 1/2" OD nylon washers and 1/4" dia. wheel pegs free of charge to any member who wishes to make toys for this program. We do have a fair supply of the treaded wheels at this time and should they be a big hit. We will arrange to have more in the years to come. Any of these items can be obtained by contacting Ron or Dan.

The Guild still has an inventory of non-standard

**Bill Damico Prototype Tow Truck**

wheels and other toy parts that have been recently categorized. While we do have a limited supply and do not plan to re-stock these once the current supply runs out, we currently have;

- 1 3/4", 2", 2 1/4", 2 1/2", 2 3/4" and 3" diameter standard style wheels
- 2", 2 1/4", 2 1/2" and 2 3/4" diameter treaded tire style wheels
- 2" and 2 3/4" diameter wagon style wheels
- 1 1/4", 1 1/2" and 2 1/4" diameter flanged style train wheels
- Wood shapes such as acorns, beads, balls, caps and discs
- Large and small shaker style pegs
- Three sizes of wood peg people
- Steam engine/steam train parts and smokestacks
- Various small pieces of poplar, suitable for glue-up



**Vic Bonaro Rolls Royces**

These specialty items can also be obtained by calling either Ron or Dan. However, these supplies are starting to dwindle. We will also bring some of these items to Guild meetings on a regular basis.

We will continue to set a goal of delivering 400 toys to Children's Hospital for the Christmas Snowpile program. This program is only a part of the toy distribution. Throughout the year a fair amount of simpler toys are distributed to all the clinics within the Children's Hospital Complex. These toys are used by the children in the waiting rooms as they wait to see a specialist or treatment. Some toys are passed out to siblings of child patients when they come to visit. Other toys stay with the children when they are released from the hospital.



**Vic Bonaro Vets**

The hospital also has a need for boxes, both plain ones, which the children can use for activities during

their hospital stay and somewhat fancier boxes, usually made with hardwoods and more intricate joinery, which are presented to family members of children who did not survive their afflictions. The hospital does like boxes that are about the size of a shoebox. Also the picture frames on top of the memory boxes are well liked by the hospital staff but not necessary.



**Bergs Delivery Truck**

Once again, thanking all of you toy makers for your support along with the Guild's board for allowing funding to purchase wheels to distribute free of charge to all the makers.

Enjoy the summer, recharge and above all,  
Happy Toy making

For further information on our toy program, request wheels and axles or to arrange to drop off toys, please contact

**Ron** - 734- 812-5531 - [rross1508@gmail.com](mailto:rross1508@gmail.com)

**Dan** - 313-702-5836 - [dan56laura@att.net](mailto:dan56laura@att.net)





**Michigan Woodworkers' Guild  
Henry Ford II High School wood shop tour  
11911 Clinton River Rd, Sterling Heights, MI 48313  
Saturday, June 3, 2023 1:00 PM- 4:00 PM  
Members and Guests invited**

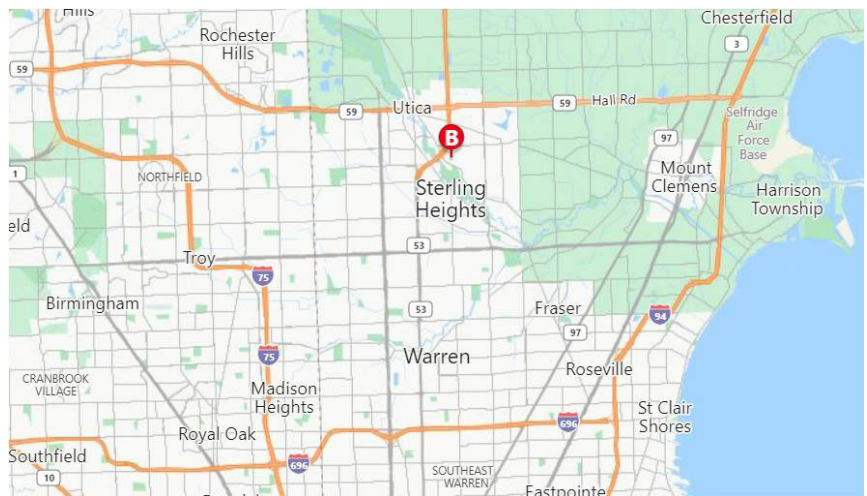
This is our annual guild field trip.

It will be interesting to see the Henry Ford High school wood shop.

The tour will be hosted by shop teacher Chris Davis. This shop has become world famous for building custom paddle boards for high profile people, including CEO's, business owners, and celebrities such as Richard Branson, Ty Pennington and Kenny Chesney.

It is not your traditional wood shop and you will want to see it.

Hope to see you there!



**Map to Henry Ford II High School**

**How to Get There from Dearborn, Mi.:**

Take I-94 East towards Detroit

Exit 230, head on the ramp right and follow signs for 12 Mile Rd

Turn left onto E 12 Mile Rd toward Macomb Community College

Turn right onto Utica Rd

Turn right onto Hayes Rd

Bear left onto Clinton River Rd

Turn right onto Henry Ford II High School driveway

Take the one-way drive around the school

The bay door by the dumpsters will be open



**Henry Ford II High School**

**MWG MEETING TIME: 12:30 PM**



## FATHER'S DAY SPECIAL SAVE OVER \$175

LIMITED TIME! 6/1 – 6/21/23 ONLY!



**\$599<sup>99</sup>**

### DEWALT® DW735X 13" 2-SPEED PLANER WITH KNIVES AND TABLE

Automatic carriage lock reduces the movement  
that causes snipe

Reg. \$779.00 SKU: 37386

**SAVE  
35%**

**HAVE YOU  
SEEN THIS?**



**\$14<sup>99</sup>**

### 10" ROCKLER SPRING-LOADED ONE-HANDED BAR CLAMP

Just squeeze the trigger and the spring  
closes the jaws!

Reg. \$22.99 SKU: 65890

## LUMBER OF THE MONTH SPECIAL BUYS!

IN STORE ONLY • WHILE SUPPLIES LAST

**\$2<sup>99</sup> BD. FT.**

### RUSTIC HICKORY S3S 13/16"

SKU: 80399



**\$7<sup>99</sup> BD. FT.**

### SAPELE S2S 15/16"

SKU: 57259



**ROCKLER®**  
WOODWORKING AND HARDWARE

SIZZLING SUMMER SAVINGS PRICING VALID 6/2–6/29/2023

26160 Ingersol Drive • Novi, MI 48375 • (248) 543-5110 • Rockler.com

Please check Rockler.com for current store hours.

For membership information contact

Dave McCagg at: [d2mccagg@provide.net](mailto:d2mccagg@provide.net)

For name tags, sign up with Ed Stuckey at a  
regular meeting.

Executive Board Members / Committee Chairs

Jerry Romito.....	President.....	248-475-5976
Dan Holowicki.....	Vice President.....	734-283-9898
Ed Stuckey.....	Treasurer.....	313-345-3671
Don Hess.....	Secretary.....	734-207-8427
Dan Holowicki.....	Officer at Large.....	734-283-9898
Tony Gigliotti .....	Officer at Large .....	248-853-8349
Bill Gayde .....	Officer at Large .....	248-859-3949
Ron Ross.....	Officer at Large.....	734-812-5531
Rich Herbert.....	Officer at Large.....	248-628-0644
Ragnar Bergethon...	Officer at Large.....	248-608-8436
Ken Wolf.....	Officer at Large.....	734-981-3423
Dave McCagg.....	Officer at Large.....	734-482-6764
Tim Kolassa .....	Library .....	248-765-3758
Dave McCagg.....	Newsletter Editor.....	734-482-6764
Dave McCagg.....	Membership.....	734-482-6764
Larry Last..	Programs/Website Calendar....	248-207-9386
Bob Mills.....	Mentoring.....	248-535-6718
Kevin Guolet .....	Camera Chair .....	248-672-5341
Fred Ball....	Web Site Calendar (Backup).....	248-681-3108
Ron Ross.....	Toy Program.....	734-812-5531
Kevin Guolet.....	Officer at Large.....	248-672-5341
Kevin Guolet.....	Food Coordinator.....	248-672-5341

6 MILE RD.

George's Senate Coney  
Island Restaurant  
39450 Dun Rovin Dr.  
Northville, Mi. 48168

5 MILE RD.

HAGGERTY

I-275

MAP TO GEORGE SENATE RESTAURANT  
HAGGERTY BETWEEN 5 & 6 MILE

Next MWG Luncheon: (Coordinated by TBD)

**Thursday, 22 JUNE 2023 at 10:16 AM**