



# MICHIGAN WOODWORKER

michiganwoodworkersguild.com



Michigan Woodworkers' Guild (est. 1981) March 2021 Vol. 42 No. 3

When / Where:

**SUNDAY, MAR 14, 2021**

(Virtual Meeting starts: 2:00 PM)

Live Meeting

## Showcase of Skills

Remote Zoom w/Email Invite to Members

Coordinated by: Ed Stuckey

ZOOM MEETING START TIME: 2:00 PM



VIRTUAL MEETING  
CONNECTION DETAILS TO  
BE SENT BY JERRY ROMITO

### MARCH:

MWG's "Showcase of Skills" co-ordinated by **Ed Stuckey** is scheduled for our Sunday, **March 14, 2021** Virtual Meeting

### APRIL:

Professional Wood Carver, **Mary May**, will demonstrate an "Introduction to Carving" at our **April 11, 2021** Virtual meeting

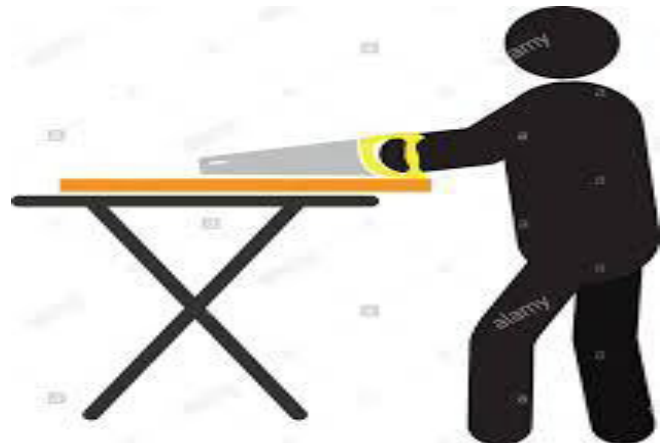
### MAY:

**Ragnar Bergethon**, aka "Berg", details the unique techniques to build a **Craftsman Style Side Chair** at our Sunday **May 9, 2021** Virtual meeting.



## Celebrate an **EARLY** St. Patrick's Day

At our March virtual meeting, Ed Stuckey will coordinate our annual "Showcase Of Skills" where a cornucopia of members will demonstrate via both Live and Pre-recorded presentations.





## President's Corner

By Jerry Romito



March 2021

This will be a short article from me this month, since there is a lot of information and new features packed elsewhere in this newsletter. Our Editor Dave McCagg has been working overtime.

I am pleased to say that last month's Zoom meeting, which presented 17 short Youtube woodworking videos, was well received by the 42 members who attended. You can read Dale Ausherman's review in his column.

Our March 14 Zoom meeting will be our annual Showcase of Skills meeting, which will feature project photos submitted by members, as well as a live video presentation by Ed Stuckey featuring his period furniture from his home. If you want to participate but have not already signed up, you can still do so if you email (GJRomito@aol.com) your project photos to me by March 7. As usual, I will be sending the Zoom link a few days before the meeting.

Our current plan is to have Zoom meetings for the rest of this year, and they are all booked with exciting topics including three professional speakers. So stay tuned to the newsletters and the website to see the schedule.

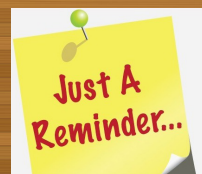
Jerry Romito  
MWG President

**MARSH POWER TOOLS**  
SALES AND AUTHORIZED FACTORY SERVICE

20579 Middlebelt  
Livonia, MI 48152  
(248) 476-7744

7187 Grand River Ave.  
Brighton, MI 48114  
(810) 220-1122

Fax: (248) 476-1090



## MWG MEMBERSHIP



A whole-hearted thank you is extended to everyone who has paid their 2021 Michigan Woodworker's Guild dues. As of this newsletter writing, we have achieved approximately 60.6217% of our 2020 members who have renewed their 2021 Michigan Woodworker's Guild membership. Renewal dues for 2021 are \$25.00 which has remained unchanged for a number of years.

Payment can be accomplished either by mailing a check to the Membership Chair or through our website dropdown menu under "Membership - Payment/Renewals". Feel free to pay your dues **Chicago Style** – "Early and Often" (As your dues were payable in January, early is no longer an option so just pay them **OFTEN**)

Again, **thank you** to those who have renewed; to those who have not

## WHAT'S THE HOLDUP?

**Michigan Naturals**  
DECORATIVE CABINET HARDWARE  
www.MichiganNaturals.net

Ann Ivory  
313-506-1963



## MEETING REVIEW



By Dale Ausherman

**Editor's Note:** See Jerry's UTube list at:

[https://michiganwoodworkersguild.com/wp-content/uploads/newsletters/JRomito\\_YouTube\\_Presentations\\_2-14-21.doc](https://michiganwoodworkersguild.com/wp-content/uploads/newsletters/JRomito_YouTube_Presentations_2-14-21.doc)

### President Jerry's Collection of YouTube Videos

Due to the continuing Coronavirus restrictions on large meetings, the Guild continues online virtual programs to educate and entertain members in the craft of woodworking. For our February meeting, President Jerry took great advantage of the Zoom meeting video format to share with us a wide-ranging collection of woodworking videos of instruction and noteworthy craft skill. The videos should be of great interest to all levels of woodworkers and are but a tiny sampling of all the woodworking videos available on YouTube. Jerry was initially fearful that some of the videos would be too simple for some members, but I consider myself relatively experienced and I learned things from every video.

Following the online meeting Jerry sent to members via email a document containing links to all 18 presentations played. He included a few extra videos for which there was not time during the meeting to display. He also included a link to the website or YouTube Channel for each of the presenters. Thus one can go to their site and subscribe, which will then bring up all of the videos made by that presenter. This work by Jerry has made very easy my reporting below. Thank you Jerry! I have included all of the active links below. I believe the document of links will also be included on our Guild website. The links below are in the order viewed. I attempt to provide a few words of summary for each presentation, to aid in your perusal if you were unable to attend the session.

#### 1) Ishitani -

<https://www.youtube.com/channel/UC7FkqjV8SU5I8FCHXQSQe9Q> .

Making a Walnut Trestle Table - 13.3 minutes. Japa-

nese made-to-order furniture maker using both power and hand tools to construct a walnut trestle table from rough unsurfaced lumber to final product.

<https://www.youtube.com/watch?v=T5byaGZjpnQ>



#### 2) Mary May -

[https://www.youtube.com/channel/UCbn9V\\_U62LCmxWTIT7DI5eA](https://www.youtube.com/channel/UCbn9V_U62LCmxWTIT7DI5eA)

This is a FREE Welcome Video for her online School of Traditional Woodcarving. Mary writes: "I discuss a bit of my background and show you how to get started on the website whether you want to be a Free



Member or access more advanced lessons with one of the Premium Membership option."

During the meeting we watched a Charleston Magazine visit to the John's Island studio of wood and stone carver Mary May, who filled us in on her new book on carving the acanthus leaf, her online woodcarving school, and what she does for fun (hint: chisels are involved).

<https://www.youtube.com/watch?v=PWeE9T8DfcA>

#### 3) DIY Woodworking Projects -

<https://www.youtube.com/channel/UCuVaQIpPgUyGP6AytqSfs0g>



This channel features a woodworker who creatively makes many different products from reclaimed pallet lumber. In this video



he makes beautiful wooden wall art. An interesting (and new to me) aspect is his use of CA glue, with sawdust and spray accelerator to quickly join and fill many small pieces of wood. Pallet Wood into a Work of Art – 12.5 minutes.

<https://www.youtube.com/watch?v=XhJuI3fLcAw&t=21s>

4) **The Wood Whisperer** - by Mark Spagnolo. Many of us have heard of Mark and his YouTube channel. Mark is a podcaster, video producer, author, and woodworking enthusiast who has contributed articles and video content to FineWoodworking.com, Popular Woodworking Magazine and WOOD Magazine.

[https://www.youtube.com/channel/UCKp44bWWZiIOPShPN\\_ytShw](https://www.youtube.com/channel/UCKp44bWWZiIOPShPN_ytShw)

Mark spoke to the Festool Domino for making loose-tenon mortise and tenon joints. But this tool is expensive.



So in this video Mark demonstrated making the many angled joints in a chair project using a conventional router instead.

Router for Loose Mortise & Tenon Joints - 7.2 minutes

<https://www.youtube.com/watch?v=ws1D23zzCVc>

**Woodworkers Guild of America** - by **George Vondriska**. Join the WWGOA community to access a huge library of woodworking instructional videos. Premium membership is apparently \$55/year. A couple of years ago Jerry was able to join at a greatly



reduced first year rate by use of a coupon code, but my search for a current code with significant discount came up empty.

[https://www.youtube.com/channel/UClQGOb\\_7vqGrylX8o5VnOEw](https://www.youtube.com/channel/UClQGOb_7vqGrylX8o5VnOEw)

Jerry showed us several current WWGOA videos:

5) **Cutting a Log on a Bandsaw** - 3.9 minutes

<https://www.youtube.com/watch?v=wUlUv-oK5zw>

6) **Coiling a Bandsaw Blade** - 1.8 minutes

[https://www.youtube.com/watch?v=RfPkl\\_kN7vc](https://www.youtube.com/watch?v=RfPkl_kN7vc)

7) **Determining a Safe Table Saw Blade Height** - 1.1 minutes

<https://www.youtube.com/watch?v=U-bTxAeh9DA>

8) **De-Whiskering Wood** – 3.0 minutes

<https://www.youtube.com/watch?v=FfXCkAm3j8M>

9) **Rob Cosman** -

<https://www.youtube.com/channel/UCqp8oXLR84eiryfhNXX-nTA>

Rob is a hand-tool coach that tours all over the world teaching his techniques. Along with many woodworking products that Rob has released, he has recently produced a brand new dovetail saw that he believes is the missing link to many dovetail cutting issues. To order any of Rob's products or instructional videos, visit [www.robcosman.com](http://www.robcosman.com). Jerry had for us a Cosman video on Woodworking Myths Busted - 13.1 minutes. He busts six myths: Do not sit plane on bench on sole; Block planes are best for end grain; Use a wet rag to remove glue squeeze out; Always lift a plane on return stroke; Wood furniture is cheaper to build than to buy; Domestic figured wood must be scraped, not planed.

<https://www.youtube.com/watch?v=66Xfn-anxgg>

**Alexander Grabovetskiy** is a professional woodcarver who operates a paid online woodcarving school, does work for commission, and provides many free videos on his channel.

<https://www.youtube.com/channel/UC5QaKys8uALqI7YtdFGhdzg>

10) Jerry provided two videos, one of him carving a Greek acroterion – 3.8 minutes,

<https://www.youtube.com/watch?v=803Ey1zqiCI>

11) Jerry further showed another video describing what it takes to become a professional carver. – 4.5 Minutes

<https://www.youtube.com/watch?v=I6fq0M9fWYk&t=8s>

**Stumpy Nubs Woodworking Journal** is a twice-monthly, free subscription multimedia e-magazine full of truly unique projects, tips, tricks, news and entertainment for every type of woodworker.

<https://www.youtube.com/c/StumpyNubs/videos>

Jerry provided sample videos on understanding and avoiding kickback, selection of basic table saw blades, and an overview of the available types of clamps, including recommendation for a basic starter set.

12) **Stumpy Nubs re kickback:** - 4.5 minutes

<https://www.youtube.com/watch?v=ulvP8Vv9SrE>

13) **Table Saw Blades** - Every woodworker needs three table saw blades - 8.0 minutes

<https://www.youtube.com/watch?v=OSQJ0247ifY>

14) **Clamps** - Which Woodworking Clamps Should You Buy - 10.7 minutes

<https://www.youtube.com/watch?v=PfDxa-0YQ88>

## **Infinity Cutting Tools –**

<https://www.infinitytools.com>

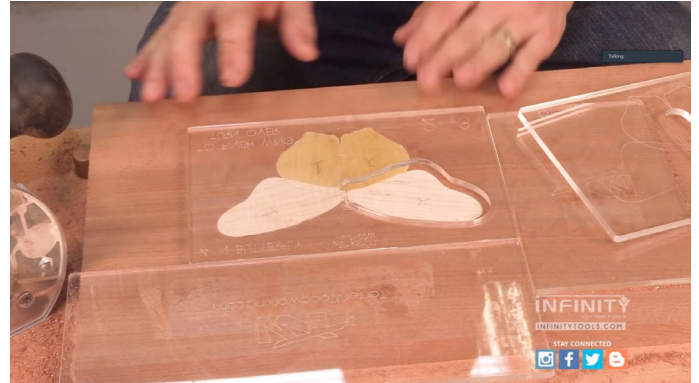
Infinity Tools is a wonderful source for many high quality and innovative tools.

15) **Mega Flush Trim Router Bits** - 3.4 minutes. These bits feature four individually brazed carbide tips in a compression (upcut /downcut) design to eliminate chipping and tear out at both the top and bottom of the material. Top and bottom bearings allow for template as well as pattern routing in applications with changing grain direction. (It would be interesting to know if these bits with multiple angled straight carbide edges cut as well as the more expensive but truly helical Whiteside Ultimate Flush Trim Bit.)



<https://www.youtube.com/watch?v=Hr29KWj1ELc>

16) **How to Use the MLIS Multi-Layer Inlay System** - 12.1 minutes. Covers use of the system which Jerry demonstrated at our last in-person jig and tool meeting in October 2019. The video shows an easy way to produce attractive inlays with



the use of the Tarter Woodworking Multiple Layer Inlay Stencils (MLIS). These enable you to create complex inlay designs by simply following along the cut-outs on each numbered template (included in each MLIS set), using a plunge router with an installed Whiteside router inlay kit.

<https://www.youtube.com/watch?v=KrvNjxphlkk>

**Vlad Carving** – Reviews the incredible chainsaw carving skills of a Ukrainian wood carver named Vlad.

<https://www.youtube.com/channel/UCnjy3EMZyImR63jxGMyxEcA>

17) **Chainsaw Woodcarving**, native American with Wolves - 11.8 minutes

[https://www.youtube.com/watch?v=7\\_1Mr8t9fqs](https://www.youtube.com/watch?v=7_1Mr8t9fqs)







**Tom McLaughlin** - Epic WoodWorking – The YouTube channel of our friend and online instructor, containing many free videos!

[https://www.youtube.com/channel/UChAHfq\\_wH3MpELvE1X\\_vT3g](https://www.youtube.com/channel/UChAHfq_wH3MpELvE1X_vT3g)

18) **Lombardi Trophy Replica Build** – 6.7 minutes. Tom says: "Sometimes two obsessions converge and you end up with something beautiful. That happened for me when my lifelong love for wood-



working and football collided as I took on the challenge to make the iconic form that is the Lombardi Trophy." If you even wanted to make a wooden football with laces, this is the video for you!

<https://www.youtube.com/watch?v=KdBE0M8P04I&feature=youtu.be>

Below are the four extra YouTube channels which we did not view as part of the meeting, but which Jerry graciously included in the list provided to members:

**Lee Nielson Toolworks** -

<https://www.youtube.com/user/LieNielsenToolworks>

**WoodWorkWeb** by: **Colin Knecht** -

<https://www.youtube.com/channel/UCMd9JggSESwyuOs0yuSTIEw>

**Fine Woodworking** -

<https://www.youtube.com/channel/UC47EhkMV18WIRqV3VhUH3yg>


**Bastionhead Woodworks** – Tracey writes: "We are Tracey Cheuvront and Kathrina Nellis of

Kansas City, Kansas. We make useful art from both green wood and dry lumber with an emphasis on reclaimed materials. Specializing in kitchen items, free-form bowls, and restoring vintage hand tools, we are recognized for our "non-linear" approach and eclectic mix of hand and power carving methods which we have taught nationally at The Woodworking Shows and DiResta Workshops."


[https://www.youtube.com/results?search\\_query=bastionhead+woodworks](https://www.youtube.com/results?search_query=bastionhead+woodworks)

We thank Jerry for his tremendous work in reviewing and collecting these videos, and for providing the convenient links to presenters and channels. This would have taken much time and diligence, and we are greatly indebted. Happy viewing!

- Dale Ausherman



**CHILDREN'S  
HOSPITAL  
MWG PROGRAM  
UPDATE**



**From Ron, Ken, and Dan:**

## Calling All Toymakers!

Fellow Members, the Children's Hospital Toy & Box Program is still in need of your support. We have set a goal of delivering 400 toys to Children's Hospital for many more years than I have been a member. Sadly, due to the pandemic and other factors we fell short by approximately 40 toys in our December 2020 delivery. When Ron Ross spoke to a representative from Children's Hospital the other day he was informed that the toys we dropped off in December have all been distributed! Additional the Christmas Snowpile program is only a part of the toy distribution throughout the year, with the larger, more complex toys given out at that time. Throughout the year a fair amount of simpler toys are distributed to all the clinics within the Children's Hospital Complex. These toys are used by the children in the waiting rooms as they wait to see a specialist or receive treatment. Some toys are passed out to siblings of patients when they come to



visit. Some toys stay with the children when they are released from the hospital.

The hospital also has a need for boxes, both plain ones, which the children can use for activities during their hospital stay and somewhat fancier boxes, usually made with hardwoods and more intricate joinery, which are presented to family members of children who did not survive their afflictions. The hospital does like boxes that are about the size of a shoebox. Also the picture frames on top of the memory boxes are well liked by the hospital staff but not necessary. Last year we did exceed our quota for boxes, and as such there is currently a stockpile of boxes. With that being said, any amount that we can deliver is greatly appreciated. The hospital staff also requests that any toys donated have smooth rounded edges and a smooth finish whether painted or varnished. This helps to maintain the ease of cleanliness that is paramount throughout the hospital complex.

If you have made toys in the past and plan on doing so this year we thank you. If you have thought it might be an easy project to put together, yes it can. On our updated website, we have documents that give plenty of tips, techniques and guidelines for building the toys. There are also a number of simple drawings with plans for everything from sailboats, to pull-toy animals to some pretty neat race cars. I personally have already made 25 toys from various scraps of hardwoods. I am hoping to complete another 20 – 25 toys by year's end.

As has always been the policy, the Guild will provide wheels (1", 1 1/4" or 1 1/2" dia), nylon washers and wheel pegs free of charge to any member who wishes to make toys for this program. If you need these items, they can be obtained by contacting Ron or Dan. If you would like some ideas for toys, patterns are available on our guild website.

We all realize that last year has been especially difficult for all involved. We all suspect that at least a good portion of this year will also be a socially distant year with limited opportunities for in person gatherings. For those families with children being treated at the hospital imagine how much more difficult the pandemic situation has been for them. This is the one program MWG does annually to benefit those children who really, really need a reason to

smile. Please make every effort to support this Guild program. Why not make use of your extra shop time this year to create a small gift that can bring a smile to a child who would love to have a moment and forget about their reason for being in the hospital.

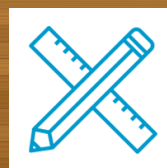
Thank you for your support.

Ron Ross & Dan Holowicki

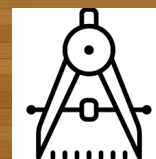
For further information or to arrange to drop off toys, please contact

Ron - 734- 812-5531 - rross1508@gmail.com

Dan - 313-702-5836 - dan56laura@att.net



**MWG  
DESIGN  
CENTER**

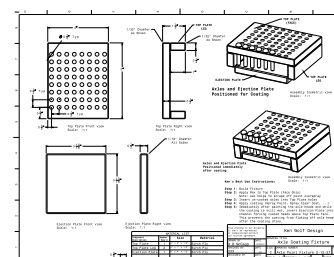
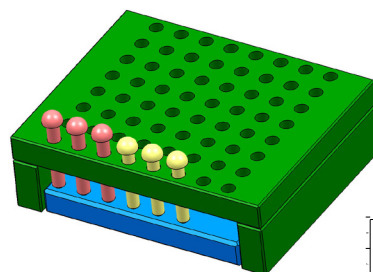


## From the Editor

In support of the MWG Toy Program, Ken Wolf has developed several jigs and fixtures to help in the construction of multiple toys with the greatest of ease. Primarily, Ken has constructed jigs to coat both axle heads as well as wheels.

Below is one of these jigs. It has been initially designed in CAD from which detailed drawings were made followed by a physical sample. For a detailed drawing of this jig please see the MWG website at:

[https://michiganwoodworkersguild.com/wp-content/uploads/designs/Ken\\_Wolfs\\_Axle\\_Coating\\_Fixture\\_2-17-21.pdf](https://michiganwoodworkersguild.com/wp-content/uploads/designs/Ken_Wolfs_Axle_Coating_Fixture_2-17-21.pdf)





## MWG RESOURCES



Fellow MWG member, **Tom Duke**, has been busier than a bee compiling as many woodworking resources as "Carter has Pills". In this month's resource reflection, Tom details his positive interactions. Tom writes:

"Awhile back I bought an adjustable 14" Bridge City Tool Works square on EBay. It was not at all square, finicky, and I had issues correcting it myself.

I called Bridge City Tool Works, and they suggested I contacted Rutager West. He told me he had purchased all the old tooling and parts from John Economaki and could dial that square in for me.

I sent him three squares, a BCTW and an old Stanley and another maker from the mid 1800's. They all came back to me fast, and right on the money. Nice to know they are now perfect, and Rutager's service was very affordable.

He did me a favor with the non BCTW squares, but please know all Bridge City Tools are his focus. Go to Rutager's website, ([www.bctwlegacyrepairs.com](http://www.bctwlegacyrepairs.com)) read the history, see his many services, tips on cleaning, and restoring your BCTW pieces.

Tom"

Below are more companies from our expanding Resource list.

### Used Vintage Tools & Repair – Sharpening 11

#### Jim Bode

<https://www.jimbodetools.com/>

**Rutager West** @ BCTW Legacy Repairs llc Rutager West

[bctwlegacyrepairs@gmail.com](mailto:bctwlegacyrepairs@gmail.com)

#### Vintage Vials

<https://shop.vintagevials.com/>

#### Vintage Delta Tools

[www.ebay.com/srt/vintagedeltarockwellparts](http://www.ebay.com/srt/vintagedeltarockwellparts)

#### Saw and Specialty

<https://sawspec.com/>

As the website matures, we will be adding more information about these sources for all our members to access.

Once again, we are requesting that everyone send their favorite sources, both local and nationally, to the Newsletter Editor at: [d2mccagg@provide.net](mailto:d2mccagg@provide.net) We are targeting to build a robust listing.

#### ODETTE FERGUSON

SALES REPRESENTATIVE

E-mail: [odette@sawspec.com](mailto:odette@sawspec.com)



10555 Shook Rd. P.O. Box 74438  
Romulus, Michigan 48174-0438

Your single source for all  
your sawing needs...from  
coolants to machinery

Voice  
800-SAW-SPEC  
800-729-7732  
734-941-2824

Cell  
734-740-1691

Fax  
734-941-2883

Member of  
Industrial Distributors Association

**CUSTOM WOODWORK & MILLING**  
Live Edge Slabs & Urban Lumber  
Barn Wood & Salvaged Wood  
Firewood

**JASON COVIAN**  
Office (734) 751-6746  
Cell (734) 658-2840  
[TREETURPOSED.COM](http://TREETURPOSED.COM)

LIVE JUNE 13  
WITH  
MICHIGAN WOODWORKERS' GUILD

CONSTRUCTING A  
WALNUT & MAPLE  
WRITING DESK

*Special Shop Session*  
with TOM  
MCLAUGHLIN

**EPIC**

## GLENN WING POWER TOOLS

33656 Woodward Ave.  
Birmingham, MI 48009  
(248) 644-0444  
(248) 644-5790 Fax  
(800) 821-5177 (US)  
(800) 448-1572 (MI)

Jeff Willmot





## MWG WEBSITE UPDATE

By Ragnar Bergethon

Have you looked at the MWG website lately? There have been a lot of changes and improvements. The website committee, established by the board in November, has been busy.

Our first priority was to get the site back to full working order. This has been completed. Using a new internet provider and superbly skilled webmaster, the site is brighter, all pages work properly, responds more quickly, and at a lower cost to the guild.

Many functional changes were made to the various sections within the site. The Home page is a fine example of the changes made. The page is reduced in size, easier to read, upcoming events are clearly shown, and Bill Rigstad has added a new feature which is a 16-picture rolling slide presentation that gives an overview of the many activities offered by the guild.

Several new features are being developed for the website. These additions will be fully functional in approximately the next 3 months. We will add each new feature as it is completed. The major additions are:

- The **Resource Center** will provide a detailed listing of where to get material, tools, services and guidance. Each source presented has been vetted by the guild members and recommended by them to their fellow members. All members are encouraged to send in their preferred sources for wood, equipment, tools, tool sharpening or other services to Dave McCagg ([d2mccagg@provide.net](mailto:d2mccagg@provide.net)).

- The **Design/Projects Center** will present designs for building large and small furniture, carving, turning, favorite projects, working with CNC machines and 3D printing, as well as many of our favorite jigs and templates for helping us be better craftsmen.

If you have special designs, jigs or projects that you wish to share with other members, please contact Dave McCagg ([d2mccagg@provide.net](mailto:d2mccagg@provide.net)).

- The **Forum Center** will be a great place to ask questions and get input from fellow woodworkers. Jerry Romito ([GJRomito@aol.com](mailto:GJRomito@aol.com)) is heading up this site.

- The **Buy/Sell Center** is being reactivated. Any member who wishes to sell or buy woodworking related equipment or supplies can now share their interests with fellow guild members. Ragnar Bergethon ([rbergethon01@gmail.com](mailto:rbergethon01@gmail.com)) will be heading up this center.

- The **Members' Only Center** is a password protected site which will allow members to share their contact information with other members. This is a very popular feature with leading woodworking guilds.

There are so many features offered by the guild, that we established a Policies/Procedures page to keep our policies, procedures, guild bylaws and mission statement as a reference source for all members.

As you review the new and improved MWG website, we would like to hear from you on what you like best and recommendations on how to continue to improving your website. Please send your comments to Ragnar (Berg) Bergethon ([rbergethon01@gmail.com](mailto:rbergethon01@gmail.com)).



## MWG NEWSLETTER NEW LOOK

Starting this month, we have given the Michigan Woodworker's Guild Newsletter a New Look.

The new format follows the fine work of **Tom Duke's** advertising staff's recommendations.

Feel free to let us know what you think by sending a note to the editor at: [d2mccagg@provide.net](mailto:d2mccagg@provide.net)



### ROCKLER FOAM ORGANIZER SHEETS, 2' X 4'

Easily create neat  
"French fitted" liners for your drawers

**1 1/8" THICK: \$9.99** SKU: 80293

**1 1/8" THICK, 3-PACK: \$24.99** SKU: 88749

**2 1/4" THICK: \$19.99** SKU: 88055

**2 1/4" THICK, 3-PACK: \$49.99** SKU: 86809



CREATE WITH CONFIDENCE

**For membership information contact  
Dave McCagg at: d2mccagg@provide.net  
For name tags, sign up with Ed Stuckey at a  
regular meeting.**



**\$34.99**

### DUST RIGHT® CORD AND HOSE HOLDER

- Keeps cords and hoses off the floor and out of the way
- Clamps to any work surface up to 3 3/8" thick

SKU: 69085



**SAVE 25%**

**\$14.99**

### DUST RIGHT® DETAIL VACUUM KIT

Reaches into the most hard-to-reach spaces in your shop and home

Reg. \$19.99 SKU: 54299



**POWER PLUS SALE PRICING VALID 3/5 - 4/1/21**

26160 Ingersol Drive • Novi, MI 48375 • (248) 543-5110 • Rockler.com

Due to COVID-19, hours may vary. Please check Rockler.com for updated hours.

### Executive Board Members

Jerry Romito.....	President.....	248-475-5976
Will Wilson.....	Vice President.....	248-207-8883
Ed Stuckey.....	Treasurer.....	313-345-3671
Don Hess.....	Secretary.....	734-207-8427
Dan Holowicki.....	Officer at Large.....	734-283-9898
Tony Gigliotti .....	Officer at Large .....	248-853-8349
Bill Gayde .....	Officer at Large .....	248-859-3949
Ron Ross.....	Officer at Large.....	734-812-5531
Rich Herbert.....	Officer at Large.....	248-628-0644
Ragnar Bergethon....	Officer at Large.....	248-608-8436
Bill Rigstad.....	Officer at Large.....	734-459-3374
Ken Wolf.....	Officer at Large.....	734-981-3423

### STANDING COMMITTEE CHAIRS

Jule Ann Clough....	Library.....	248-977-4131
Dave McCagg.....	Newsletter Editor.....	734-482-6764
Dave McCagg.....	Membership.....	734-482-6764
Larry Last.....	Programs.....	248-207-9386
Bob Mills.....	Mentoring.....	248-535-6718
Ragnar Bergethon....	Web Site.....	248-608-8436
Fred Ball.....	Web Site Calendar.....	248-681-3108
Ron Ross.....	Toy Program.....	734-812-5531

6 MILE RD.

George's Senate Coney  
Island Restaurant  
39450 Dun Rovin Dr.  
Northville, MI 48163

5 MILE RD.

**In-Person Luncheon**  
**SUSPENDED**

MAP TO GEORGE SENATE RESTAURANT  
HAGGERTY BETWEEN 5 & 6 MILE