



MICHIGAN WOODWORKER

michiganwoodworkersguild.com



Michigan Woodworkers' Guild (est. 1981) May 2023 Vol. 44 No. 5

When / Where:

SUNDAY, MAY 21, 2023

(Socializing Starts at 1:00 PM, Business meeting starts at 2:00 PM)

In-Person Meeting:

The Joys of Scroll Sawing by Pete, Vince, Jack, Neal

Meeting Coordinated by: Ragnar Bergethon



IN-PERSON MEETING AT:

Livonia Senior Center

MAY:

When a band saw cannot make the tight curves you want, reach for a scroll saw. **Pete Goddard, Vince Choraszewski, Jack Dalton, and Neal Hoegemeyer** will explain scroll saws, their blades, and accessories. Join us at 2:00 PM on Sunday, **May 21st 2023** at **Livonia Senior Center** coordinated by **Ragnar Bergethon**.

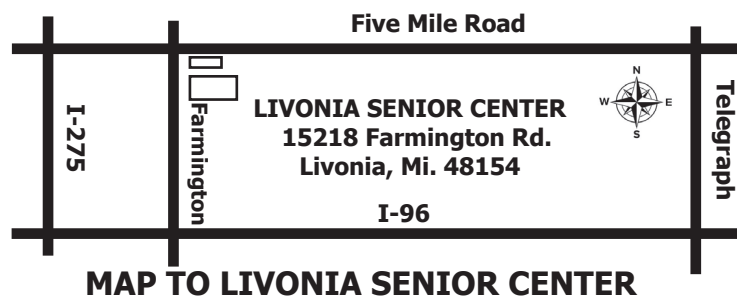
JUNE:

Our annual guild field trip coordinated by **Jerry Romito** will feature **Chris Davis** showing us his Henry Ford II High School wood shop where he makes custom paddle boards for celebrities. Meet at the High School on **JUNE 3rd 2023 at 1:00 PM**.

JULY:

NO MEETING IS SCHEDULED FOR JULY

Due to the summer shutdown, there is no July member meeting. All are encouraged to enjoy the month with family and friends as well as making more sawdust.



The Joys of Scroll Sawing by Pete Goddard Vince Choraszewski Jack Dalton Neal Hoegemeyer

May 21st

Ragnar Bergethon has brought together a quartette of **MWG** member scroll saw experts for our **May 2023** member meeting. **Pete Goddard** will start with equipment comparisons and scroll saw basics; then **Vince Choraszewski** will show off fret work; followed by **Jack Dalton** who will discuss advanced marquetry; **Neal Hoegemeyer** will then exhibit Intarsia and marquetry projects.





President's Corner

By Jerry Romito



May 2023

I don't have any "breaking news" this month, so just some random thoughts.

Although I am happy to see that we have been getting 45-50 members attending the past few meetings, I'm told that in the old days we could have 60-65 in attendance. That is a concern, since our membership is an aging population. The bad news is that during my tenure six of our members have passed away while at least that many have become unable to do woodworking and have sold their tools. The good news is that we have gained 27 new members in the past six months. But in spite of that, due to very slow renewal of 2023 memberships (for unknown reasons) our current active membership has dropped from 178 to 146 in the past six months. Our membership chairman has just sent out letters to our non-renewing members in the hopes that they may have just forgotten to renew. There are regular dues reminders in the newsletters, but maybe a lot of members are not regular readers (oh darn).

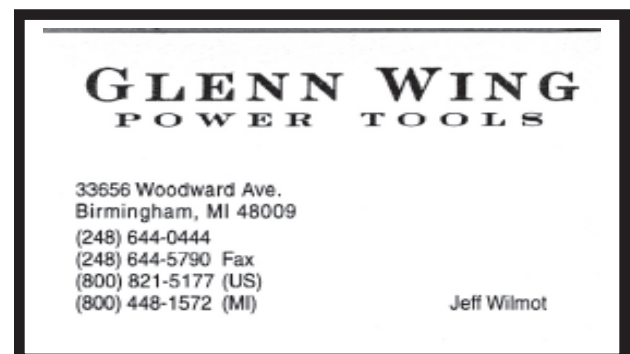
Your MWG board is trying to determine what we can do to keep more current members and to continue to attract new members. So next month we will be mailing a letter and a survey (with a stamped self-addressed return envelope) to all of our current members (and recent non-renewing members) as part of our effort to learn from members what they would like to see in the guild. I ask that you please watch for the letter and complete the survey.

Here is a thought about why to attend meetings. Since I wanted to do more woodworking after I retired about 12 years ago, I decided to join the guild about six years ago as an opportunity to learn more. But since I live 50 minutes away from Livonia (on a good traffic day) I figured that I would pick and choose which

meetings to attend, based on whether I was really interested in the presentation topic. I thought that some topics were too advanced for my skills, or involved tools that I didn't own, or were about projects that I didn't do at that time, so I did not go to those meetings. But then when I did attend a few meetings, I got interested enough to join the board, and for that reason I needed to attend all of the meetings. That's when I finally realized that every meeting, regardless of the specific presentation, had plenty to offer, and I've learned something at every meeting, either from the presenter or from just socializing with other members. So if you are a member that just doesn't think that you are interested in a particular subject, I would like to suggest that you attend anyway. You might be pleasantly surprised – as I was.

If any member wishes to talk about guild activities, please feel free to contact me at GJRomito@aol.com, or cell: 248-891-5331.

Jerry Romito
MWG President





MEETING REVIEW



By Jerry Romito

MWG Meeting Review

Larry Buettner Meeting

Band Saw Bowls

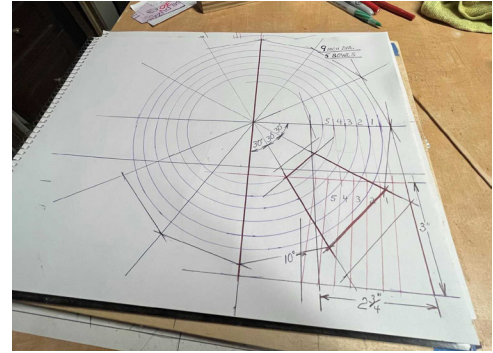
16 APR 2023

Since our usual NL reporter **Dale Aushman** was not able to attend the April meeting, I will give a brief overview of Waterford woodworker **Larry Buettner's** fabulous presentation on his bandsaw bowls, which was attended by about 50 members. Larry has been a woodworker for over 45 years, and for at least a dozen years he has been making beautiful intricately-decorated bowls (and even other items) that look like they have been turned, but that have in-fact been made with a bandsaw and sanding instead of a lathe. (Some of us met Larry about five years ago when he attended an MWG meeting just to show his work after the meeting, then I bumped into him again last year at Woodcraft, and we arranged for him to make this presentation). He brought dozens of items that he has made, which drew eager attention from members before, during, and after the presentation. He described his unique process in detail, aided by a PowerPoint presentation that I put together after spending an evening at his shop and photographing portions of his process. He also handed out a 3-page description of his process.

Larry's process involves segments, using five basic steps, aided by two custom homemade jigs for the band sawing:

Step (1) is laying out a full-size top view of the bowl outline which shows the bowl diameter and the number of segments (say 6, 8, or 10 for example).

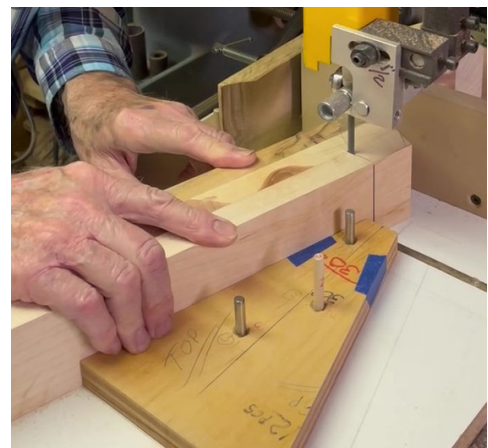
Step (2) is gluing up various strips into the single board that will be cut into segments. This is where the creativity and artistry come into play, as you visualize



Bowl Outline - Top View

what the combination of woods, colors, and grains will look like on the finished bowl. (I don't recall that Larry mentioned it, but he probably used a table saw and/or a planer to prepare the strips for gluing). The typical single board for a 10" diameter bowl made of eight segments would measure 2.25" wide x 2.5" tall x 31" long. This single board will make perhaps as many as five bowls, each of smaller diameter, depending on the wall thickness chosen.

Step (3) is cutting this board into segments with the bandsaw. The number of segments determines the angle of the cut (60 degrees for 6 segments, 45 degrees for 8 segments, or 30 degrees for 12 segments). This is where Larry's first jig comes into play. It is actually a set of jigs, one for each different segment angle. The jig has the angle on two sides, and he flips the board and alternates between the sides as he cuts the board. The jig has adjustable stops to handle different sized segments. These cuts could actually be made on a table saw, but Larry uses the bandsaw anyway.



Segment Cutting on a Band Saw



Step (4) is gluing the segments together into two separate semi-circles. (I noticed that he uses Titebond II). Since there is no easy way to clamp the segments while gluing, he simply holds two segments together on a flat surface for a few minutes, and then adds the additional segments in the same way.



Positioning Bowl Segments

Once the two semi-circles are dry, he lightly glues the bottom of each semi-circle to a prepared piece of 1/8" plywood, on which are drawn the perpendicular centerlines of a correspondingly-sized semi-circle, with a small hole drilled at the center point, which is the pivot hole for step (5).



Glued-Up Segments

The amazing thing to me at this point, is that the sides of the segments as they came directly off the bandsaw were so smooth that he was able to glue them together with no edge preparation! I believe that the key to this ability was the bandsaw setup. I noticed that the blade tension was extremely tight, and that all of the roller guides were touching the blade (all of which is against common preaching – but it works). He did not recall the manufacturer of his blade, but it is 1/4" wide with 6 tpi. His bandsaw is a relatively new 14" Rikon model 10-326, but he has used other older smaller bandsaws in the past.

Step (5) is band sawing the glued semi-circles into slices which become the sides for one-half of the bowl. This is where Larry's second jig comes into play.

It is a fully adjustable jig that is used to mount and locate the semi-circle with the glued segments onto the bandsaw in the appropriate position for the particular bowl size. The bandsaw table is first set to an appropriate angle (say 5 degrees to 15 degrees, depending on the bowl design). The first semi-circle is then mounted onto the jig with its pivot hole located on a pin on the jig. He slowly rotates the semi-circle through 180 degrees as the bandsaw cuts off a slice.



Glued Bowl Segments at Band Saw

The second semi-circle is then cut in the same way with the same setup. (By then adjusting the jig position, additional slices can be made for progressively smaller bowls). After both semi-circle slices are cut, he glues them together and sands the inside with a spindle sander or by hand. Finally he cuts and glues on the bottom of the bowl, and then sands the outside. There is surprisingly little sanding actually involved, mainly due to his accurate bandsaw work using his jigs.

That description is for a very simple open-topped bowl. But Larry typically combines many such elements together to make bowls of various contours, shapes, and designs.



Cutting Bowl Rings



He is expert at putting intricate and colorful inlays into segments, creating astonishingly beautiful bowls. One of his bowls was shown in the May 2023 issue of Wood Magazine.

He also uses variations on his techniques to make a wide range of objects, such as pitchers, ornaments, vases, lamps, hats, and more things than many of us can imagine.



Larry Buettner's Bowls

As judged by the high level of member enthusiasm shown throughout Larry's presentation, it was quite obvious that his talent and creativity were very much appreciated.

- Jerry Romito



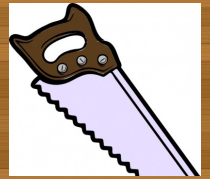
LARRY BUETTNER of Waterford, Michigan, has been woodworking for over 45 years. He crafted this segmented vase using a bandsaw and careful sanding—no lathe required!



SEND US A PHOTO OF YOUR WORK



WOODWORK NOTES



MWG Apparel Availability

After a hiatus following Covid, we are again offering Michigan Woodworkers' Guild clothing apparel including different types of shirts and a baseball cap. The items include the embroidered MWG logo and a map of the state.

Available are Denim long sleeve shirts in either light or dark blue. We also have Poplin shirts in long or short sleeves in various colors and we can get polo type shirts.

The cost of a shirt is \$30 and includes the logo, you can also include your name on a shirt for an extra cost of \$5. Baseball style caps as shown in the picture are \$16 which includes the MWG logo.

There are benefits to having a MWG shirt such as showing your pride in being part of a wonderful group of woodworkers and if you have your name on the shirt, you still get 2 raffle tickets per dollar even if you forget your official MWG name tag.

For more information, please see **Ron Ross** at any meeting or at: ross1508@gmail.com.



MWG Cap



CHILDREN'S HOSPITAL MWG PROGRAM UPDATE



From Ron and Dan

Toy and Box Makers:

We are now stocking a new item on a trial basis. We have treaded 1", 1 1/4" and 1 1/2" wheels to enhance your toy making designs. They are about 40% wider than standard wheels with a more realistic look. Although these are quite a bit more expensive than standard wheels, they do give that little bit of extra oomph to your vehicles. And they use the standard 1/4" dia wheel pegs and Nylon washers that the Guild supplies. I have included pictures of the treaded wheels along with one of my recently made old school Indy/Sprint car racers made from cherry using the treaded wheels. Made of a lesser wood such as poplar, painted in a bright color with a circled number emblazoned on the hood these old school race cars would make quite the hit with children. Just saying...



MWG Treaded Wheels



MWG Indy Racecar

I have already heard from one toymaker about his plans for this year. He has several articulated construction type vehicles planned. Hopefully, we will have some completed samples to photograph by the year's end.

Those of you who purchase or subscribe to *Fine Woodworking*, the current issue (June 2023 #303) has a good article on small box making. Author **Barry Nm Dima** recently made a kitchen salt box as a gift.

The mitered corners were cut using a router set-up rather than on a table saw. When gluing up he aligns the pieces flat and uses masking tape as clamps. If I am not mistaken this is very similar to a technique shown by member Clay Buldoc a few years ago at one of our monthly meetings.

With that being said, November is only 6 months away. For those of us with workshops in the garage, this is a perfect time of year to get a jump on wood-working projects. Working in small batches production style, simple toys can be made in less than a few hours apiece on average.

We will once again be sponsoring a Toy Contest this year. The rules will pretty much follow last year's rules. During the social hour prior to our live November meeting, we will be accepting from each toymaker your best toy (only one per maker) for competition. A group of distinguished judges, picked/volunteered from the MWG, will peruse the entrants and pick three winners. In the interest of remaining impartial, if you submit a toy you will not be a judge. The winning categories will be:

1. Best overall design
2. Best painted finish
3. Best clear (stained/varnished) finish

Here's your chance to showcase your skills at designing and building toys, showing off your world class painting skills and perhaps using that special piece of burl or quarter sawn chunk you have been saving with a beautiful clear finish. Of course, all the normal rules for toy making apply to this contest, no metal parts, no sharp or pointed edges and only approved glues and finishes.

We will be accepting only one toy for each maker; the judge's decision will be final and the winners in each category will be awarded a \$25 gift certificate from Rockler. After the judging and awarding of prizes, toys will be retained and included in the donation to the Children's Hospital for the Snowpile Program.

We will also expand the contest this year to include a category for Best Memory Box. There will be 2 prizes



awarded, one for best finish and one for best design. More details will be forthcoming.

In planning your toy or box making, please remember to follow the guidelines listed in our website. With so many government regulations coming forward we have to be very careful that toys and boxes conform to the appropriate standards. Within the Toy Project section under the Programs/Resources tab, click on the link "Toy Guidelines for Children's Hospital" for more specific requirements.

As has always been the policy, the Guild will provide standard wheels (1", 1 1/4" or 1 1/2" dia) along with the new treaded wheels, 1/2" OD nylon washers and 1/4" dia. wheel pegs free of charge to any member who wishes to make toys for this program. We do have a fair supply of the treaded wheels at this time and should they be a big hit, we will arrange to have more in the years to come. Any of these items can be obtained by contacting Ron or Dan.

The Guild still has an inventory of non-standard wheels and other toy parts that have been recently categorized. While we do have a limited supply and do not plan to re-stock these once the current supply runs out, we currently have;

- 1 3/4", 2", 2 1/4", 2 1/2", 2 3/4" and 3" diameter standard style wheels
- 2", 2 1/4", 2 1/2" and 2 3/4" diameter treaded tire style wheels
- 2" and 2 3/4" diameter wagon style wheels
- 1 1/4", 1 1/2" and 2 1/4" diameter flanged style train wheels
- Wood shapes such as acorns, beads, balls, caps and discs
- Large and small shaker style pegs
- Three sizes of wood peg people
- Steam engine/steam train parts and smokestacks
- Various small pieces of poplar, suitable for glue-up

These specialty items can also be obtained by calling either Ron or Dan. We will also bring some of these items to Guild meetings on a regular basis.

We will continue to set a goal of delivering 400 toys to Children's Hospital for the Christmas Snowpile program. This program is only a part of the toy distribution. Throughout the year a fair amount of simpler toys are distributed to all the clinics within the Children's Hospital Complex. These toys are used by the children in the waiting rooms as they wait to see a specialist or treatment. Some toys are passed out to siblings of child patients when they come to visit. Other toys stay with the children when they are released from the hospital. The hospital also has a need for boxes, both plain ones, which the children can use for activities during their hospital stay and somewhat fancier boxes, usually made with hardwoods and more intricate joinery, which are presented to family members of children who did not survive their afflictions. The hospital does like boxes that are about the size of a shoebox. Also the picture frames on top of the memory boxes are well liked by the hospital staff but not necessary.

Once again, thanking all of you toy makers for your support along with the Guild's board for allowing funding to purchase wheels to distribute free of charge to all the makers.

Happy Toymaking.

For further information on our toy program, request wheels and axles or to arrange to drop off toys, please contact

Ron - 734- 812-5531 - rross1508@gmail.com

Dan - 313-702-5836 - dan56laura@att.net





DUSTY HUMOR

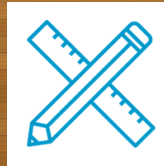


- **Want to know how to become a good woodworker?**
Just take it whittle by whittle.
- **I know a few jokes about carpentry...**
I just wasn't sure if they woodwork.
- **What do corporate woodworkers do when they need to discuss their next project?**
They have a board meeting!

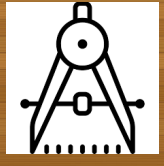
These phrases are provided purely for your humorous enjoyment. Feel free to send your favorite woodworking pun to the MWG Newsletter Editor for possible future publication.



MWG Cap



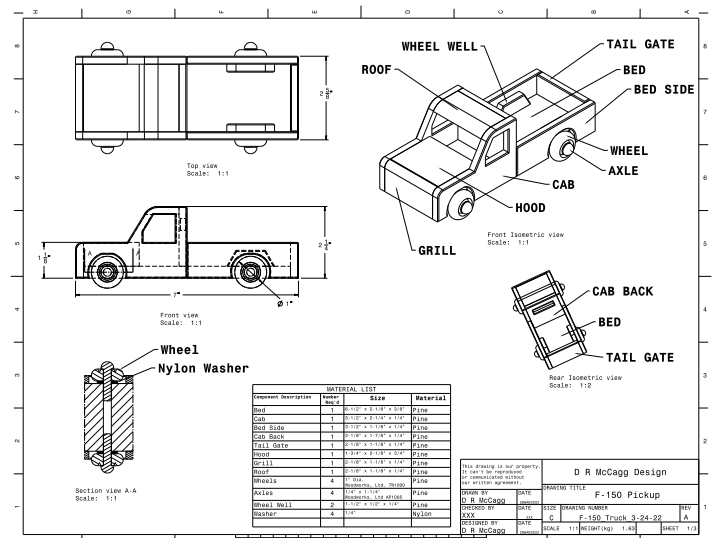
MWG DESIGN CENTER



From the Editor

Thanks to the wonderful review and outstanding suggestions from member **Charlie Andrews**, the F-150 pickup truck shown in the December 2022 MWG newsletter, has been redesigned. The truck now features a higher cab and fewer parts, thus easing the construction process.

Download the plans from the Guild's website using the link shown below, then build a dozen or so with MWG supplied wheels, axles, and nylon washers to support the Toy Program (see Dan Holowicki's article above).



You can find the MWG **Pickup Truck** plans on the MWG website with the following link:

https://michiganwoodworkersguild.com/wp-content/uploads/toys/F-150_Pickup_Assembly_4-22-23.pdf



JIG OF THE MONTH!



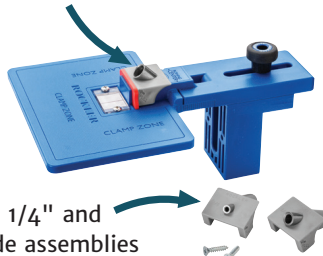
Beautify and strengthen mitered joints using dowels at a 45° angle!

\$29⁹⁹

CORNER KEY DOWELING JIG

Reg. \$39.99 SKU: 59517

Guides make it easy to drill angled holes for decorative dowels across mitered corners



Includes 1/8", 1/4" and 3/8" drill guide assemblies



HAVE YOU
SEEN THIS?

\$12⁹⁹

UNIVERSAL FENCE CLAMPS

Reg. \$24.99 SKU: 31373

WHILE SUPPLIES LAST

SAVE OVER
45%



NEW, IMPROVED, AND AWARD-WINNING!

One hose "clicks" into a dedicated FlexiPort, which locks onto each tool. Ideal for bench top projects!



\$49⁹⁹

DUST RIGHT FLEXIPORT POWER TOOL HOSE KIT, 3' TO 12' EXPANDABLE HOSE

SKU: 68966

SPRING STOCK UP SALE PRICING VALID 4/28 - 6/1/23

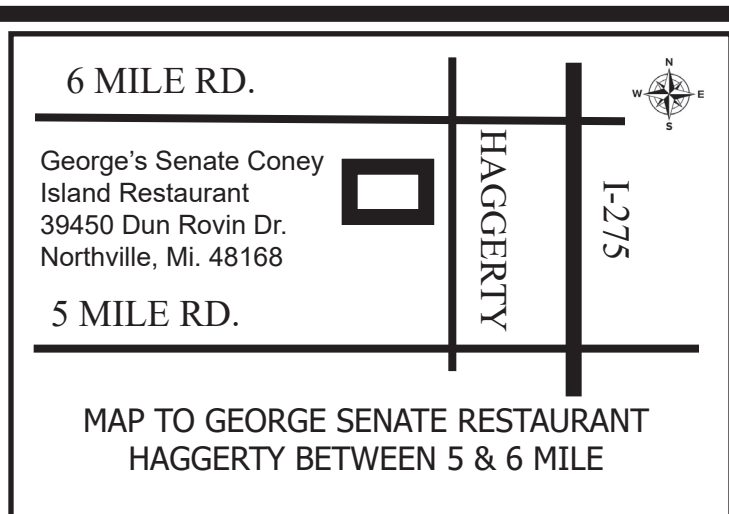
26160 Ingersol Drive • Novi, MI 48375 • (248) 543-5110 • Rockler.com

Please check Rockler.com for current store hours.

For membership information contact

Dave McCagg at: d2mccagg@provide.net

For name tags, sign up with Ed Stuckey at a regular meeting.



Next MWG Luncheon: (Coordinated by TBD)
Thursday, 25 May 2023 at 10:16 AM

Executive Board Members / Committee Chairs

Jerry Romito.....	President.....	248-475-5976
Dan Holowicki.....	Vice President.....	734-283-9898
Ed Stuckey.....	Treasurer.....	313-345-3671
Don Hess.....	Secretary.....	734-207-8427
Dan Holowicki.....	Officer at Large.....	734-283-9898
Tony Gigliotti	Officer at Large	248-853-8349
Bill Gayde	Officer at Large	248-859-3949
Ron Ross.....	Officer at Large.....	734-812-5531
Rich Herbert.....	Officer at Large.....	248-628-0644
Ragnar Bergethon...	Officer at Large.....	248-608-8436
Ken Wolf.....	Officer at Large.....	734-981-3423
Dave McCagg.....	Officer at Large.....	734-482-6764
Tim Kolassa	Library	248-765-3758
Dave McCagg.....	Newsletter Editor.....	734-482-6764
Dave McCagg.....	Membership.....	734-482-6764
Larry Last..	Programs/Website Calendar....	248-207-9386
Bob Mills.....	Mentoring.....	248-535-6718
Kevin Guolet	Camera Chair	248-672-5341
Fred Ball....	Web Site Calendar (Backup).....	248-681-3108
Ron Ross.....	Toy Program.....	734-812-5531
Kevin Guolet.....	Officer at Large.....	248-672-5341
Kevin Guolet.....	Food Coordinator.....	248-672-5341