



# MICHIGAN WOODWORKER

michiganwoodworkersguild.com



Michigan Woodworkers' Guild (est. 1981) May 2024 Vol. 45 No. 5

## When / Where:

### SUNDAY, MAY 19, 2024

(Socializing Starts at 1:00 PM, Business Meeting Starts at 2:00 PM)

## In-Person Meeting:

### Fixing Mistakes

by Gary Rogowski

Meeting Coordinated by: Jerry Romito



IN-PERSON MEETING AT:  
Livonia Senior Center

## MAY:

Coordinated by MWG President **Jerry Romito**, phenomenal woodworker **Gary Rogowski** will demonstrate many inspiring techniques to "Fix Mistakes" which we all encounter. Join us Sunday, May 19<sup>th</sup> at 1:00 PM at the Livonia Senior Center.

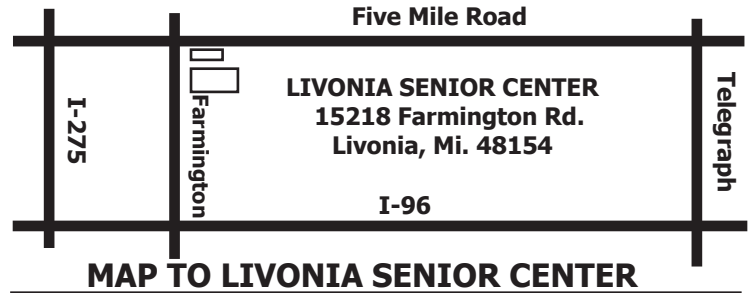
## JUNE:

Join your fellow MWG members in a one of a kind tour of the exclusive Ford Fairlane estate. Coordinate by **Dan Holowicki**, our June 15<sup>th</sup> Field trip will start at 10:00 AM. Due to logistics, the tour is restricted to 30 people so sign up early with Dan at the April meeting.

## JULY:

**NO MEETING IS SCHEDULED FOR JULY**

Due to the summer shutdown, there is no July member meeting. All are encouraged to enjoy the month with family and friends as well as making more sawdust.



## MAP TO LIVONIA SENIOR CENTER

### May MWG Member Meeting

## Fixing Mistakes by Gary Rogowski

# May 19<sup>th</sup>

**Gary Rogowski**, furniture maker, author, and teacher, will teach us how to fix our woodworking mistakes in this Zoom Meeting at the Livonia Senior Center. Coordinated by **Jerry Romito**, Gary will impart his many years of experience to fix stupid mistakes, boo-boos, and whoppers. See above for meeting start time.

## Happy Memorial Day!





## President's Corner

By Jerry Romito



May 2024

### The Art of Chair Making

The **Tom McLaughlin** seminar on the **Art of Chair Making** is past us now. It was a resounding success, with 63 members registered, 61 attending, and 15 of those becoming new MWG members. We all got to interact with Tom and his gracious wife **Kris**, the “camera lady” of Epic Woodworking fame, and there was plenty of food and beverage to last throughout the day. **Ken Wolf** is writing a detailed seminar review, which will appear in the June newsletter along with photos taken by **Dan Holowicki**. I want to thank **Ragnar Bergethon** for arranging to bring Tom to us and our Board of Directors for all of their work to make the day run smoothly.

### A Special May Meeting

Be sure to mark your calendar for our special and unique **May 19** meeting. We will be featuring **Gary Rogowski** via a live Zoom meeting from his shop on the west coast. Gary is a furniture maker, author, and teacher. His books include *The Complete Illustrated Guide to Joinery*, Taunton Press, and *Handmade: Creative Focus in the Age of Distraction*, Linden Press. His presentation will be on “Fixing Mistakes”. He says “Now there are many woodworkers who claim that they are already good at making mistakes. On that, they don’t need a course. My years of experience makes me quite the expert on fixing stupid mistakes, boo-boos, whoppers, and the like. I have perhaps invented some solutions that your group might like to try out”.

The meeting will be live at the **Livonia Senior Center** as we watch Gary on Zoom. There is good news for those of you who cannot attend in person.

I will be emailing the Zoom link to all of you, so you can watch the presentation remotely from anywhere on your own devices. In addition, Gary will record his presentation and send us a link, so we can all watch it at any time after the meeting. You can’t beat those arrangements! I still hope that many of you will attend live to enjoy the regular camaraderie of our meetings. Watch your emails for further information from me.

Jerry Romito  
MWG President

**ODETTE FERGUSON**  
SALES REPRESENTATIVE  
E-mail: [odette@sawspec.com](mailto:odette@sawspec.com)

**Saw & Specialty Corporation**  
Saw Service Centers  
“EXCLUSIVELY SAWS SINCE 1919”  
10555 Shook Rd. P.O. Box 74438  
Romulus, Michigan 48174-0438  
[www.sawspec.com](http://www.sawspec.com)

Your single source for all  
your sawing needs...from  
coolants to machinery

Voice  
800-SAW-SPEC  
800-729-7732  
734-941-2824  
Cell  
734-740-1691  
Fax  
734-941-2883

Member of  
Industrial Distributors Association  
International Saw & Knife Association



**MARSH POWER TOOLS**  
SALES AND AUTHORIZED FACTORY SERVICE

<b>20579 Middlebelt</b> <b>Livonia, MI 48152</b> <b>(248) 476-7744</b>	<b>7187 Grand River Ave.</b> <b>Brighton, MI 48114</b> <b>(810) 220-1122</b>
--	--

**Fax: (248) 476-1090**

**GLENN WING**  
POWER TOOLS

33656 Woodward Ave.  
Birmingham, MI 48009  
(248) 644-0444  
(248) 644-5790 Fax  
(800) 821-5177 (US)  
(800) 448-1572 (MI)

Jeff Wilmot



## MEETING REVIEW



By Dale Aushman

### MWG Meeting Review

YouTube Videos and Show & Tell  
Livonia MI, 10 March 2024

Our original plan for the March meeting was a presentation by the Novi Rockler staff discussing some of their Tool Designs. This meeting had to be cancelled due to staffing changes at the Novi store. Instead our talented and resourceful President **Jerry Romito** quickly arranged for presentation of several favorite YouTube woodworking videos, along with show & tell presentations of several member projects.

Jerry's chosen YouTube videos and their respective Urls are listed here. There are videos on jointer and miter saw machine safety, bandsaw blade set up, glue squeeze out cleanup, and various woodworking myths.

#### Safety videos:

WGOA: Jointer safety (4:12)

<https://www.youtube.com/watch?v=3d1qBxcnI0E>

WGOA: Miter Saw Safety Tips (2:11)

<https://www.youtube.com/watch?v=xHq3IrbzSwk>

#### Band saw blade setting videos:

**Michael Fortune:** (play from 0:00 - 1:30)

<https://www.youtube.com/watch?v=vNdrkmx6ehl>

**Alex Snodgrass:** (play from 3:40 – 5:06)

<https://www.youtube.com/watch?v=wGbZqWac0jU>

**Stumpy Nubs:** (play from 1:00 – 2:20)

<https://www.youtube.com/watch?v=tPRrEgnt7wM>

**Rob Cosman:** Woodworking Myths (13:05)

<https://www.youtube.com/watch?v=66Xfn-anxgg>

**WGOA:** Cleaning Up Squeeze Out (5:00)

(Shown Below)

You can find WGOA: Cleaning Up Squeeze Out video with the following link:

[https://www.wgoa.com/video/cleaning-up-squeeze-out-040242/?utm\\_source=newsletter&utm\\_medium=email&utm\\_campaign=a6134&vsoid=a6134](https://www.wgoa.com/video/cleaning-up-squeeze-out-040242/?utm_source=newsletter&utm_medium=email&utm_campaign=a6134&vsoid=a6134)

**Stumpy Nubs:** This Should End the Saw Blade Height Debate (5:43)

<https://www.youtube.com/watch?v=bK6twlui4Gw&t=123s>

**Flammy's Wood:** How to Craft A Woven Cutting Board (8:20)

<https://www.youtube.com/watch?v=eYdbrd8a5bU>

Members are encouraged to click on these links and watch the videos. It was very interesting to note that various videos disagreed on some machine set up parameters and the answers to some of the myths.



Larry Last With Trellis

Show and tell projects started with **Larry Last** making inexpensive garden trellises. Larry buys a pair of Home Depot 5/8 in x 5-1/2 in x 6 ft. pressure treated pine dog ear fence picket boards (\$2 each) to make each trellis. He cuts off the top "dog ear" portion, then rips each board into three 1-11/16 in widths. Five of these strips with the fewest knots are stacked and





joined in a fan shape, held together at the lower end by two ¼ in. carriage bolts. The sixth strip is cut into 32 in, 21 in, and 12 in. cross slats, which are screwed across the fan-spread to make the finished trellis. Larry uses spacer boards to speed the construction process. The simple process is essentially self-describing, but Larry has supplied a set of charts which give details of the hardware required and the assembly process including spacing of the cross slats. If the trellis is to be free standing one can fasten a stake to the bottom. Larry has made enough of these trellises that he can make one in about 20 minutes!



Tom Duke With Hand Made Bench

MWG member **Thomas Duke** next wowed us with a country Mexican wooden bench. Made of incredibly nice Walnut harvested in Mexico, the wonderfully designed bench was made largely with hand tools. Tom purposefully left some milling marks in the project to add character. He built this bench entirely from photos without making paper plans, just laying it out directly on the wood pieces. He cut the seat-back and seat-apron scallops using a coping saw followed by a spindle sander. Tom included in his design arts and craft-style exposed through tenons and pegs, which add greatly to the beauty of the piece.

**Chuck Andrews** lightened up the meeting by showing his wooden Rube-Goldberg-like marble tower. The fun tower was built from plans available from Forest Street Designs.

<https://www.foreststreetdesigns.com/product/marble-tower-woodworking-plan-full-size-patterns/>



Chuck Andrews with Marble Tower

Marbles automatically release every 2 seconds to cascade down and around a network of troughs, ramps and over a xylophone. Marbles ring bells, spin paddles and trip levers all the way down the 41 in. tall tower. Full size plans are available for about \$18. The website has YouTube links showing other customer's completed towers in action. Chuck did a beautiful job building and finishing the tower. Children and grandchildren would love this tower. We adults surely did!

A Veritas Hand Jointer jig specifically for Lee Valley medium and large shoulder planes was demonstrated by **Dan Holowicki**. The jig enables very safe hand jointing of small parts such as for small boxes. It is like a shooting plane fixture for shoulder planes! The 10" x 2" low-friction HDPE (high-density polyethylene) fence makes it easy to align work square to the blade. Multiple mounting holes let you orient the





Dans Plane Fixture

plane for right- or left-hand use, securing it via the plane's through-hole using a brass knob. The large bottom section of the panel provides plenty of surface area for clamping the hand jointer horizontally to a bench top or vertically in a front vise. While the Veritas jig is made specifically for the two Lee Valley shoulder planes, with mounting holes and the knurled brass attachment bolt, I plan to explore adding custom mounting hardware (threaded inserts or the like) so that my Lie Nielsen large shoulder plane would work as well. This seems like a great item for my next Christmas wish list.



Shell Eco-Marathon Trophy Car

**Dave McCagg** shared two clever items: A wooden car trophy and a plastic chamfer gauge. He makes the wooden cars (about twice the size as our toy program cars) as award trophies for Shell Eco-Marathon key organizers. The natural wood finish cars are engraved with their names, and some wording on the

back trunk which identifies with the individual. The second item is a playing-card-sized chamfer gauge with a different size chamfer ( $1/8$ ,  $1/16$ ,  $1/32$ ,  $3/32$ ,  $3/16$ ,  $1/4$  in) on each edge. This allows one see how a particular size chamfer will look on a prospective project and to set up their router table with the chamfer. The size for each edge is engraved near the edge.



Ken Wolf with Clamping System

And what would a Guild show & tell session be without a marvelous new invention from the **Thomas Edison** of woodworking jigs? **Ken Wolf** did not let us down. His panel clamping cauls were made from pairs of cut-to-length Unistrut-type 10 ft. half slot channel struts from Menard's. These struts are normally used in construction for supporting and framing lightweight structural loads such as electrical conduit and the like. Ken's pieces were nicely finished from the store in shiny black. He clamped the two using large 5" long  $1/2$ " carriage bolts, with Ken-designed large wooden "wing" nuts which could be closed quickly by spinning the nuts like little propellers. He also made a pair of wooden stands for each clamping set, with plywood bases for stability and neighboring pairs of dowels which formed tenons that inserted nicely into





the channel half slots. These panel clamps provide the same function as the Woodpeckers CLAMPZILLA clamping rails except the Clampzilla rails have the scissors joint at each end which provides both lateral and vertical pressure.



Clamping Cauls on Wooden Stands

- Ken also provided information from the Stumpy Nubs site on how to clean dried glue from woodworking clamps:
- Mix equal parts white vinegar, water and acetone
- Wearing nitrile gloves, apply mixture with rag to dried glue areas
- Wrap treated areas with saran wrap and wait for 10-15 minutes
- Wipe off dried glue with a clean rag (gloves still on)

#### How to Clean Dried Glue From Woodworking Clamps

Stumpy Nubs Method (From Internet)

Mix equal parts White Vinegar, Water and Acetone  
Wearing nitrile gloves, apply mixture with a rag to dried glue areas  
Wrap treated areas with saran wrap and wait for 10-15 minutes  
Wipe off dried glue with a clean rag (gloves still on)

This method also can help remove dry glue from cloth

#### Ken Wolf Dried Glue Removal Recipe

We thank President Jerry for quickly arranging this substitute program and YouTube videos. We are indebted to show and tell presenters **Larry Last, Tom Duke, Chuck Andrews, Dan Holowicki, Dave McCagg,** and **Ken Wolf** for their presentations. Thanks also is due to **Kevin Goulet** and **Dave McCagg** for the video projection of the presentations, and to Dan Holowicki for the photography.

- Dale Aushman



#### HOMESTEAD HARDWOODS

PHIL & DAVE



homesteadhfc@yahoo.com

4607 Allen RD, Allen Park, MI 48101

KILN DRIED LUMBER, HARDWOODS,  
SLABS, EXOTIC LUMBER

313-418-8052

www.hardwoodsinallenpark.com



## News from the Toy and Box Committee

I am writing this the day after MWG's annual professional seminar with renowned furniture maker and mentor **Tom McLaughlin**. What an inspiring all day seminar it was. He has a no nonsense approach to jigs and fixtures needed to aid in making joinery or complex shapes. His skills with power and hand tools are second to none. His easy style, attention to detail, personable attitude and willingness to pass on his craft were just some of the reasons why this was an enjoyable day with so many other woodworkers. While his topics had nothing to do with toys or boxes, seeing a professional's willingness to display his skills can easily inspire all in attendance to be better woodworkers and try making something outside of our comfort zone. For me it may be a casual dining table and chairs. Maybe for someone else it may be toys or boxes. Who knows?

We did have a display of toys and boxes for the Children's Hospital Snowpile program for attendees to view and ask about. There were quite a few new members present at the seminar, I also noted many attendees stopping by the display and admiring the samples, including **Tom McLaughlin** and his wife Kris the "camera lady".



2024 Seminar Toy Display



2024 Seminar Memory Box Display

I have stated the need and comfort that the toys and boxes bring to children who are undergoing treatment for serious short and long term afflictions. Any member who wishes to be a part of this program can find plenty of easy plans on our website or peruse many publications available with plans for toys of all sorts along with simple boxes that will make a child feeling lonely and uncomfortable in a hospital situation feel a bit more relaxed going about daily activities. It is not too early to start planning your toy or box building activities for this year. Soon it will be summer when many of us take a break from the shop. In a few short months, the fall will be upon us and we will be in a rush to get back to the shop for projects, gifts, and all sorts of other woodworking activities. Plan early.

As has always been the policy, the Guild will provide standard wheels (1", 1 1/4" or 1 1/2" dia) along with the new treaded wheels, 1/2" OD nylon washers and 1/4" dia. wheel pegs free of charge to any member who wishes to make toys for this program. We do have a fair supply of the treaded wheels at this time and should they be a big hit, we will arrange to have more in the years to come. Any of these items can be obtained by contacting Ron or Dan.

The Guild still has an inventory of non-standard wheels and other toy parts that have been recently categorized. There has been a good response to these non-standard items and once they are gone, they will not be replaced.

- 1 3/4", 2", 2 1/4", 2 1/2", 2 3/4" and 3" diameter standard style wheels





- 2", 2 1/4", 2 1/2" and 2 3/4" diameter treaded tire style wheels
- 2" and 2 3/4" diameter wagon style wheels
- 1 1/4", 1 1/2" and 2 1/4" diameter flanged style train wheels
- Wood shapes such as acorns, beads, balls, caps and discs
- Large and small shaker style pegs
- Three sizes of wood peg people
- Steam engine/steam train smokestacks

We do bring a small amount of select items from this stockpile to Guild meetings on a regular basis. However, if you have a specific need, please contact Ron or Dan for the amount and to arrange delivery. Once again, a great big thank-you to those who contributed to last year's success.

For further information on our toy/box program or request wheels and axels, please contact

Ron - 734- 812-5531 - [rross1508@gmail.com](mailto:rross1508@gmail.com)

Dan - 313-702-5836 - [dan56laura@att.net](mailto:dan56laura@att.net)



- I went to a woodworking class, but didn't get much done.  
The whole thing was just a **dovetail**.
- Why did the carpenter become a lawyer?  
He was tired of being **nailed** all the time.
- What kind of music do woodworkers listen to?  
**Chopsticks**.

These phrases are provided purely for your humorous enjoyment. Feel free to send your favorite woodworking pun to the MWG Newsletter Editor for possible future publication.

## IN MEMORIUM



Roy Juhl

We are sad to report that MWG member **Roy A. Juhl** passed away on April 13, 2024. He was 90 years old and a guild member for 23 years.

Roy, a resident of Rochester Hills, served in the United States Air Force at Kimpo Airfield, Seoul Korea and Andrews Air Force base in Washington, D.C. Later he joined the Oakland County Sheriff's Department then became a renowned businessman running the family business, Rochester Glass.



Roy was an expert high-end toy maker.

You can read Roy's obituary at:

<https://www.dignitymemorial.com/obituaries/rochester-mi/roy-juhl-11771234>





## MWG June 2024 Field Trip / Tour

### Fair Lane – The Home of Henry Ford



Fair Lane Mansion

On June 15<sup>th</sup> 2024 at 10 am, MWG members will have a chance to tour the Fair Lane mansion built for **Henry Ford** and his wife **Clara**. This tour will last approximately 2 hours and will feature many of the areas of the mansion currently under renovation. As of this time Fair Lane is currently closed to public tours (since 2010). There is a \$10 fee for the tour and we are limited to 30 individuals.

A bit of history about Fair Lane.

The 31,000 square foot, 56 room house was built between 1913 and 1915 in the Prairie Style. The original estate consisted of 1300 acres bordering the Rouge River in Dearborn, MI. **Frank Lloyd Wright** was commissioned by Henry and Clara to design the mansion. However, with his departure to Europe, one of his first female architecture students, **Marion Mahoney Griffin** was placed in charge of seeing to the final designs. After some disputes with interpretation, architects **William H. Van Tine** and later **Joseph Nathaniel French** were brought on board to see the project through to completion. The exterior of the mansion is limestone, with a slate roof. The interior rooms of the house feature many intricate wood carvings, exotic wood paneling and other details. Other structures on the property included a powerhouse with an underground tunnel to the main house, garage, horse stables, boathouse, children's

playhouse and many gardens designed by Chicago architect **Jens Jensen**. The Ford's lived there until their passing in 1947 (Henry) and 1950 (Clara). In 1957, the estate was donated to the University of Michigan for the establishment of a new Dearborn campus. In 2010, public tours were ended to begin a multi-million dollar renovation and re-imagining of the home and grounds involving work by world class artisans and specialists. Many major upgrades to the estate's infrastructure continue today. Certain private events are allowed, however. In 2013, the stewardship of the estate was transferred to the Historic Ford Estates, the same non-profit group that operates the lakeside Edsel and Eleanor Ford House in Grosse Pointe, MI. The Ford Family continues with financial help to both estates. Fair Lane is a National Historic Landmark and is preserved as such.

Fair Lane is located on the campus of The University of Michigan – Dearborn and is accessed from Hubbard Drive. The address is 1 Fair Lane Drive, Dear-



Fair Lane from U of M Grounds

born MI. In addition to the mansion tour, the grounds surrounding the mansion are open to the public and can be viewed at your leisure.

We have reached our Henry Ford Staff imposed maximum attendance of 30 for the Fair Lane tour. A reminder to those who have not paid yet that payment is due by May 19th. If you will be at the May meeting payment can be made to **Dan Holowicki** at that time. If not, please contact Dan for other arrangements. Dan is also accepting names for a standby list. Dan can be reached at 313-702-5836.



Rouge River on U of M Grounds

If you are interested in the tour, you can call **Dan Holowicki** at (313) 702-5836. Dan will also be passing around a signup sheet during the April and May meetings. The June 15<sup>th</sup> 2024 tour starts at **10:00 AM** and costs \$10. We are limited to 30 on a first come basis. Photography is allowed but no flash. The registration will be closed after the May meeting; payment will be due at that time.



Michigan Woodworker's Guild yearly dues are now payable.

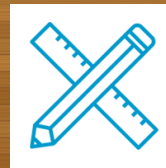
Feel free to get on-top of the renewal process by paying your \$25 yearly dues Early and Often.

Thank you to everyone who responded to the email message and made payments through the MWG website as well as by sending your dues payment to the membership chair.

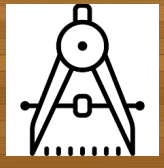
Note: A membership renewal form can be found on the website dropdown menu under "Membership - Payment/Renewals"

You can find the Ken's Axle Painting fixture on the MWG website with the following link:

[https://michiganwoodworkersguild.com/wp-content/uploads/designs/Ken\\_Wolfs\\_Axle\\_Coating\\_Fixture\\_2-17-21.pdf](https://michiganwoodworkersguild.com/wp-content/uploads/designs/Ken_Wolfs_Axle_Coating_Fixture_2-17-21.pdf)



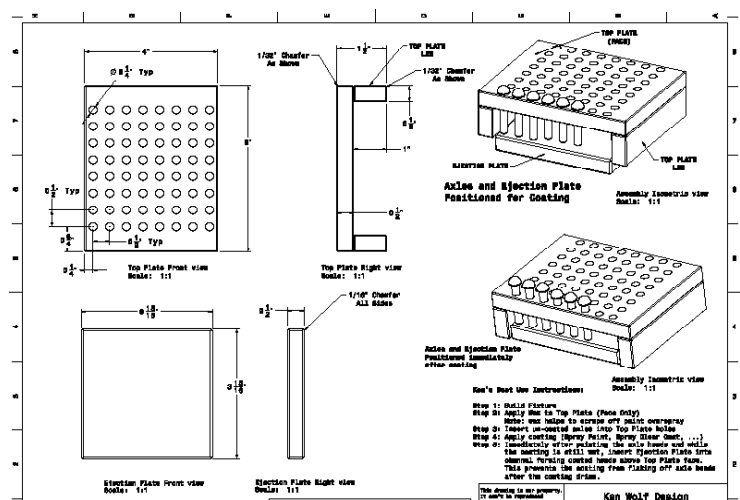
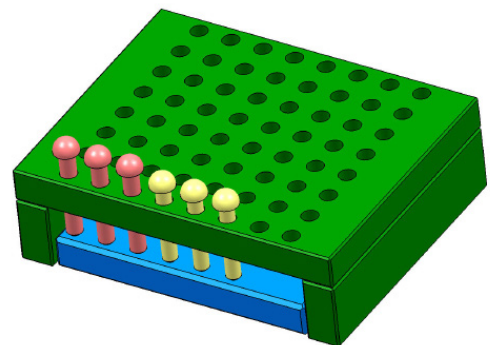
**MWG  
DESIGN  
CENTER**



## From the Editor

In support of the MWG Toy Program, **Ken Wolf** has developed several jigs and fixtures to help in the easy construction of multiple toys. Primarily, Ken has constructed jigs to coat both axle heads as well as wheels.

Below is Ken's jig to coat axle heads. It has been initially designed in CAD from which detailed drawings were made followed by a physical sample. For a detailed drawing of this jig please see the MWG website.







**Donate “Any Tool, Any Condition”**

**For membership information contact**

**Dave McCagg at: [d2mccagg@provide.net](mailto:d2mccagg@provide.net)**

**For name tags, sign up with Ed Stuckey at a regular meeting.**

**Executive Board Members / Committee Chairs**

Jerry Romito.....	President.....	248-475-5976
Dan Holowicki.....	Vice President.....	734-283-9898
Ed Stuckey.....	Treasurer.....	313-345-3671
John Dolinsky.....	Secretary.....	734-945-6461
Dan Holowicki.....	Officer at Large.....	734-283-9898
Tony Gigliotti .....	Officer at Large .....	248-853-8349
Bill Gayde .....	Officer at Large .....	248-859-3949
Ron Ross.....	Officer at Large.....	734-812-5531
Rich Herbert.....	Officer at Large.....	248-628-0644
Ragnar Bergethon...	Officer at Large.....	248-608-8436
Ken Wolf.....	Officer at Large.....	734-981-3423
Dave McCagg.....	Officer at Large.....	734-482-6764
Ragnar Bergethon..	Website .....	248-608-8436
Dave McCagg.....	Newsletter Editor.....	734-482-6764
Dave McCagg.....	Membership.....	734-482-6764
Larry Last..	Programs/Website Calendar....	248-207-9386
Bob Mills.....	Mentoring.....	248-535-6718
Kevin Goulet .....	Camera Chair .....	248-672-5341
Fred Ball....	Web Site Calendar (Backup).....	248-681-3108
Ron Ross.....	Toy Program.....	734-812-5531
Kevin Goulet.....	Officer at Large.....	248-672-5341
Kevin Goulet.....	Food Coordinator.....	248-672-5341

6 MILE RD.

George's Senate Coney  
Island Restaurant  
39450 Dun Rovin Dr.  
Northville, Mi. 48168

5 MILE RD.

HAGGERTY

I-275

MAP TO GEORGE SENATE RESTAURANT  
HAGGERTY BETWEEN 5 & 6 MILE

Next MWG Luncheon: (Coordinated by TBD)  
**Thursday, 23 MAY 2024 at 10:16 AM**