



MICHIGAN WOODWORKER

michiganwoodworkersguild.com



Michigan Woodworkers' Guild (est. 1981) May 2025 Vol. 46 No. 5

When / Where:

SUNDAY, MAY 18, 2025

(Socializing Starts at 1:00 PM and Business meeting at 2:00 PM)

In-Person Meeting:

A Primer on Inlay by Jeff Street

Meeting Coordinated by: Larry Last



IN-PERSON MEETING AT:
Livonia Senior Center

**PAY YOUR 2025 MWG DUES
TODAY! (SEE PG 2)**

May 2025:

Jeff Street will present the basic description, process, tools, and materials used to create Inlays. He will review String Inlays, highlighting, and geometric shapes.

Coordinated by **Larry Last**, all starts at **1:00 PM, May 18th 2025** at Livonia Senior Center.

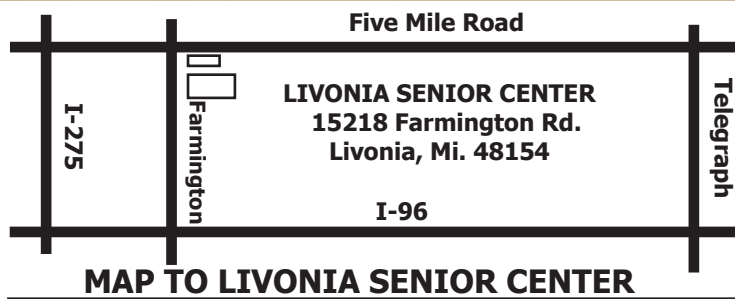
June 2025:

Join us **June 7th** for our 2025 Field Trip to **Stahls Auto Museum**. More than a car museum, it includes music machines, organs and many renowned vehicles from our past. Coordinated by **Larry Last**, meet at Stahls 11:29 AM.

JULY:

NO MEETING IS SCHEDULED FOR JULY

Due to the summer shutdown, there is no July member meeting. All are encouraged to enjoy the month with family and friends as well as making more sawdust.



A Primer on Inlay

May 18th

Jeff Street will cover the basic description, process, tools, and materials used to create Inlay ornamentation in woodworking projects. String Inlays, highlighting, and geometric shapes will all be reviewed. Various tools, materials and examples will be on display for discussion and inquiry.





MWG MEMBERSHIP



As of January 2025 your Michigan Woodworkers' Guild yearly dues are now payable.

Feel free to right away complete the renewal process by paying your \$25 dues **Early** and **Often**.

A membership renewal form can be found on the website dropdown menu under "**Membership - Payment/Renewals**" or by selecting the link below.



President's Corner

By Jerry Romito



April 2025

Please renew your \$25 membership for 2025. The membership of our vibrant guild is always in flux at this time of the year, as we bring in new members, but at the same time current members fail to renew their membership. In the past 4 months 28 new members have joined, but 71 have not renewed, so our current membership of 133 is down from our recent high of 205.

A useful but maybe overlooked benefit of membership is our website's Woodworking Resource list of 182 entries compiled by guild members, principally by Tom Duke. The entries are categorized by searchable subjects, and include a brief description of each and a hot link to their website. Categories include wood, new and used tools, education, services, and many more. I recommend that our newer members who are not aware of the

list take a look. Simply log on the website and click on Resources. It is also easy for a member to add a resource to the list.

On a sad note, MWG member Jack Dalton passed away in April. Jack was a guild member for several years, after learning about us while working in the woodshop at the OPC senior center in Rochester Hills. He was a volunteer judge at the MITES student convention in Lansing in 2022. A link to his obituary is below. There are often so many things that we don't learn about an individual until their passing.

<https://www.modetzfuneralhomes.com/obituaries/John-Jack-Louis-Dalton-Jr?obId=41943620>

Jerry

ODETTE FERGUSON
SALES REPRESENTATIVE
E-mail: odette@sawspec.com

Saw & Specialty Corporation
Saw Service Centers
"EXCLUSIVELY SAWS SINCE 1919"
10555 Shook Rd. P.O. Box 74438
Romulus, Michigan 48174-0438
www.sawspec.com

Your single source for all
your sawing needs...from
coolants to machinery

Voice
800-SAW-SPEC
800-729-7732
734-941-2824
Cell
734-740-1691
Fax
734-941-2883

Member of
Industrial Distributors Association
International Saw & Knife Association

GLENN WING POWER TOOLS

33656 Woodward Ave.
Birmingham, MI 48009
(248) 644-0444
(248) 644-5790 Fax
(800) 821-5177 (US)
(800) 448-1572 (MI)

Jeff Wilmot



SALES AND AUTHORIZED FACTORY SERVICE

20579 Middlebelt
Livonia, MI 48152
(248) 476-7744

7187 Grand River Ave.
Brighton, MI 48114
(810) 220-1122

Fax: (248) 476-1090

Find the latest MWG Membership Form with the following link:

https://michiganwoodworkersguild.com/wp-content/uploads/membership/2025_MWG_Membership_Application_FORM_12-26-24.pdf



IN MEMORIAM

**Jule Ann Clough**

It is with deepest sorrow that we share the following:

MWG member **Jule Ann Clough** passed away peacefully on February 16, 2025, at 82 years old after a long battle with cancer. She was a member for 23 years, and was active on the board for many years as DVD Librarian.

Some of you may remember her constant broad smile and wide array of hats, most of which she knitted or decorated herself. Her family is arranging for a celebration of life in June.

Please join the Michigan Woodworkers' Guild to extend our deepest condolences to Jule Ann's family.

MEETING
REVIEW**By Dale Aushman**

MWG Meeting Review
Steve Stram on Vacuum Veneering
Livonia, MI – 13 April 2025

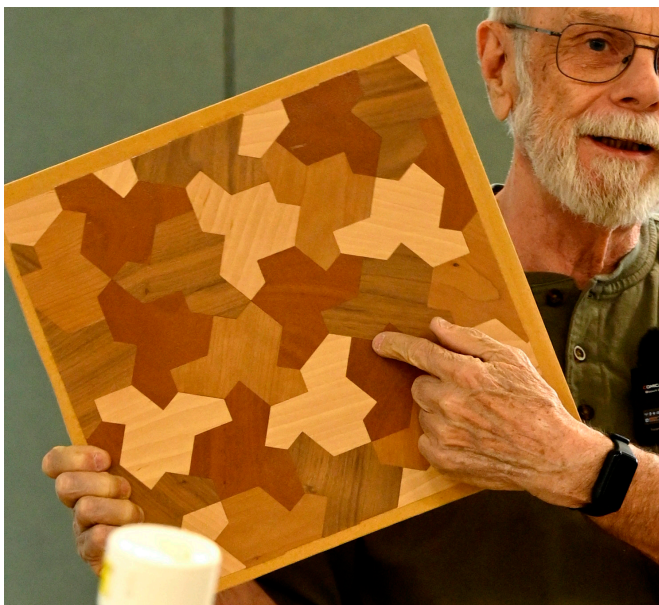
Our April 2025 meeting featured member **Steve Stram**, who presented an in-depth review of vacuum veneering tools and methods. Steve prepared a comprehensive PowerPoint presentation to guide us through the process and document key facts about vacuum veneering. A PDF version of the presentation will be available to members via the members-only section of our website, and a video recording will be posted on YouTube.

**Steve Stram with Veneer Board**



Steve began by discussing why one might use veneer instead of solid wood. Veneer allows woodworkers to achieve a desired look - such as a particular species or wood figure - in wider boards and at significantly lower cost. For example, mahogany veneer can cost around \$2.25 per square foot, compared to over \$5.95 per board foot for solid stock. Veneering also enables grain matching across panels using sequential sheets from a flitch, adjacent slices from the same log, allowing for book-matched designs on casework panels, face frames, and legs. Additionally, by applying veneer to a suitable substrate, woodworkers can achieve benefits in strength, stability, and reduced wood movement - advantages that are difficult to obtain with solid wood alone.

He reviewed the methods by which veneer is cut: rotary-sawn and crown-cut (sliced) for commercial veneer, and bandsaw-cut for shop-made veneer, which is typically thicker. A comparison chart showed veneer thicknesses ranging from 1/42" to 1/6", compared to standard paper thickness at 1/250". Most commercial veneer is about 1/50" thick. Steve noted that unbacked veneer, which tends to warp or wrinkle in storage, should be softened and flattened before use. He recommended products such as *Super-Soft 2™* from VeneerSupplies.com or *Pro-Glue Veneer Softener* from Woodcraft.



Stevens Veneer Projects

Veneers come in raw wood form - typically used for exotic and figured woods - or backed (with foil, wood, or phenolic), which are more durable and easier to handle. Raw veneers can be applied using cold press glue in a vacuum or clamping press. Backed veneers, usually available in larger sizes, are often applied with *Flex-Pro FSV* glue.



Steve Showing Vacuum System

Regardless of type, veneer must be uniformly and tightly pressed during the glue-up. Steve reviewed various clamping methods, including traditional hammer veneering with hot hide glue, book presses, sandbags, and cauls. (For hammer veneering the "hammer" is really just a strong squeegee repetitively drawn over the wet veneer to remove air spaces and bubbles as the hide glue cools and sets.)

The most consistent and scalable method is vacuum pressing. This involves placing the veneering assembly into a sealed bag and drawing a vacuum, which provides even pressure across the entire surface.



A typical vacuum pressing setup includes:

1. Platen – supports the assembly and allows air evacuation
2. Veneer – the decorative outer layer
3. Substrate – the core or base material
4. Backer veneer – used on the reverse side to balance the substrate and prevent warping
5. Vacuum pressure of 20" Hg can exert clamping forces around 1,400 psi, making it possible to use slightly warped veneer or curved forms without mechanical clamps. Steve also noted that hide glue can be advantageous when reversibility is desired, as it can be softened with heat and moisture later.



Typical Veneer Tools

Tools Steve Uses for Veneering:

- Veneer saw, roller knife, or blade (in a veneer slicer)
- Veneer tape (perforated or solid) – to hold pieces together or repair splits
- Glue roller or toothed spreader
- Seam roller – for pressing glued veneers
- Straightedge – for cutting guides

Vacuum Equipment and Materials:

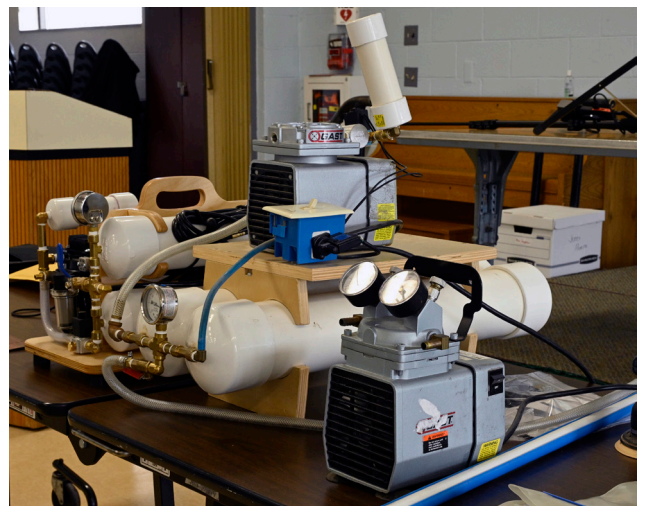
- **Vacuum bags** – Vinyl (less expensive) or polyurethane (more flexible, easier for insertion, greater durability)
 1. Polyurethane bags are 30 - 40% more expensive but more user-friendly
 2. Steve provided a Joe Woodworker Vacuum bag cost comparison chart:

<https://www.veneersupplies.com/docs/VeneerSupplies-VacuumBagChart.pdf>

- **Vacuum source** – pumps can be *continuous run* or *auto-cycling* via a pressure-activated switch
 1. Cold press glue only requires about 45 minutes of vacuum time
 2. Reservoirs are helpful for diaphragm pumps; less necessary for vane pumps
 3. Pressure switches help prolong pump life

Steve builds his own vacuum systems using surplus pumps from the University of Michigan Property Disposition site. He constructs vacuum reservoirs from large PVC pipe and adds plumbing, valves, and gauges as needed. Alternatively one can buy a kit which generally includes a pump. For example, Ken Wolf showed his *Joe Woodworker Project: EVS-2™ Auto-Cycling Pump Vacuum Press Kit*, which includes a 3.5 CFM pump (upgradeable to 5.0 CFM) and costs around \$600. This well-regarded kit includes a detailed manual with high-quality images.

<https://www.veneersupplies.com/products/Project-EVS-2-Auto-Cycling-Pump-Vacuum-Press-Kit.html>



Steve's Home-Made Vacuum



Steve also shared a comparison chart of other less expensive vacuum control system kits from *Joe Woodworker*, including both electric pump and Venturi systems (the latter powered by air compressors), with options starting at around \$280. For a super-budget-friendly entry point, he pointed out the \$120 *Rockler ROAR Thin Air Press Vacuum Bag Kit*, a hand-pumped system that includes a 26" x 28" bag.



Vacuum Bags

Steve's charts included a wealth of other information:

- A glue comparison table showing pros, cons, and recommended applications
- A step-by-step walkthrough of the vacuum veneering process - from substrate prep to tape removal and sanding
- "My experience" tips based on years of hands-on work and mistakes he has made
- A list of his favorite suppliers for glue, veneer softener, and veneers
- He also recommended <https://www.joewoodworker.com/> for its wealth of how-to articles, FAQs, and responsive email support.

Looking ahead, Steve plans to build a shop-made 3' x 4' frame press to simplify assembling the veneer sandwich and inserting it into the bag - his alternative to the commercial 4' x 8' *VacuPress frame system*, which retails for \$5,500.

My Sources

- I buy my glue, softener and most real wood veneer online from Joe Woodworker (Forest Hill, Maryland); <http://www.veneersupplies.com/> or Certainly Wood; East Aurora, NY <https://certainlywood.com/>
- For 8" by 32" sheets of common species veneer, Toledo Plywood is almost half the price of Woodcraft or Rockler; <http://www.toledoplywood.com/>
- Paper back veneer is available locally from; J Kaltz (Ferndale) <https://www.jkaltzco.com/> or Oakwood Veneer (Troy) <http://www.oakwoodveneer.com/index.html>
- Joe Woodworker has a large amount of information on his site and FAQ for most every aspect. He responds well to email questions.
- CertainlyWood has a "bargain" price if you buy the remaining sheets of a flitch.

Michigan Woodworkers' Guild

4/13/2025

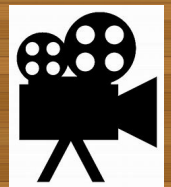
23

Steves Veneer Sources

We thank Steve for his excellent presentation and for generously sharing his deep experience. Thanks also to **Larry Last** for coordinating the meeting, **Kevin Goulet** and **Dave McCagg** for video production, and Dan Holowicki for event photography. Special thanks to Kevin for setting up and posting the YouTube recording on our website.



MWG
MEETING ON
YouTube



Go to youtube.com

And subscribe to the channel

Michigan Woodworkers Guild – meeting video



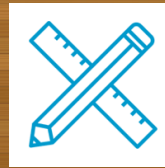


DUSTY HUMOR

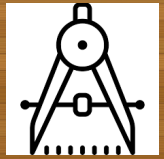


- The Hurrier I go the Behinder I get.
- A bad day woodturning is still better than a good day working.
- When it comes to buying tools I use the one my father taught me. "It's easier to get forgiveness than it is to get permission" my wife hates it, but it works every time..... well almost.

These phrases are provided purely for your humorous enjoyment. Feel free to send your favorite woodworking pun to the MWG Newsletter Editor for possible future publication.



MWG DESIGN CENTER

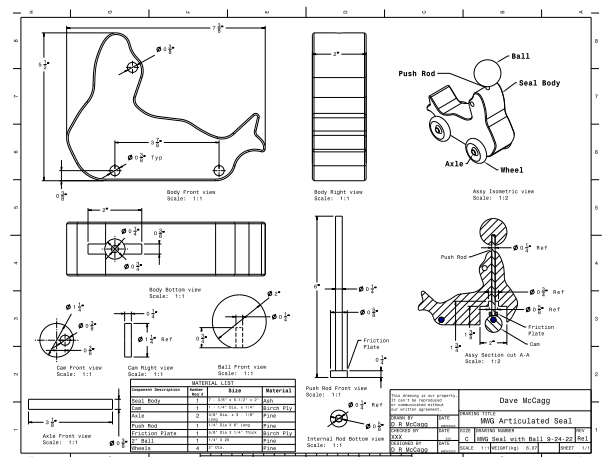


From the Editor

In support of the MWG Children's Hospital Toy Program, the MWG Design Staff has once again been busy at work.

You will find plans to build the **Seal Pull Toy** that Dan mentioned in his article this month at the link shown below. Please note that the second page of the plans can be printed full sized to help one with the seal body tracing.

Feel free to build a whole flock of pull toy seals to help support kids at Children's Hospital.

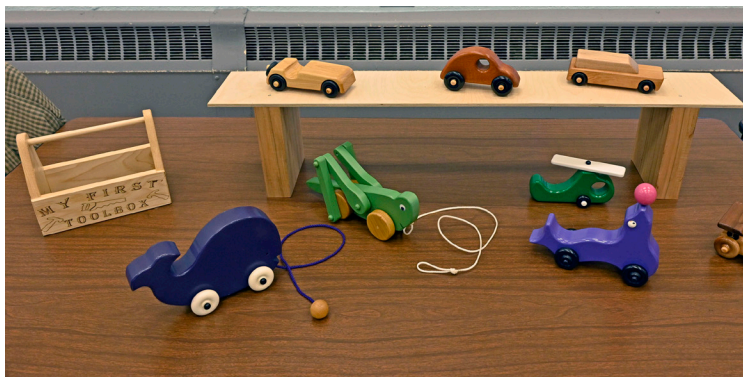


You can find detailed plans for the Seal Pull Toy on the MWG website with the following link:
https://michiganwoodworkersguild.com/wp-content/uploads/toys/MWG_Seal_With_Ball_Drawing_11-10-22.pdf

**CHILDREN'S
HOSPITAL
MWG PROGRAM
UPDATE****From Ron and Dan****News from the Toy and Box Committee****Resources for Toys and Boxes**

Last month I listed a few sites where one can get custom parts and plans for toys. This article will be more of a comprehensive list of resources.

First and foremost, the Guild will provide standard and treaded wheels in 1", 1 1/4" or 1 1/2" dia., 1/2" OD nylon washers and 1/4" dia. wheel pegs free of charge to any member who wishes to make toys for this program. The Guild still has an inventory of non-standard wheels and other toy parts that have been recently categorized. While there has been a good response to these non-standard items remember that once they are gone, they will not be replaced. We try to bring a few of these non standard items to our regular meetings. Contact info for Ron and Dan is listed at the end of this article.

**MWG Mar2025 Toys**

Toy parts are available through a number of suppliers. I personally have ordered through Casey's Wood Products (www.caseyswood.com), with good

success, reasonable prices and quality items. Several other internet sites are American Woodcrafters Supply (www.americanwoodcrafterssupply.com), Bear Woods Supply Company (www.bearwood.com), CraftParts (www.craftparts.com) and Woodpeckers Crafts (www.woodpeckerscrafts.com). Maple Landmark (www.maplelandmark.com) is a unique site selling completed and/or unfinished toys, games, puzzles and novelties. Just perusing the site could be an inspiration for toymakers. Of course one can also search Amazon (amazon.com) for wood toy parts for many many more supplies.

**Dave Nordstrum's Model T**

For those looking for toy plans there are a number of sites that offer free plans and for purchase plans. Our very own website has a number of toy designs and plans available. Our design staff is adding new designs and plans as time allows.

A Cut Above Woodworking

(<https://acutabovewoodworkings.com>) offers a number of free toy plans but also has sections on safety, adhesives, finishing, tools and shop solutions. In fact, some of the free toy plans I may very well use in the future. This site is well worth a look.

Cherry Tree Toys (<https://cherrytreetoys.com>) no longer carries toy parts but does have an extensive



collection of toy plans for sale. Cherry Tree also carries a line of carving tools for sale.

Free Woodworking Plans

(<https://freewoodworkingplans.com>) has a number of pull toys, planes, trains and vehicle plans and links available. Many other woodworking projects other than toys, games and puzzles are also listed.

Toy Making Plans (<https://toymakingplans.com>) has quite a variety of toy plans for sale. Many of the toys are intricate and more of the heirloom variety. At first look the plans may seem expensive but a single plan purchase may encompass several similar but different individual toys.

All Crafts (<https://allcrafts.net>) features over 100 different toy plans for free. These plans are downloadable in .pdf format and come with detailed instructions and assembly tips.

Toys and Joys (www.toysandjoys.com) features many heirloom quality toys and patterns for purchase. The site also sells a number of toy parts specific to their designs.



Berg's Helicopters and Planes

Craftsman Space (www.craftsmanspace.com) has a number of free kid toy plans available as .pdf downloads.

And once again going to Amazon and searching for wood toy plan books resulted in almost 200 listings.

Once again, a few words about the approved finishes for use in our Children's Hospital Toy Program. Among other things, Children's Hospital requires us to make sure that the finishes we use on toys have a CPSIA certification. The Consumer Product Safety Information Act (CPSIA) requires that all finishes for children's items, and some furniture for adults and children, must not contain a concentration of lead greater than 0.009 percent (90 parts per million) in paint or any similar surface coatings. As can be found on our website these finishes include Zinsser shellacs, Minwax polyurethanes, Watco spray lacquers, General Finish's products and Rust-O-Leum 2x spray paints. Shellac is a very safe finish to use. It is routinely used as a coating in many medicinal pills, food items and as part of the hard coating on one of my favorite candies, M&M's. Again, when making toys and boxes for the Hospital program, please make sure that you use an approved finish.

To all that support this program, a heartfelt Thank-You. This will be my twelfth year making toys and boxes for this program. I always look forward to finishing up a batch of toys and looking for inspiration for the next design. I hope that in some way our toy/box program, under the past direction of Ken Wolf and currently Ron Ross and myself, have inspired individuals to try their hand in making toys/boxes for children.

For further information on our toy/box program, request wheels and axles or to arrange to drop off toys or boxes, please contact

Ron - 734- 812-5531 - rross1508@gmail.com

Dan - 313-702-5836 - dan56laura@att.net



For membership information contact

Dave McCagg at: d2mccagg@provide.net

For name tags, sign up with Ed Stuckey at a regular meeting.

Executive Board Members / Committee Chairs

Jerry Romito.....	President.....	248-475-5976
Frank Kalinsky..	Vice President....	734-516-3405
Dan Holowicki...	Secretary.....	734-283-9898
Ed Stuckey.....	Treasurer.....	313-345-3671
Dan Holowicki.....	Officer at Large.....	734-283-9898
Tony Gigliotti	Officer at Large	248-853-8349
Bill Gayde	Officer at Large	248-859-3949
Ron Ross.....	Officer at Large.....	734-812-5531
Rich Herbert.....	Officer at Large.....	248-628-0644
Ragnar Bergethon...	Officer at Large.....	248-608-8436
Ken Wolf.....	Officer at Large.....	734-981-3423
Dave McCagg.....	Officer at Large.....	734-482-6764
Ragnar Bergethon..	Website	248-608-8436
Dave McCagg.....	Newsletter Editor.....	734-482-6764
Dave McCagg.....	Membership.....	734-482-6764
Larry Last..	Programs/Website Calendar....	248-207-9386
Bob Mills.....	Mentoring.....	248-535-6718
Kevin Goulet	Camera Chair	248-672-5341
Fred Ball....	Web Site Calendar (Backup).....	248-681-3108
Ron Ross.....	Toy Program.....	734-812-5531
Kevin Goulet.....	Officer at Large.....	248-672-5341
Ron Ross.....	Food Coordinator.....	734-812-5531

6 MILE RD.

George's Senate Coney
Island Restaurant
39450 Dun Rovin Dr.
Northville, Mi. 48168

5 MILE RD.

HAGGERTY

I-275

MAP TO GEORGE SENATE RESTAURANT
HAGGERTY BETWEEN 5 & 6 MILE

Next MWG Luncheon: (Coordinated by TBD)
Thursday, 22 MAY 2025 at 10:16 AM