



MICHIGAN WOODWORKER

michiganwoodworkersguild.com



Michigan Woodworkers' Guild (est. 1981) November 2021 Vol. 42 No. 11

When / Where:

SUNDAY, NOVEMBER 14, 2021

(Virtual Meeting Starts: 2:00 PM)

Real Time Virtual Meeting:

Colin Knecht's

"Favorite Woodworking Tools"

Remote Zoom w/Email Invite to Members

Coordinated by: Larry Last / Jerry Romito

ZOOM MEETING START TIME: 2:00 PM



VIRTUAL MEETING
CONNECTION DETAILS TO
BE SENT BY JERRY ROMITO

NOVEMBER:

At our 2:00 PM **November 14th** Virtual meeting, **Colin Knecht** will review Selecting 5 Favorite Tools for your shop - Expensive vs. Budget. MWG members will showcase their favorite tools

DECEMBER:

Enjoy the Christmas season making extra sawdust for there is no meeting scheduled for December and no MWG luncheon scheduled for December

JANUARY:

MWG Member, **Dave McCagg**, will demonstrate how we can use **CAD** to design, develop and enhance our woodworking projects at our 2:00 PM **January 9th** meeting. Come join us for our first in-person meeting for 2022.



**Selecting 5 Favorite Tools
Expensive vs. Budget**

November 14th

Choices are endless, especially when deciding to buy woodworking tools. Whether your favorite tool comes from Harbor Freight, Rockler, Woodcraft, Cherry, or Woodpeckers, join **Colin Knecht's** discussion of "Five Favorite tools for your shop – Expensive vs. budget" at our **Sunday November 14th 2:00 PM** virtual meeting coordinated by **Larry Last** and **Jerry Romito**. All members are welcome to showcase their favorite or dud tool.





President's Corner

By Jerry Romito



November, 2021

Our October Zoom meeting on dust collection with Bill Pentz was a doozy. See Dale Ausherman's review in this newsletter. Boy did we get food for thought!

As I mentioned last month, Tim Kolassa has volunteered to be our new librarian, and his first task is certainly much bigger than he expected. Currently, he and Bob Mills are sorting and cataloging the collection of 750 woodworking books and DVD's donated by Becky Holden, the wife of deceased member Mike Holden. Our goal is to determine the best way to distribute this collection to guild members or others. Since half of these books are valuable reference books on the subject of period furniture, many in mint-condition, we are also communicating with the SAPFM to see if they may be interested in them. Once we have cataloged all the books, we will work out a plan for making them available to members.

Please see my article elsewhere in this newsletter about the massive Lie-Nielsen plane sale we just completed.


As I have mentioned for several months, one of the new features of our website is the members' Forum, where you can post questions or comments to Guild members, and members can respond. There has been no activity on the Forum yet, so I'm just waiting and hoping that it will eventually draw some attention. Try it out with a question, and see if you get a response.

As we start back with our live meetings next year, we need volunteers to fill other numerous open standing committee positions, which are listed on the website under Executive Board. I'll email info on that later, but you can always contact me now if you have an


interest. Also, this is the last newsletter call for officer nominations 2022. If you want to volunteer for a job or have any nominations, please let me know at GJRomito@aol.com.

You can check this newsletter and the website for info on our November final Zoom meeting for 2021.

Jerry Romito
MWG President



**CHILDREN'S
HOSPITAL
MWG TOY PROGRAM
DROP-OFF DETAILS**



From Ron, Ken, and Dan

2021 MWG Toy/Box Drop Off Schedule

Saturday 4DEC2021 from 1 PM to 2 PM, you will be able to drop off your completed toys and boxes for Children's Hospital at the Senior Centers in Livonia or Royal Oak.

Dan will be in the parking lot of the:
Livonia Senior Center
15218 Farmington Rd.
Livonia, Mi.
Date: Saturday, 4DEC2021
Time: 1:00 – 2:00 PM

Ron will be in the parking lot of the:
Royal Oak Senior Center
3500 Marais Ave,
Royal Oak, Mi.
Date: Saturday, 4DEC2021
Time: 1:00 – 2:00 PM

Please provide a description and quantity of what is included in your packages. If you are unable to drop off your creations during this scheduled time, please contact:

Dan (313-702-5836) or
Ron (734-812-5531)

to schedule a drop off with them.



MEETING REVIEW



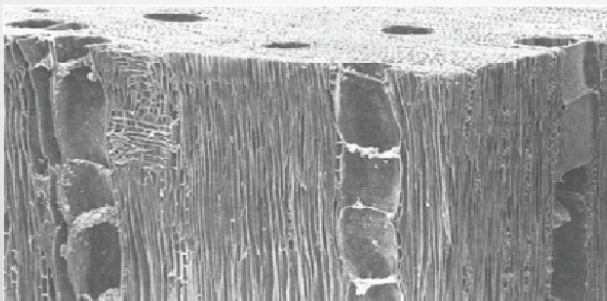
By Dale Aushman

MWG Meeting Review

Bill Pentz – Dust Collection
10OCT2021

Due to the continuing Coronavirus restrictions on large meetings, the Guild continues online virtual programs to educate and entertain members in the craft of woodworking. Our October Zoom was presented by Bill Pentz, a California-based woodworker, contractor, manager, inventor and university biomedical computer engineering instructor who has done extensive research and design on wood dust collection systems since 1994, over 27 years. His goal was to educate us on the dangers of woodworking dust, explain the differences between “chip collection” and “fine dust collection” and what each requires for mitigation, and to share his views on implementing dust collection solutions to protect ourselves, family and pets. Over the years Bill has provided consulting to dust-collection manufacturers and has made note-

2.0 Research



Electron Microscope Slide of Wood

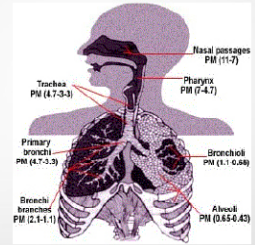
Bill Pentz

10/25/2021 1

Bill Pence Dust Collection

2.4.4 Airborne Dust Disposition

- Larger particles sized over 10-microns eventually naturally cleared by our bodies
- Inhalable dust (airborne dust) particles lodge in airways
- Respirable dust (fine dust) particles lodge in air passages
- Alveoli dust lodge in our bronchi ends and alveoli air sacs
- 0.5 to 1-micron go into our blood
- < 0.5-micron blow right back out



Disposition of Particulate Matter (PM) in the Respiratory system (Richard Wilson, Harvard Press, 1996)

10/25/2021 1

Bill Pence Dust Collection 113

worthy contributions to product designs. The entire Zoom meeting video is available for replay on the Guild website:

<https://drive.google.com/file/d/1A7eDQbYXBbwqwkA-iUPHFqI7-8yO0Rf3/view?usp=sharing>

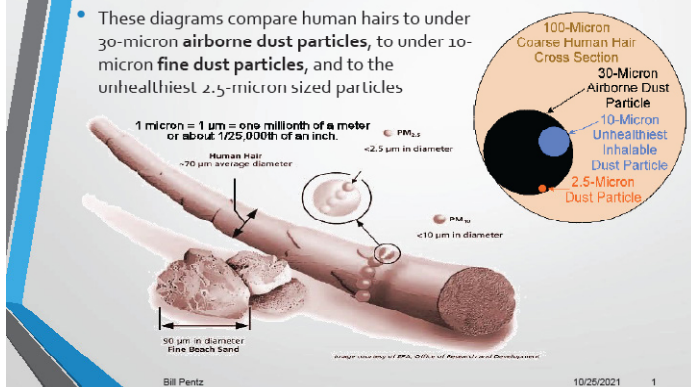
Bill's experience in dust collection began in the mid sixty's with efforts to clean up the dust environment in his parents commercial cabinet shop. He assembled a dust control solution based on the best commercial products at the time. He thought the shop was then well protected, but soon had severe allergic wood dust reactions requiring hospitalization, along with subsequent attacks even after medication treatment. Not wanting to abandon woodworking, Bill undertook extensive research and testing to determine what was going on in the shop. He learned that using the best equipment available he only had good “Chip Collection,” collecting the same sawdust and chips we would collect with a broom, which only leaves a “clean looking” shop. What he did NOT have was good “Fine Dust Collection,” providing both good “chip collection” AND collecting the unhealthiest airborne fine dust.

Bill undertook additional extensive research into the specific human health dangers of dust, characterization of dust types, government standards for safe dust levels, requirements for equipment design and installation to meet the safety standards, shortfalls in advertised specifications for common commercial



2.4.2 Airborne Dust Sizing

- These diagrams compare human hairs to under 30-micron airborne dust particles, to under 10-micron fine dust particles, and to the unhealthiest 2.5-micron sized particles



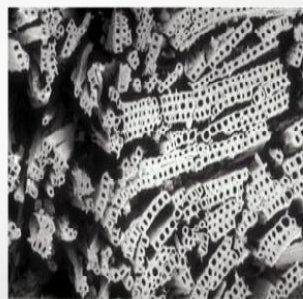
Bill Pence Dust Collection 400

equipment, and various implementation strategies. Bill came up with his own small shop solutions to provide good fine dust collection, including upgrading of all tool hoods, designing a more efficient cyclone with fine dust separation, designing a more efficient blower with much higher airflow, implementing properly sized stacked cartridge filter system, and putting in properly sized ducting.

Many details of Bill's extensive research and design, and the resulting solution key parameters, are given in his PowerPoint briefing used for the Zoom meeting and available on the Guild website:

2.4.5 Airborne Dust Behavior

- Airborne dust lasts centuries unless it gets wet
- Airborne dust is easily carried in shared air and on our clothes, skin and hair to contaminate all connected areas and areas we visit after exposure
- Long haired pets are like dust mops and can spread huge amounts of airborne dust
- Airborne dust particles over 10-microns visibly coat our tools and work surfaces plus ruin fresh finishes



Fine dust from a sealed pyramid

Bill Pentz

10/25/2021 1

Bill Pence Dust Collection 437

<https://docs.google.com/presentation/d/1BEydbMjQINuAIQTbqpp9h4dvTu0ygvY9/edit?usp=sharing&ouid=111928101414667159971&rtfpof=true&sd=true>

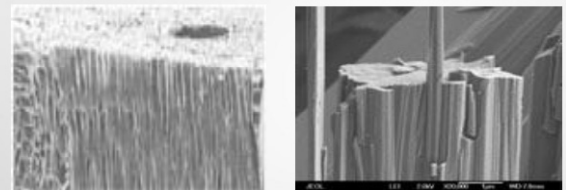
Editor's Note: (Copy and Paste the above URL in your favorite search engine)

The more voluminous total in-depth reporting of his research and evolved solutions are given in Bill's Cyclone and Dust Collection Research information clearing house:

<http://billpentz.com/woodworking/cyclone/>

Bill's Cyclone and Dust Collection Research site has extensive sections on basic design, equipment, duct-

2.5.6 More Fine Dust Hazards



- Under an electron microscope wood dust (left) looks similar to asbestos and fiberglass fibers (right) that cause asbestosis and silicosis
- Medical research shows fine wood dust particles cause very similar long term damage. This makes sense as wood also gets much of its strength from silica (glass)

Bill Pentz

10/25/2021 1

Bill Pence Dust Collection 366

ing and testing. The ducting section includes detailed information on making dust hoods for various tool stations.

The key driving Bill's recommended solution is the existence of the pervasive but invisible fine dust, of diameter 10 microns or less, which presents the major health factor, akin to the danger of asbestos. Bill's system for dust collection requires adequate dust "hoods" at each tool station, substantive ducting to support adequate airflow volume and velocity, high performance cyclonic separation of chips from fine dust, and superior cyclone exhaust fine-dust filtering in the event one cannot vent the exhaust outside the shop or home. In Bill's well-grounded opinion implementation requirements for chip and fine dust collection are not achievable using the usual commercially



available equipment (110V, 1-2 HP, four-inch ducting). He also asserts that most readily available shop air cleaners (the boxes typically hung from the ceiling) have inappropriate air volumes and filter fineness/sizing.

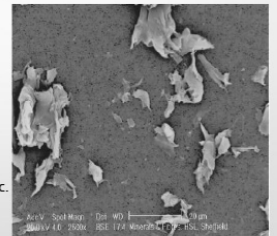
The requirements to implement Bill's recommended solution for adequate fine dust collection are very daunting. The system requires 6-7 inch ducting to support adequate air flow volume and velocity. Required air velocity is 3000 FPM in horizontal ducting runs, and 4000 FPM in vertical runs. Plus one needs need at least 1000 CFM airflow volume at all small shop stationary tools. The recommended separation cyclone meeting these needs for 6-7 inch ducting requires a 5 HP motor (i.e. 220 volt with significant noise), and stands 8 ft. high. Because of the noise the cyclone and motor should be in a separate sound-insulated enclosure, or in an attached "room" located outside the home or shop. The cyclone outflow should be vented outside if permitted by local codes. If venting is not possible, then stacked large canister filters totaling at least 250 square feet are required, and 500 square feet for better filter life. These are all very substantive requirements. Imple-

port Bill's contention that "if you are going to spend \$2000+ then take the time and trouble to learn what you are doing and do it right." His extensive site provides the information required.

2.5.5 Fine Dust Hazards

Jagged microscopic airborne fine dust particles get by our natural protections then lodge stuck deep in our tissues where our bodies have a hard time getting rid of them. There these particles stab, cut, scar and leave toxic chemicals which damage our respiratory tissues

- Cause respiratory irritation and clogging
- Increases **chemical toxin** and **disease** risks
- Extend and worsen infections
- Slowly reduce lung capacity from scarring
- Serious health problems in later life
 - Chronic Obstructive Pulmonary Disease (COPD)
 - Fibrosis, emphysema, reduced lung capacity etc.
 - 1% to 3.2% increased mortality rate and shortened life spans



Bill Pentz

10/25/2021 1

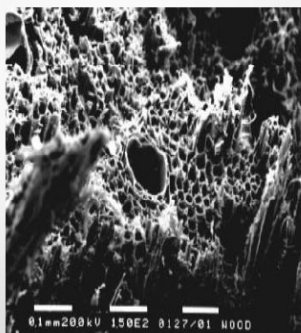
Bill Pence Dust Collection 410

In considering implementation others may face circumstances such as my own where my shop is tightly packed into a couple of separated basement rooms (which share use with other family functions and appliances), has limited overhead height, and has no practical external routing of exhaust. So in my case, the facility requirements are very onerous. Cost issues are also significant, as I would have to abandon much existing but apparently inadequate dust control equipment and buy all new. In cases where totally ideal implementation is just not practical, Bill makes recommendations for at least reducing the risk of dust health damage:

- Always wear a properly fitted NIOSH approved respirator mask when making fine dust or working on toxic woods.
- Use a powerful fan to blow as much air as possible out of your shop (good for garage shops and not practical in Michigan winter weather in any case).
- Vent individual dust collectors and cyclones outside if at all possible, providing makeup air to keep from pulling deadly carbon monoxide backward through your flues and vents.

7.17 Fine Dust Collection Benefits

- Significantly reduces our airborne dust exposure
- Deals effectively with second hand dust for those close to us
- Larger airflows provide far better "chip collection" leaving a much cleaner shop



Bill Pentz

10/25/2021 1

Bill Pence Dust Collection 198

mentation would cost several thousand dollars and have significant facility requirements for space and configuration. But based on Bill's high expertise and years of research and testing, such an implantation is likely required to ideally protect myself, family, and pets from the dangers of fine shop dust. And I sup-



- Keep the mask and fan on for at least ½ hour after you stop your woodworking, and
- Thoroughly clean your shop regularly to minimize residual dust buildup

Bill also indicates that there are some power tools with built-in "hoods" and small dust ports (e.g. chop saws and some routers) which can be adequately served with an attached high-performance HEPA shop vacuum such as offered by Fein and Festool.

For those of us who may have to rely on use of a NIOSH approved mask Bill provides recommendations:

- The paper type medical masks do not seal well enough.
- Most [woodworkers] like the 3M model 7500 series respirator masks, fitted properly for your face, and using both a cartridge and pre-filter. [Amazon: 3M 7503 Large Silicone Ultimate Half Mask 7500 Series Reusable Respirator, \$35, with available 3M P100 60926 cartridge for dust and organic vapors (\$24/pr), or 3M P100 particulate-only filter (\$10/pr), or 6001 dust and organic cartridges with electrostatic cotton pre-filter (\$11/pr). The model 7501 is size small, 7502 is medium, and 7503 is large. Note: The P100 rating is the highest for personal respiratory protection, blocking 99.9% of particles 0.3 microns or larger.
- Turners, those with beards, and those with respiratory problems, like the Trend Air Shield powered air purifying respirator (PAPR) with face shields. [Amazon about \$320, and optional Trend Ear defenders \$47]
- Ensure whatever mask you buy has readily available cartridges and filters.
- Stay in your masks until you thoroughly clean all exposed areas.

While many of us may not have the facilities nor means for a totally correct installation, Bill's material provides the information for us to get as close as we can to an ideal solution. As a follow-on to our October program, Bill has offered a program to take about 45 minutes and go through how to fix the hoods on

just about every major small shop tool, upgrade the ducting, down drops and blast gates, and how to go about picking and putting in place an ample dust collector, cyclone and air cleaner for good fine dust collection and control. He would also spend a few minutes on cleaning up contaminated shops and homes. The Guild Board is considering this offer.

We thank Bill for his very informative presentation and for sharing his in-depth research and implementation information. And we give Jerry and the Board our appreciation for arranging this important topic.

- Dale Ausherman

GLENN WING

POWER TOOLS

33656 Woodward Ave.
Birmingham, MI 48009
(248) 644-0444
(248) 644-5790 Fax
(800) 821-5177 (US)
(800) 448-1572 (MI)

Jeff Wilmot

ODETTE FERGUSON
SALES REPRESENTATIVE
E-mail: odette@sawspec.com



Saw & Specialty Corporation

"EXCLUSIVELY SAWS SINCE 1919"

Saw Service Centers

10555 Shook Rd. P.O. Box 74438
Romulus, Michigan 48174-0438

Your single source for all
your sawing needs...from
coolants to machinery

Voice
800-SAW-SPEC
800-729-7732
734-941-2824
Cell
734-740-1691
Fax
734-941-2883

Member of
Industrial Distributors Association
International Saw & Knife Association



Michigan Naturals

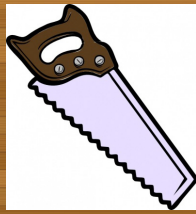
DECORATIVE CABINET HARDWARE

www.MichiganNaturals.net

Ann Ivory
313-506-1963



WOODWORK NOTES



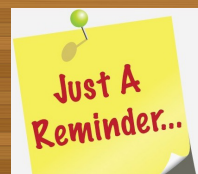
The Lie-Nielsen Fantastic Plane Sale:

If you were following your many emails this past month, you are aware that we were able to take advantage of what could be considered a once-in-a-lifetime tool sale. Via a contact through our website, the estate of a collector offered us 45 mint-condition Lie-Nielsen planes for about 50 percent or less of the current market price. Some of the planes were discontinued (many of them available only on-line at high prices), while others are still in production, but out-of-stock at Lie Nielsen. All were pristine in their original wrapping paper and boxes.

The estate was eager to sell and allowed me to set the pricing. When all was said and done, 14 members purchased 43 planes, for a total price of \$4,466. I sold the final two planes, which were rare, limited edition #1 and #2 bench planes, to Jim Bode Tools for \$2,000 for the pair. You can go to Bode's website <https://www.jimbodetools.com/> to see his offerings. He has sold these same two planes in the past for about \$1,500 each.

For me it was gratifying to see the expressions on members' faces as they unwrapped their planes and took in the beauty of the fine materials and manufacturing of these quality tools. For some, like me, it was the first time we ever held or owned a Lie-Nielsen plane. The seller was also happy to see them go to good homes. Tool sales such as these are yet another advantage of membership in the MWG. Stay tuned for upcoming sales.

Jerry Romito



MWG MEMBERSHIP



Just as a reminder, Michigan Woodworker's Guild yearly dues will become payable January 2022.

Feel free to get ahead of the renewal process by paying your \$25 dues **Early** and **Often**.

A membership renewal form can be found on the website dropdown menu under "Membership - Payment/Renewals"

ODETTE FERGUSON
SALES REPRESENTATIVE
E-mail: odette@sawspec.com



10555 Shook Rd. P.O. Box 74438
Romulus, Michigan 48174-0438

Your single source for all
your sawing needs...from
coolants to machinery

Voice
800-SAW-SPEC
800-729-7732
734-941-2824
Cell
734-740-1691
Fax
734-941-2883

Member of
Industrial Distributors Association

**CHILDREN'S
HOSPITAL
MWG PROGRAM
UPDATE****From Ron, Ken, and Dan****Attention All Toymakers!**

The delivery of toys to the Children's Hospital Snowpile Program is fast approaching. We are anticipating delivering the Guild's toys sometime around **December 10**. At this time we will be accepting finished toys until the first weekend of December. I suspect that those who have committed to building toys this year are well underway and may have already completed them. As this newsletter comes out, there are only about 30 days left until we need to compile all the toys and deliver them.

Toys can be dropped off with Ron who lives in the Plymouth area or Dan who lives in Southgate; you may choose which one is more convenient for you. At this time, either Ron and/or Dan will be attending the October and November Guild luncheon, so toys may also be dropped off then. Should we decide to do a drop off the first weekend of December, Jerry Romito will send out an e-mail blast to let members know time and location.

**Berg's Trucks / Race Cars**

As has always been the policy, the Guild will provide wheels (1", 1 1/4" or 1 1/2" dia), nylon washers and

wheel pegs free of charge to any member who wishes to make toys for this program. We have plenty on hand and if you need these items, they can be obtained by contacting Ron or Dan.

A special Thank-You goes out to member **Loel Gnadt**, who donated a large supply of turned wheels, tires, funnels, discs and other shapes to the Guild. In addition there are also many poplar shorts suitable for toy projects. All these items will be categorized and made available to Guild members as time permits.

The Guild has set a goal of delivering 400 toys to Children's Hospital for the Christmas Snowpile program. This program is only a part of our toy distribution throughout the year, with the larger, more complex toys given out at that time. Throughout the year a fair amount of simpler toys are distributed to all the clinics within the Children's Hospital Complex. These toys are used by the children in the waiting rooms as they wait to see a specialist or treatment. Some toys are passed out to siblings of child patients when they come to visit. Other toys stay with the children when they are released from the hospital. As of this past April, all the 350+ toys we delivered in December of 2020 had been spoken for.

If you have made toys in the past and plan on doing so this year we thank you. If you have thought it might be an easy project to put together, yes it can. On our updated website, we have documents that give plenty of tips, techniques and guidelines for building the toys. Don't know what type of toys to make? Pictures and patterns are available on our Guild's website for everything from sailboats, trucks, to pull-toy animals and some pretty neat race cars. And you are free to come up with your own designs. The hospital staff also requests that any toys donated have smooth rounded edges and a smooth finish whether painted or varnished. This helps to maintain the ease of cleanliness that is paramount throughout the hospital complex.

The hospital also has a need for boxes, both plain ones, which the children can use for activities during their hospital stay and somewhat fancier boxes, usu-



ally made with hardwoods and more intricate joinery. These fancier boxes are presented to family members of children who did not survive their afflictions. The hospital does like boxes that are about the size of a shoebox. Also the picture frames on top of the memory boxes are well liked by the hospital staff but not necessary. Last year we did exceed our quota for boxes, encouraging news that our Guild members still strongly support this program. With that being said, any amount that we can deliver is greatly appreciated. We all realize that last year has been especially difficult for all involved. We also know that at least a good portion of this year has not been without its challenges. For those families with children being treated at the hospital imagine how much more difficult the pandemic situation has been for them. This is the one program MWG does annually to benefit those children who really, really need to smile and forget about their reasons for being in the hospital.

Thank you for your support.

Ron Ross & Dan Holowicki

For further information on our toy program, request wheels and axles or to arrange to drop off toys, please contact

Ron - 734- 812-5531 - rross1508@gmail.com

Dan - 313-702-5836 - dan56laura@att.net



MARSH POWER TOOLS
SALES AND AUTHORIZED FACTORY SERVICE

20579 Middlebelt Livonia, MI 48152 (248) 476-7744	7187 Grand River Ave. Brighton, MI 48114 (810) 220-1122
--	--

Fax: (248) 476-1090



CUSTOM WOODWORK & MILLING
 Live Edge Slabs & Urban Lumber
 Barn Wood & Salvaged Wood
 Firewood

JASON COWAN
 Office (734) 751-6746
 Cell (734) 658-2840
TREETURPOSED.COM



MEMBER NOTES



The Mike Holden Fantastic Tool Sale

In October I announced the **Mike Holden** tool sale, including a 12-page list Becky Holden had compiled of her late husband's tools. It was a life-long collection of over 500 hand tools that I know many of us were looking forward to getting a chance to acquire.

The sale offered a discounted price if the entire lot was purchased. I am happy to report for Becky that the entire lot-offer was taken by **Jeff Wilmot**, long-time MWG member and owner of **Glenn Wing Power Tools**. I stopped in to see Jeff after his purchase. He informed me that he intends to gradually bring all of the tools into his shop for sale. So there will still be an opportunity for all of us to get some of the tools at good used-tool prices.

Glenn Wing Power Tools has been a long-time advertiser in our newsletter, so I encourage you to periodically check them out and patronize them at: **33656 Woodward Avenue, Birmingham, MI.**

Jerry Romito

LIVE JUNE 13
WITH

**CONSTRUCTING A
WALNUT & MAPLE
WRITING DESK**

Special Shop Session
with **TOM
MCLAUGHLIN**


MICHIGAN WOODWORKERS' GUILD



EPIC
WOODWORKING



NEW! ROCKLER CASTING MOLDS

Make your own Coasters and Turning Blanks

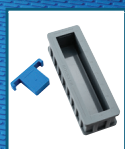
Square Coaster
Mold: 67390



Round Coaster
Mold: 69734



Handle Blank
Mold: 69157



Pen Blank
Mold: 69213



ROCKLER

CREATE WITH CONFIDENCE

MAS

TIME SAVING EPOXY RESINS



Choose from Deep Pour, Table Top or Penetrating MAS Epoxy.

SEE ALL ONLINE AT: ROCKLER.COM



NEW! CASTING SUPPLIES FROM ALUMILITE AND LIZARD BLANKS!



Alumilite Skus: 69188, 64406, 62474, 65911, 65459, 64696, 65800, 66616, 68678, and 69014

62066



Lizard Blank Skus: 62066 (Handle), 65626 (Pen), and 65112 (Bottle Stopper)

GIFT MAKING SALE PRICING ENDS 11/18/2021

26160 Ingersol Drive • Novi, MI 48375 • (248) 543-5110 • Rockler.com

Please check Rockler.com for current store hours.

For membership information contact

Dave McCagg at: d2mccagg@provide.net

For name tags, sign up with Ed Stuckey at a regular meeting.

6 MILE RD.

George's Senate Coney
Island Restaurant
39450 Dun Rovin Dr.
Northville, Mi. 48168

5 MILE RD.

HAGGERTY

I-275

MAP TO GEORGE SENATE RESTAURANT
HAGGERTY BETWEEN 5 & 6 MILE

Executive Board Members

Jerry Romito.....	President.....	248-475-5976
Will Wilson.....	Vice President.....	248-207-8883
Ed Stuckey.....	Treasurer.....	313-345-3671
Don Hess.....	Secretary.....	734-207-8427
Dan Holowicki.....	Officer at Large.....	734-283-9898
Tony Gigliotti	Officer at Large	248-853-8349
Bill Gayde	Officer at Large	248-859-3949
Ron Ross.....	Officer at Large.....	734-812-5531
Rich Herbert.....	Officer at Large.....	248-628-0644
Ragnar Bergethon...	Officer at Large.....	248-608-8436
Bill Rigstad.....	Officer at Large.....	734-459-3374
Ken Wolf.....	Officer at Large.....	734-981-3423

STANDING COMMITTEE CHAIRS

Jule Ann Clough....	Library.....	248-977-4131
Dave McCagg.....	Newsletter Editor.....	734-482-6764
Dave McCagg.....	Membership.....	734-482-6764
Larry Last.....	Programs.....	248-207-9386
Bob Mills.....	Mentoring.....	248-535-6718
Ragnar Bergethon....	Web Site.....	248-608-8436
Fred Ball.....	Web Site Calendar.....	248-681-3108
Ron Ross.....	Toy Program.....	734-812-5531

Next MWG Luncheon: (Coordinated by Bill Rigstad)
Thursday, 18 NOV 2021 at 10:16 AM