



MICHIGAN WOODWORKER

michiganwoodworkersguild.com



Michigan Woodworkers' Guild (est. 1981) September 2022 Vol. 43 No. 8

When / Where:

SUNDAY, SEPTEMBER 11, 2022

(Socializing Starts at 1:00 PM, Business meeting Starts at 2:00 PM)

In-Person Meeting:

Jigs and Fixtures

Coordinated by: Jerry Romito



IN-PERSON MEETING AT:
Livonia Senior Center

SEPTEMBER:

Our 2:00 PM **September 11th** In-Person meeting will feature various **Jigs & Fixtures** developed by many MWG members. Contact **Jerry Romito** to showcase your Jig or Fixture

OCTOBER:

Ed Stuckey will demonstrate construction details, including types of wood, veneers, banding, and stringing, on a pair of recently-built **Thomas Seymour** Ladies' Work Tables at our 2:00 PM **October 9th** In-Person meeting. Come see and be amazed with Ed's exquisite woodworking.

NOVEMBER:

At our **2:00 PM November 13th** In-Person meeting, long time **MWG** member **Steve Lash** will comment about Benjamin Franklin's glass armonica, three (3) of Steve's most recent reproductions as well as a piece he is currently working on.



MWG THEATER FEATURE PRESENTATION:

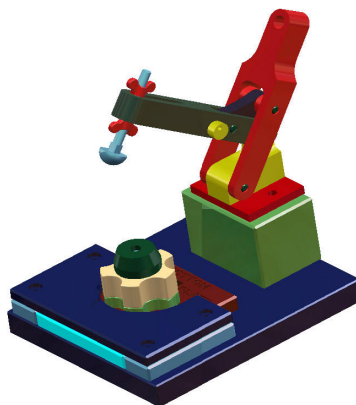
"Mastering Your Table saw" Learn the In and Outs of safely using your table saw.
Movie starts at 12:30 PM.

Jigs and Fixtures

By MWG Members

September 11th

This is our popular **Jigs and Fixtures** meeting coordinated by **Jerry Romito**. These fixtures are either purchased or shop made where the pros and cons of each are discussed by each demonstrator. There is always a good variety of jigs and fixtures which will inspire us to develop our own.





President's Corner

By Jerry Romito



September 2022

Let me update you on a few interesting things that have been going on since last month. The picnic was successful. You can read about that in this newsletter.

For the past several years our Board has talked about how to improve our visual aids at the monthly meetings, recognizing that the 55" TV that we borrow to use in Livonia is hard to see from a distance, and our own projector that we use in Royal Oak is quite outdated. Our solution was to purchase a new digital projector, a portable projector stand, and a 100" portable projector screen. Our laptop and camera can now be viewed directly through the projector onto the wide screen, and everything is portable so we can use it at both Livonia and Royal Oak. We think this will make a good difference for our aging eyes.

Another order of business is how to attract new members to the guild. To this end we have created a new tri-fold colored flyer and an **MWG** business card, both of which explain the benefits of membership. The intent is for current members to have these available to help explain our guild to prospective members. They will be available for pickup at our monthly meetings. We hope that you will help distribute them around town.

For another form of outreach, we were invited by **Chris Zalinski**, Manager of the **Rockler Novi** store, to participate in their special VIP two-hour evening event in August. For that they invited a hundred or so of their big-spending customers to have snacks, free raffles, sales, and three free demonstrations. **Ron Ross** and I attended. We were given a table in the front of the store next to the cash register, and I had the opportunity to speak directly to the

crowds at each of their demos. There may have been 60-80 attendees. It seemed like everyone of them stopped by our table – we never stopped talking. We handed out all of the new flyers that I brought and most of the business cards. We did not push them to join on the spot, so we'll have to see if the interest actually amounts to any new members.



For you competitive toy builders, remember that **Ron** and **Dan** are holding a toy build competition at the November meeting. See elsewhere in the newsletter for more information.

Finally, remember we have our annual Jigs & Fixtures meeting on **Sunday, September 11th** from 1:00 pm - 4:00 pm, live at the **Livonia Senior Center** (15218 Farmington Road, Livonia, MI 48154). This is always an anticipated event. We still need presenters who would like to bring and show off a home-made or purchased jig, fixture or tool (more than one is fine). It may be something that works well for you, or was a bust. Either way, the information could be useful to others. If you would like to present something, please send me an email at GJRomito@aol.com with the name(s) of your item(s).

Jerry Romito
MWG President

ODETTE FERGUSON
SALES REPRESENTATIVE
E-mail: odette@sawspec.com



"EXCLUSIVELY SAWS SINCE 1919"
10555 Shook Rd. P.O. Box 74438
Romulus, Michigan 48174-0438
www.sawspec.com

Your single source for all
your sawing needs...from
coolants to machinery

Voice
800-SAW-SPEC
800-729-7732
734-941-2824
Cell
734-740-1691
Fax
734-941-2883

Member of
Industrial Distributors Association
International Saw & Knife Association



**MWG
PICNIC
2022**

Membership

MWG 2022 Picnic Review

Well, we pulled it off and had a successful live event – our annual picnic at the VFW Park in Royal Oak.

This is **Jerry Romito** with a brief report, since **Dale Ausherman**, our regular review columnist was not able to attend. At least 42 members/guests enjoyed picnic-perfect weather. When I arrived around noon, I found that everything had already been set up by **Bill** and **Sally Rigstad**, **Ken** and **Connie Wolf**, **Ron** and **Lynn Ross**, and **Dave McCagg**.

Although the swap meet was supposed to start at noon, only a couple of items showed up. I was not surprised, since the tool give-away at our June meeting was such a huge success – apparently no one had anything left to sell or give away.

The abundance of food was served at 1:00 pm sharp. **Bill Gayde** as usual brought 88 pieces of his famous recipe fried chicken (Hollywood Market in Royal Oak). This was accompanied by dozens of pot-luck side dishes and desserts brought by the members with beverages brought by the **Rigstads**.



2022 MWG Picnic



2022 MWG Picnic

The two main door prizes had been purchased by **Ed Stuckey** from **Glenn Wing Tool** where the winning tickets were picked by Jerry's assistant **Fred Ball**.

The Big Horn 6" Engineers Square went to **Pat Fougousse**, and the Big Horn Digital Angle Caliper went to **Bill Gayde**. **Ragnar Bergethon** brought five (5) Tite-Bond glue spreaders that had been previously donated. The winners of these were **Ken Wolf**, **John Sanders**, **Clay Bolduc**, **Kevin Goulet**, and **Vince Choraszewski**.



2022 MWG Picnic



For the ladies present, winners of \$15 Target gift certificates were **Kathy Ball**, **Linda Romito**, **Cheryl Dolinski**, **Gloria Anderson**, and **Marcia Detter**.



2022 MWG Picnic

Bill Gayde made an announcement to point out that one of the members present, **John Sanders**, is one of the charter MWG Guild members from 1981, joining with **Tony Gigliotti** and **Steve Lash**, who were not present. That's 41 years and still counting.

As we always say, one of the benefits of guild membership is comradery, and this picnic was again a fine example of that. It was gratifying to see everyone mixing with friendly conversations throughout.

- Jerry Romito



2022 MWG Picnic



2022 MWG Picnic



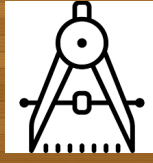
2022 MWG Picnic



2022 MWG Picnic



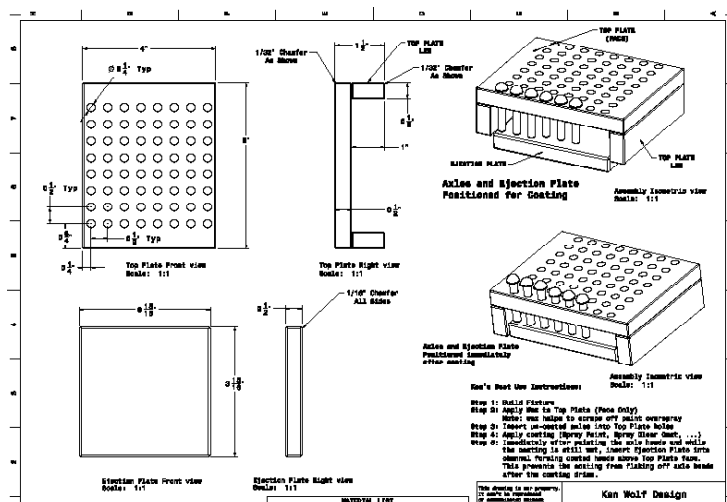
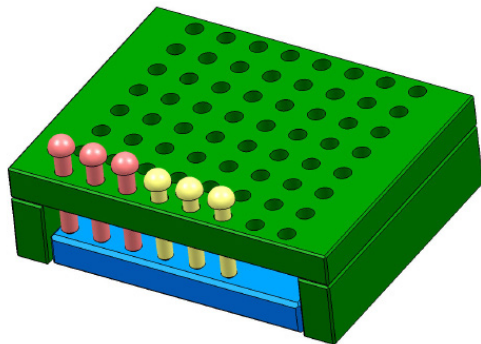
**MWG
DESIGN
CENTER**



From the Editor

In support of the MWG Toy Program, Ken Wolf has developed several jigs and fixtures to help in the easy construction of multiple toys. Primarily, Ken has constructed jigs to coat both axle heads as well as wheels.

Below is Ken's jig to coat axle heads. It has been initially designed in CAD from which detailed drawings were made followed by a physical sample. For a detailed drawing of this jig please see the MWG website at the bottom of this page.



Website for Axle Coating Jig:

https://michiganwoodworkersguild.com/wp-content/uploads/designs/Ken_Wolfs_Axle_Coating_Fixture_2-17-21.pdf

MARSH POWER TOOLS
SALES AND AUTHORIZED FACTORY SERVICE

20579 Middlebelt
Livonia, MI 48152
(248) 476-7744

7187 Grand River Ave.
Brighton, MI 48114
(810) 220-1122

Fax: (248) 476-1090

**GLENN WING
POWER TOOLS**

33656 Woodward Ave.
Birmingham, MI 48009
(248) 644-0444
(248) 644-5790 Fax
(800) 821-5177 (US)
(800) 448-1572 (MI)

Jeff Willmot

TREE-PURPOSED
CUSTOM WOODWORK & MILLING
Live Edge Slabs & Urban Lumber
Barn Wood & Salvaged Wood
Firewood

JASON COVIAN
Office (734) 751-6746
Cell (734) 658-2840
TREETOPURPOSED.COM

Michigan Naturals
DECORATIVE CABBET HARDWARE
www.MichiganNaturals.net

Ann Ivory
313-506-1963

ODETTE FERGUSON
SALES REPRESENTATIVE
E-mail: odette@sawspec.com



10555 Shook Rd. P.O. Box 74438
Romulus, Michigan 48174-0438
www.sawspec.com

Your single source for all
your sawing needs...from
coolants to machinery

Voice
800-SAW-SPEC
800-729-7732
734-941-2824
Cell
734-740-1691
Fax
734-941-2883

Member of
Industrial Distributors Association
International Saw & Knife Association



CHILDREN'S HOSPITAL MWG PROGRAM UPDATE



From Ron and Dan

The Toymakers Corner

Many of the newer members may not be aware how long the Guild has been involved with toy making projects. This month I am writing about the **Children's Hospital Snowpile** program and how did MWG get involved.

First off, the Children's Hospital Snowpile program is a patient and family centered care model of gift giving for children and teens who are hospitalized during the holiday season. Anxieties and stresses related to illness, separation from family and medical encounters can take quite a toll on children and families alike. Throw in recent events such as Covid 19 and you can easily understand how this could affect a patient's response to treatment. Whether battling a life-threatening illness, recuperating from surgery or just in for a routine check-up, children need to relax and be children. And that includes playtime.

Toys, games and the like help children engage their imagination as well as create a diversion during stressful times. The Children's Hospital staff within this Child Life program is trained to use developmental interventions and play to help not only the child patient but their families adjust to and understand the hospital and medical situation.

There are many recommended toys, both purchased through normal channels and handmade, that are donated on a regular basis. However, we must remember that



Ken Wolf Natural Finish Toys

our handmade toys must meet certain standards for safety and cleanliness. All these standards are well documented in our website.

The donated toys are distributed through the holiday season to child patients as gifts. Toys are also distributed to the many clinics and patient waiting rooms throughout the Hospital Complex as a means of engaging a child while waiting for treatment or to see a specialist.



Bill Damico Model Ts

Some toys are also given to siblings of a child patient. All this helps to reinforce the therapeutic function by bringing a sense of joy and normalcy to the life of a hospitalized child who may really need a reason to smile.

MWG has been involved in the Snowpile program for a lot longer than I have been a member. In the mid to late 1980's toys were donated from the Guild to the Salvation Army.



Bergs Delivery Truck

In 1988, under the organization of **Dave Wilson**, several hundred toys were donated to Children's Hospital, Utica Lion's Club and the Rochester Neighborhood House. By 1990, the program expanded even more under the organization of **Dave Wilson**, **Stu Falls** and **Tom Kearns**. That year toys were distributed to the Wellness House and Children's Leukemia Foundation along with the aforementioned organizations. Starting in 1991, **Tony Pieterzak** became involved with the toy program along with his brother **Richard**, members **Stu Falls**, **John Amiot**, and **Jim McCann**. These individuals organized the distribution to Toys for Tots, Capuchin Soup Kitchen and other charities.

During the mid 90's, Tony, through his leadership, was totally committed to the toy program and would



Vic Bonaro Trains

work long days to build toys to assure the guild had several hundred toys to deliver in early December. Despite Tony's efforts to get other members to build and donate toys he ended up producing a high percentage of the toys himself. Guild leaders became concerned that Tony was overworking himself so in 1997, members **Ken Wolf** and **Richard Boulard** were asked to assist in the production of toys and help share some of the program duties as well as contacts necessary to continue the program.

During the next few years more members became involved in building toys, with Tony leading a toy building team of about 5-7 members which greatly improved the ability to build more quality toys more efficiently. During this time, guidelines for toy builders were developed which improved toy quality, consistency of manufacture, and finish.

Ken eventually became the sole toy program leader helping to expand the program to include memory boxes and multi-purpose boxes which are still part of the program to this day. Ken has also maintained many demo toys, supplies and development of jigs to help in the production of toys.

Over the years MWG members have stepped up to help the hospital meet their needs/requests. These projects include bookshelves, picture frames, a pedal

airplane to transport children from one location to another and a toy sized MRI so that children could be comfortable when time

came to have an actual MRI performed. At different times MWG has assisted in hospital fund raising events (golf outings & shooting sports club events) where members manned a booth with guild toys and donated toys to silent auction events. Some of the donations were large elaborate toys that members donated to the auctions. Reportedly, a former Detroit Tiger's player bid \$1000 for one of our donated toys.

A very special achievement occurred in 2012 when the guild entered a Minwax nationwide contest for organizations that met a "Do Good with Wood" theme and our guild won first place in the nation. The prize included \$5000, a supply of their finishes, small mementos for guild attendees and a special presentation to our guild by a Minwax VP. This award was largely based on our support of the hospital and MITES.

About 2017 Ken expressed that it was time for the toy program to be passed on to other members for leadership. **Ron Ross** agreed to become toy chair with the assistance of **Dan Holowicki**. Ken guided the program

for a couple years as these two learned the ropes, yet his expertise and insight is still drawn on to this day. The hope is for the toy program to continue to thrive, getting involvement from additional members and continue to provide the hospital with 400+ toys and boxes every year.

It is now September and we have but three months to continue to honor our commitment to Children's' Hospital Snowpile program. If you have made toys in the past and plan on doing so this year we thank you. If you have thought it might be an easy project to put together, yes it can. Please check out the toy program on our updated website for more inspiration. Just remember to keep your design simple, round over all edges, no metal parts and a smooth finish to



Bill Damico Cars



Vic Bonaro Rolls Royces



aid in cleanliness and sanitation.

As has always been the policy, the Guild will provide wheels (1", 1 1/4" or 1 1/2" dia), nylon washers and wheel pegs free of charge to any member who wishes to make toys for this program. The Guild also has an inventory of non-standard wheels and other toy parts that have been recently categorized. While we do have a limited supply and do not plan to stock these once the current supply runs out, we currently have;

- 1 3/4", 2", 2 1/4", 2 1/2", 2 3/4" and 3" diameter standard style wheels
- 1", 1 1/4", 1 1/2", 2 1/4", 2 1/2" and 2 3/4" diameter grooved tire style wheels
- 2" and 2 3/4" diameter wagon style wheels
- 1 1/4", 1 1/2" and 2 1/4" diameter flanged style train wheels
- Wood shapes such as acorns, beads, balls, caps and discs
- Large and small shaker style pegs
- Three sizes of wood peg people
- Steam engine/steam train smokestacks
- Various small pieces of poplar, suitable for glue-up

If you need these items, they can be obtained by contacting Ron or Dan. This is the one program MWG does annually to benefit those children who really, really need a reason to smile. Please make every effort to support this Guild program. Why not make use of your extra shop time this year to create a small gift that can bring a smile to a child who would love to have a moment and forget about their reason for being in the hospital.

Thank you for your support.
Dan Holowicki & Ron Ross

For further information or to arrange to drop off toys, please contact

Ron - 734- 812-5531 - rross1508@gmail.com

Dan - 313-702-5836 - dan56laura@att.net



**MWG FIRST
ANNUAL
TOYMAKING
CONTEST**



From Ron and Dan

Toymakers,

Here's your chance to showcase your skills at designing and building toys, showing off your world class painting skills or perhaps use that special piece of burl or quartersawn chunk of prime wood you have been saving with a beautiful clear finish. Of course, all the normal rules for toymaking apply to this contest, no metal parts, no sharp or pointed edges and only approved glues and finishes.

The three categories will be;

- 1. Best overall design**
- 2. Best painted finish**
- 3. Best clear (stained/varnished) finish**

During the social hour prior to our live November meeting, we will be accepting only one toy for each maker; the judge's decision will be final and the winners in each category will be awarded a \$25 gift certificate from Woodcraft along with bragging rights as the winner of our first annual toy contest. After the judging and awarding of prizes, the entered toys will be retained and included in the donation to the Children's Hospital for the Snowpile Program.

We are hoping that all our 'regular' toymakers and perhaps some new makers will participate. If all goes well this year, we will continue next year and expand to include boxes and the like.

Thank you for your support.
Ron Ross & Dan Holowicki



NEW

\$99⁹⁹

**ROCK-STEADY FOLDING
WORKTOP WALL BRACKETS**

SKU: 58798



**SPECIAL
BUYS!**

\$11⁹⁹ BD. FT.

BELI LUMBER SKU: 62149
IN-STORE ONLY, WHILE SUPPLIES LAST

\$3⁹⁹ BD. FT.

RUSTIC HICKORY LUMBER
SKU: 80399 IN-STORE ONLY,
WHILE SUPPLIES LAST

**STARTING AT
\$7⁹⁹ EA.**

WENGE LUMBER



\$29⁹⁹

**QUICK-DRAW
MARKING GAUGE**

- One quick motion lays down
a nice, bold pencil line

SKU: 55120



\$2⁴⁹

**BENCH COOKIE®
PLUS WORK GRIPPER, SINGLE**

Reg. \$3.49 SKU: 59655



**SAVE OVER
25%**

ROCKLER

CREATE WITH CONFIDENCE

UPGRADE YOUR SHOP SALE PRICING VALID 9/2-9/29/2022

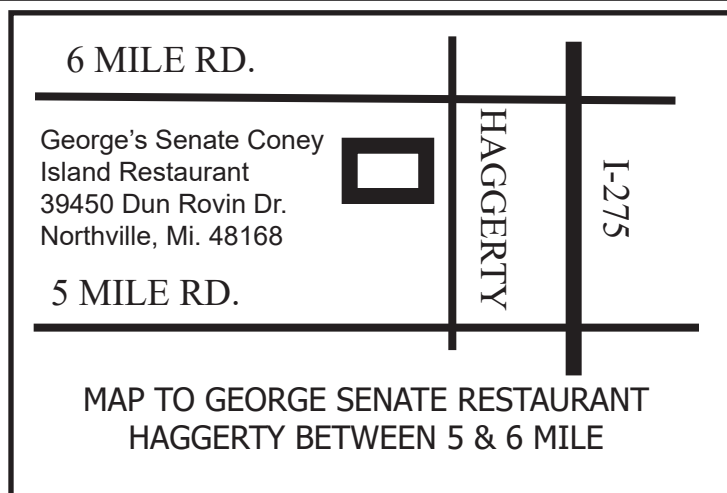
26160 Ingersol Drive • Novi, MI 48375 • (248) 543-5110 • Rockler.com

Please check Rockler.com for current store hours.

**For membership information contact
Dave McCagg at: d2mccagg@provide.net
For name tags, sign up with Ed Stuckey at a
regular meeting.**

Executive Board Members / Committee Chairs

Jerry Romito.....	President.....	248-475-5976
Will Wilson.....	Vice President.....	248-207-8883
Ed Stuckey.....	Treasurer.....	313-345-3671
Don Hess.....	Secretary.....	734-207-8427
Dan Holowicki.....	Officer at Large.....	734-283-9898
Tony Gigliotti	Officer at Large	248-853-8349
Bill Gayde	Officer at Large	248-859-3949
Ron Ross.....	Officer at Large.....	734-812-5531
Rich Herbert.....	Officer at Large.....	248-628-0644
Ragnar Bergethon...	Officer at Large.....	248-608-8436
Bill Rigstad.....	Officer at Large.....	734-459-3374
Ken Wolf.....	Officer at Large.....	734-981-3423
Dave McCagg.....	Officer at Large.....	734-482-6764
Tim Kolassa	Library	248-765-3758
Dave McCagg.....	Newsletter Editor.....	734-482-6764
Dave McCagg.....	Membership.....	734-482-6764
Larry Last..	Programs/Website Calendar....	248-207-9386
Bob Mills.....	Mentoring.....	248-535-6718
Kevin Goulet	Camera Chair	248-672-5341
Fred Ball....	Web Site Calendar (Backup).....	248-681-3108
Ron Ross.....	Toy Program.....	734-812-5531



Next MWG Luncheon: (Coordinated by Bill Rigstad)
Thursday, 22 September 2022 at 10:16 AM