



# MICHIGAN WOODWORKER

michiganwoodworkersguild.com



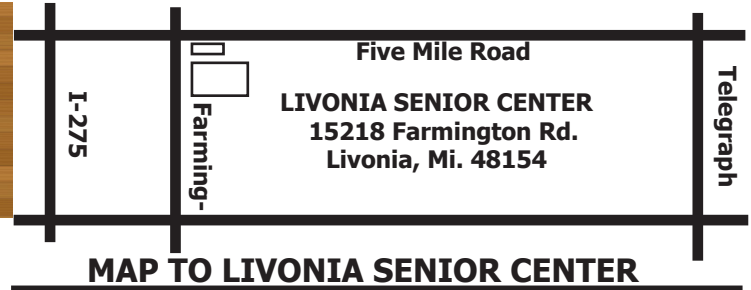
Michigan Woodworkers' Guild (est. 1981) September 2023 Vol. 44 No. 9

## When / Where:

**SUNDAY, SEPTEMBER 10, 2023**

(Socializing Starts at 1:00 PM , Business meeting Starts at 2:00 PM)

Livonia Senior Center, Livonia, MI



## In-Person Meeting:

### Showcase of Skills

by Various MWG Members

Meeting Coordinated by: Jerry Romito



**IN-PERSON MEETING AT:**  
**Livonia Senior Center**

## SEPTEMBER:

Join us at our **2:00 PM September 10<sup>th</sup> 2023** meeting, coordinated by **Jerry Romito**, which features our annual "**Showcase of Skills**" where MWG members' projects shine.

## OCTOBER:

Coordinated by **Ken Wolf**, acclaimed artisan, **Dan Reahard** will showcase his hand carving skills during the **2:00 PM MWG October 2023** Member Meeting at the **Livonia Senior Center**. Dan's work is truly inspirational.

## November:

Our **2:00 PM November 12<sup>th</sup> 2023** In-Person meeting will feature various **Jigs & Fixtures** developed by many MWG members. Please contact **Jerry Romito** to showcase your special Jig or Fixture. Remember that November is toy day and also the election of officers.

## Showcase of Skills

# September 10<sup>th</sup>

Our September In-Person meeting will feature the guild's annual "**Showcase of Skills**".

Coordinated by **Jerry Romito**, this meeting will feature a wealth of members displaying their noteworthy projects.



## Labor Day



## President's Corner

By Jerry Romito



September 2023

### Circle Pines Center

You might remember that in June I sent a note about Circle Pines Center near Hastings, Michigan. I had been told about this by Fred Wood, a friend of long-time MWG member Tom Kearns. Fred said "Tom wished that Circle Pines Center would get into a sawmill operation. Well, now that has happened. And Tom would have enthusiastically brought this resource to Guild members. So here I am in his place, touting a rather unique direct source of fine woodworking lumber." Member Jim Kudej responded that his farm is about 15 miles from the Center, and that he would pay it a visit. Well last month Jim did just that, and here is his report:

*I visited Circle Pines Center two weeks ago. The center is only a short drive from my farm. I got an excellent tour of the sawmill operation by **Gary McClelland** and **Andy Bodenbender**. The mill is a bandsaw mill mounted on two ground rails. Logs are manually*



Circle Pines Center - Live Edge

*loaded on the rails and the powerhead is manually pushed the length of the log; basic but very functional. They primarily slab the logs with the live edge but also mill some dimensional lumber. They have a solar kiln they constructed to dry the wood. Again, basic but functional. Gary describes their planks as, "the kind of stuff that would interest an artisanal*

*woodworker". I've attached some pictures of some of the wood they currently have. One picture is of some very nice spalted maple. They also have some black*

*cherry, oak, hickory, and black walnut.*

*The Center is a very interesting place and is a CO-OP located on about 300 acres of forested land and includes some shoreline on an adjacent lake. They have a variety of activities throughout the year that might be of interest to some members.*

<https://circlepinescenter.org/>



Circle Pine Center

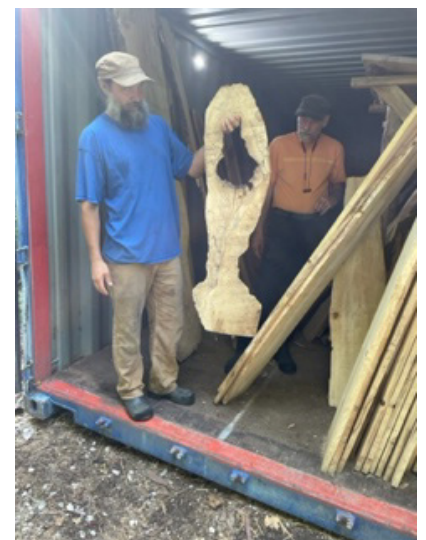


Circle Pine Center - Stacks

*The sawmill operation is not a commercial business but rather an operation to use the resources of the trees on the 300 acres to help fund some of the activities at the Center. If any members are interested in purchasing some of the lumber or visiting the operation, they can contact **Gary***

**McClelland at 847 372-9794.** If they let Gary know what they are interested in, he is willing to send pictures of what he has available.

The Circle Pines Center is located at 8650 Mullen Rd, Delton, Mi. 49046. As a reference it is about a 2 ½ hour drive from my home in Livonia.



Circle Pine Center - Wood

### 2023 MWG Picnic





The August picnic was a big success and enjoyed by the 50-or-so who attended. I thank those of you who were able to attend for your presence and camaraderie. There were a number of new members there who appreciated the opportunity to meet with long-standing members.

I especially want to thank Ken Wolf, Ron Ross, Bill Gayde, Ed Stuckey, Fred Ball, Bob Mills, and their wives, along with Dave McCagg, Kevin Goulet, and Larry Last for their invaluable help to bring supplies, set up the tables, and clean up afterward. The swap meet did its job, and there was plenty of food to go around. Ed brought some nice prizes, as usual.

### Showcase of Skills Meeting

Our next monthly meeting is the annual Showcase of Skills meeting on Sunday September 10, at 1:00 pm at the Livonia Senior Center. This is often regarded as our most interesting meeting, where members, from beginners to experts, have the opportunity to present their projects for all to see. For planning purposes please let me know if you want to present, along with a title of each project. If a project is too large to transport, you can send me photographs at GJRomito@aol.com, and I will compile them into a PowerPoint slide show for the meeting.

Jerry Romito



## MEETING REVIEW



**By Dale Ausherman**

Ace MWG reporter, Dale Ausherman, is resting his quill this month.

Look for Dale's outstanding report in next month's newsletter.



## MWG MEMBER NEWS



### Steve Lash Wins Award

Our long-time MWG member **Steve Lash** was proud to announce that he has won yet another prestigious award. This one is Top Prize in the Furniture category for a ladies desk entered in the Woodworking Networks Veneer Tech Craftsman's Challenge. The December issue of SAPFM's *American Period Furniture* magazine will feature a lengthy article about the design and construction of the ladies desk. Here is a review of his project from the Woodworking Network's website:

*Styled after a piece that was probably made for one of Marie Antoinette's palaces, the "Marquetry of Cubes Ladies Desk" by Steven Lash is a masterpiece of subtle complexity in classical lines. Wood species used include Honduras mahogany, beech, holly, ebony, and amboyna.*

*"I believe the beauty of the desk is the simplicity of the marquetry of cubes and the contrasting colors of the veneer inserts," said Lash, who is an adjunct clinical professor at the University of Michigan School of Dentistry when he is not crafting spectacular furniture. "I believe the crowning design element in the desk was the placement of the rows of 1/8-inch by 15/16-inch mahogany veneer cubes in an alternative grain*



Marquetry of Cubes Ladies Desk  
by Steve Lash



Marquetry of Cubes Ladies Desk  
by Steve Lash

*direction that gives the surfaces of the desk a unique appearance and enhances its charm."*

**Said judge Marc Adams, "Your eye for detail is apparent, and your workmanship is impeccable."**

*In addition to the prize for the top Furniture category, Lash also won for being a first-time entrant.*

You will be able to see Steve's desk at the September 10<sup>th</sup> Showcase of Skills meeting at the LSC.

Jerry Romito  
(Photos by Timothy Thayer)

**ODETTE FERGUSON**  
SALES REPRESENTATIVE  
E-mail: [odette@sawspec.com](mailto:odette@sawspec.com)



10555 Shook Rd. P.O. Box 74438  
Romulus, Michigan 48174-0438  
[www.sawspec.com](http://www.sawspec.com)

Your single source for all  
your sawing needs...from  
coolants to machinery

Voice  
800-SAW-SPEC  
800-729-7732  
734-941-2824  
Cell  
734-740-1691  
Fax  
734-941-2883

Member of  
Industrial Distributors Association  
International Saw & Knife Association

**CUSTOM WOODWORK & MILLING**  
Live Edge Slabs & Urban Lumber  
Barn Wood & Salvaged Wood  
Firewood

**JASON COVIAN**  
Office (734) 751-6746  
Cell (734) 658-2840  
[TREETURPOSED.COM](http://TREETURPOSED.COM)



- **Why do banks hate woodworkers?** Because all they ever want to do is open up a "shavings account".
- **I picked up a book on woodworking.** Just need to carve out some time to read it.
- **Do you know why woodworkers always get so mixed up at the airport?** Because they can never find the right plane.

These phrases are provided purely for your humorous enjoyment. Feel free to send your favorite woodworking pun to the MWG Newsletter Editor for possible future publication.

**GLENN WING**  
POWER TOOLS

33656 Woodward Ave.  
Birmingham, MI 48009  
(248) 644-0444  
(248) 644-5790 Fax  
(800) 821-5177 (US)  
(800) 448-1572 (MI)

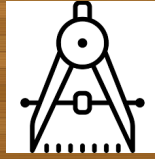
Jeff Willmot

**MARSH POWER TOOLS**  
SALES AND AUTHORIZED FACTORY SERVICE

20579 Middlebelt  
Livonia, MI 48152  
(248) 476-7744

7187 Grand River Ave.  
Brighton, MI 48114  
(810) 220-1122

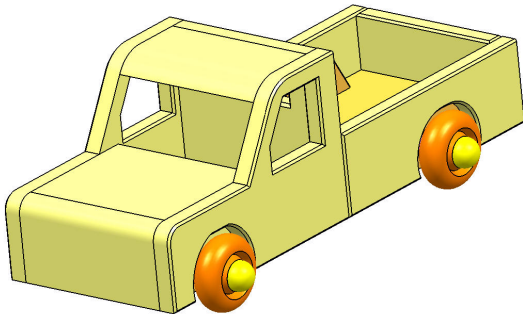
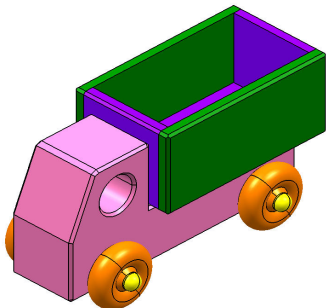
Fax: (248) 476-1090

**MWG  
DESIGN  
CENTER****From the Editor**

In support of the MWG Toy program, the design staff has been steadfastly at work developing new designs. The latest are a toy pickup truck (F-150) and a dump truck.

Drawings for these new toy projects can be found on our website at the links shown below. Be the first on your block to make them.

Everyone is encouraged to make these new projects and then send your feedback to the MWG Newsletter Editor.

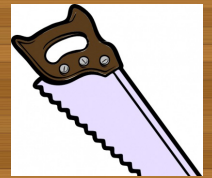
**MWG Pickup Truck (F-150)****MWG Dump Truck**

You can find the MWG **Dump Truck** plans on the MWG website with the following link:

[https://michiganwoodworkersguild.com/wp-content/uploads/toys/MWG\\_Dump\\_Truck\\_12-29-22.pdf](https://michiganwoodworkersguild.com/wp-content/uploads/toys/MWG_Dump_Truck_12-29-22.pdf)

You can find the MWG **Pickup Truck** plans on the MWG website with the following link:

[https://michiganwoodworkersguild.com/wp-content/uploads/designs/F-150\\_Pickup\\_Assembly\\_4-22-23.pdf](https://michiganwoodworkersguild.com/wp-content/uploads/designs/F-150_Pickup_Assembly_4-22-23.pdf)

**WOODWORK  
NOTES****MWG Apparel Availability**

After a hiatus following Covid, we are again offering Michigan Woodworkers' Guild clothing apparel including different types of shirts and a baseball cap. The items include the embroidered MWG logo and a map of the state.

Available are Denim long sleeve shirts in either light or dark blue. We also have Poplin shirts in long or short sleeves in various colors and we can get polo type shirts.

The cost of a shirt is \$30 and includes the logo, you can also include your name on a shirt for an extra cost of \$5. Baseball style caps as shown in the picture are \$16 which includes the MWG logo.

There are benefits to having a MWG shirt such as showing your pride in being part of a wonderful group of woodworkers and if you have your name on the shirt, you still get 2 raffle tickets per dollar even if you forget your official MWG name tag.

For more information, please see **Ron Ross** at any meeting or at: [ross1508@gmail.com](mailto:ross1508@gmail.com).

**MWG Cap**



**CHILDREN'S  
HOSPITAL  
MWG PROGRAM  
UPDATE****From Ron and Dan**

News from the Toy and Box Committee

**Box Building**

September already? You have got to be kidding! When you read this we will have approximately 3 months till we deliver our toys and boxes to Children's Hospital for their Snowpile Program. I really hope with your help we will be able to meet our goal of 400 toys for the year.

My main focus for the last ten years has been toy making, specifically cars and trucks. However, there continues to be a need for boxes, both the plain and more elaborate memory boxes. The plain or simple boxes children use every day to keep their supplies and other items in one place so they can be easily retrieved and taken from location to location. Of course the memory boxes are for the families of children that did not survive their affliction, an unfortunate reality. On the subject of the memory type boxes, the August 2023 issue of Popular Woodworking contains an article by Kenan Orhan about building a veneered and



**Vic Bonaro Trains**

dovetailed box with lid that slip fits onto the box. The box measures approximately 9"x5"x4", which would be about the size of a small shoe box. The article is well written, with numerous pictures and a detailed drawing and cut list. The box itself is just 4 sides of hardwood with dovetailed corner joints. The lid of the box is a piece of material approximately 5/16" thick with a fancy veneer face. The bottom of the box is also a piece of material approximately 5/16"



**Bill Damico Model Ts**

thick. The top and bottom of the box is held in place by grooves in the box sides. The top and bottom would be placed within the grooves before glue-up. After the glue has dried, the box is cut open using a Japanese pull saw registered with a stop block. Afterwards, pieces of wood about 1/4" thick are laminated inside the box bottom half, that extend upwards to hold the lid in place. Simple enough to make and elegant. Without trying to give away all the information to build such a box, I will say it could easily be modified to different sizes and hardwood plywood could easily be substituted for the top and bottom. Hardwood would be best for the sides as well as the inner liner pieces of wood. Of course an approved finish that would highlight the grain of the hardwood pieces would be my recommendation for a topcoat. If this short summary of building a box with dovetailed corners has you thinking 'I could do that', my suggestion would be to run out and get your copy of the August 2023 issue of Popular Woodworking. My goal for this year will be to try to make a couple of these for the Hospital program.

I personally think this type of box could also be adapt-

**Ken Wolf Natural Finish Toys**

and a sliding lid or variation of the slip fit lid could also be done. Mitered joints that may have thin strips of contrasting wood glued into slots cut in the corners could also be done easily. Hardwood dowels can also be used to reinforce the mitered corners. If one were to decide to make several dovetail joinery boxes at one time, it may be worth using a router and dovetail jig to cut the joints. If only making a couple boxes with dovetail joints, either plain or memory style boxes, it would more than likely be quicker to cut them by hand.

So as I personally delve into the world of box making, expect to see more tips and suggestions.

As I have mentioned the previous couple of articles, we will once again be sponsoring a Toy and Box Contest this year. The rules will pretty much follow last year's rules. During the social hour prior to our live November meeting, we will be accepting your best toys for competition. A group of distinguished judges, picked/volunteered from the MWG, will peruse the entrants and pick the winners. We will accept only one toy and/or box from each maker; the judge's de-

ed to the plain box category. Many of the plain boxes members have made in the past typically have mitered corners and a sliding lid. However, even grained white pine with dovetailed corners

cisions will be final. In the interest of remaining impartial, if you submit a toy or box you will not be able to judge. The winners in each category will be awarded a \$25 gift certificate from Rockler. After the judging and awarding of prizes, the toys and boxes will be retained and included in the donation to the Children's Hospital for the Snowpile Program. The winning categories will be:

- Toys - Best overall design
- Toys - Best painted finish
- Toys - Best clear (stained/varnished) finish
- Boxes – Best overall design
- Boxes – Best clear (stained/varnished) finish

Here's your chance to showcase your skills at designing and building boxes and toys, showing off your world class painting skills and perhaps using that

**Bill Damico Prototype Tow Truck**

special piece of burl or quarter sawn chunk you have been saving with a beautiful clear finish.

In planning your toy or box making projects, please remember to follow the guidelines listed in our website. With so many government regulations coming forward we have to be very careful that toys and boxes conform to the appropriate standards. Within the Toy Project section under the Programs/Resources tab, click on the link "Toy Guidelines for Children's Hospital" for more specific requirements.

As mentioned the previous couple months, we are now stocking a new item on a trial basis. We have treaded 1", 1 1/4" and 1 1/2" wheels to enhance your toy making designs. They are about 40% wider than standard wheels with a more realistic look. Although these are quite a bit more expensive than standard wheels, they do give that little bit of extra oomph to your vehicles. And they use the standard 1/4" dia wheel pegs and washers that the Guild supplies.

**Vic Bonaro Ford Roadsters**



As has always been the policy, the Guild will provide standard wheels (1", 1 1/4" or 1 1/2" dia) along with the new treaded wheels, 1/2" OD nylon washers and 1/4" dia. wheel pegs free of charge to any member who wishes to make toys for this program. We do have a fair supply of the treaded wheels at this time and should they be a big hit, we will arrange to have more in the years to come. Any of these items can be obtained by contacting Ron or Dan

The Guild still has an inventory of non-standard wheels and other toy parts that have been recently categorized. There has been a good response to these non-standard items and once they are gone, they will not be replaced:

- 1 3/4", 2", 2 1/4", 2 1/2", 2 3/4" and 3" diameter standard style wheels
- 2", 2 1/4", 2 1/2" and 2 3/4" diameter treaded tire style wheels
- 2" and 2 3/4" diameter wagon style wheels
- 1 1/4", 1 1/2" and 2 1/4" diameter flanged style train wheels
- Wood shapes such as acorns, beads, balls, caps and discs
- Large and small shaker style pegs
- Three sizes of wood peg people
- Steam engine/steam train parts and smokestacks
- Various small pieces of poplar, suitable for glue-up

We do bring a small amount of select items from this stockpile to Guild meetings on a regular basis. However, if you have a specific need, please contact Ron or Dan for the amount and to arrange delivery.

We will continue to set a goal of delivering 400 toys to Children's Hospital for the Christmas Snowpile program. This program is only a part of the toy distribution. Throughout the year a fair amount of simpler toys are distributed to all the clinics within the Children's Hospital Complex. These toys are used by the children in the waiting rooms as they wait to see a specialist or treatment. Some toys are passed out to siblings of child patients when they come to visit. Other toys stay with the children when they are



**Bergs Delivery Truck**

released from the hospital. The hospital also has a need for boxes, both plain ones, which the children can use for activities during their hospital stay and somewhat fancier boxes, usually made with hardwoods and more intricate joinery, which are presented to family members of children who did not survive their afflictions. The hospital does like boxes that are about the size of a shoebox. Also the picture frames on top of the memory boxes are well liked by the hospital staff, but not necessary.

Once again, thanking all of you toy and box makers for your support along with the Guild's board for allowing funding to purchase wheels to distribute free of charge to all the makers. Happy Toy and Box making.

For further information on our toy/box program, request wheels and axles or to arrange to drop off toys or boxes, please contact

**Ron** - 734- 812-5531 - [rross1508@gmail.com](mailto:rross1508@gmail.com)

**Dan** - 313-702-5836 - [dan56laura@att.net](mailto:dan56laura@att.net)







HAVE YOU  
SEEN THIS?

**\$7.99**

### 3" POCKET RULE

Compact enough to fit in your pocket, sturdy 1mm thick stainless steel resists bending

Reg. \$9.99 SKU: 68157



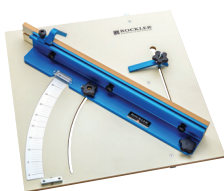
SAVE  
20%

**\$151.99**

### TABLESAW CROSSCUT SLED

Easy-to-read 1/2° graduations and a hair-line indicator ensure error-free setups

Reg. \$189.99 SKU: 33113



NEW



### SADDLE SQUARES

Quickly draw accurate lines

- A 1:6 DOVETAIL** Reg. \$14.99 SKU: 66582
- B 1:8 DOVETAIL** Reg. \$14.99 SKU: 64744
- C 90°** Reg. \$14.99 SKU: 68368
- D 45°** Reg. \$14.99 SKU: 69816



**ROCKLER®**

We've Moved! 43291 Crescent Blvd. • Novi, MI 48375 • (248) 543-5110 • Rockler.com

Please see Rockler.com for updates.

UPGRADE YOUR SHOP SALE PRICING VALID 8/31-9/27/2023

For membership information contact

Dave McCagg at: d2mccagg@provide.net

For name tags, sign up with Ed Stuckey at a regular meeting.

Executive Board Members / Committee Chairs

Jerry Romito.....	President.....	248-475-5976
Dan Holowicki.....	Vice President.....	734-283-9898
Ed Stuckey.....	Treasurer.....	313-345-3671
Don Hess.....	Secretary.....	734-207-8427
Dan Holowicki.....	Officer at Large.....	734-283-9898
Tony Gigliotti .....	Officer at Large .....	248-853-8349
Bill Gayde .....	Officer at Large .....	248-859-3949
Ron Ross.....	Officer at Large.....	734-812-5531
Rich Herbert.....	Officer at Large.....	248-628-0644
Ragnar Bergethon...	Officer at Large.....	248-608-8436
Ken Wolf.....	Officer at Large.....	734-981-3423
Dave McCagg.....	Officer at Large.....	734-482-6764
Ragnar Bergethon..	Website .....	248-608-8436
Dave McCagg.....	Newsletter Editor.....	734-482-6764
Dave McCagg.....	Membership.....	734-482-6764
Larry Last..	Programs/Website Calendar....	248-207-9386
Bob Mills.....	Mentoring.....	248-535-6718
Kevin Guolet .....	Camera Chair .....	248-672-5341
Fred Ball....	Web Site Calendar (Backup).....	248-681-3108
Ron Ross.....	Toy Program.....	734-812-5531
Kevin Guolet.....	Officer at Large.....	248-672-5341
Kevin Guolet.....	Food Coordinator.....	248-672-5341

6 MILE RD.

George's Senate Coney  
Island Restaurant  
39450 Dun Rovin Dr.  
Northville, Mi. 48168

5 MILE RD.

HAGGERTY

I-275

MAP TO GEORGE SENATE RESTAURANT  
HAGGERTY BETWEEN 5 & 6 MILE

Next MWG Luncheon: (Coordinated by TBD)

**Thursday, 28 SEPTEMBER 2023 at 10:16 AM**